



The Circle

Queen Elizabeth Street, SE1

£1,900 per month
(£438.46 per week)

A 1 bedroom apartment situated within this prestigious development on Queen Elizabeth Street. The property boasts a bright reception room, separate kitchen and a private balcony.



The Circle

Queen Elizabeth Street, SE1

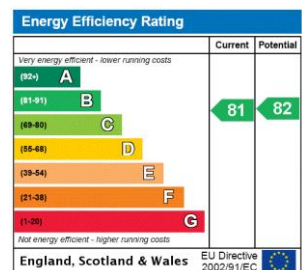
- Excellent Shad Thames Location
- One Bedroom Apartment
- 24 Hour Concierge
- Private Balcony



ZERO DEPOSIT SCHEME AVAILABLE. A 1 bedroom apartment situated within this Iconic development in Shad Thames. The development benefits from a 24 hour porter and the apartment comprises, bright reception room, double bedroom, kitchen, bathroom and private balcony.

Shad Thames is a unique area steeped in history and character situated along the south side of the River Thames. The area is home to London's most iconic landmark, Tower Bridge and is within the vicinity of many attractions such as The Shard, Tate Modern and Tower of London. Shad Thames boasts a variety of bars and restaurants and is a short walk to the delights of Bermondsey Street, Maltby Street & Borough markets. Although The City is within walking distance the area is well connected with excellent transport links via London Bridge & Tower Hill stations as well as the river taxi.

Minimum Term: months
Deposit Required: £2,192.31
Local Authority: Southwark Council
Council Tax Band: E
EPC Rating: C
Furnished, Part Furnished, Unfurnished



Chestertons Tower Bridge Lettings

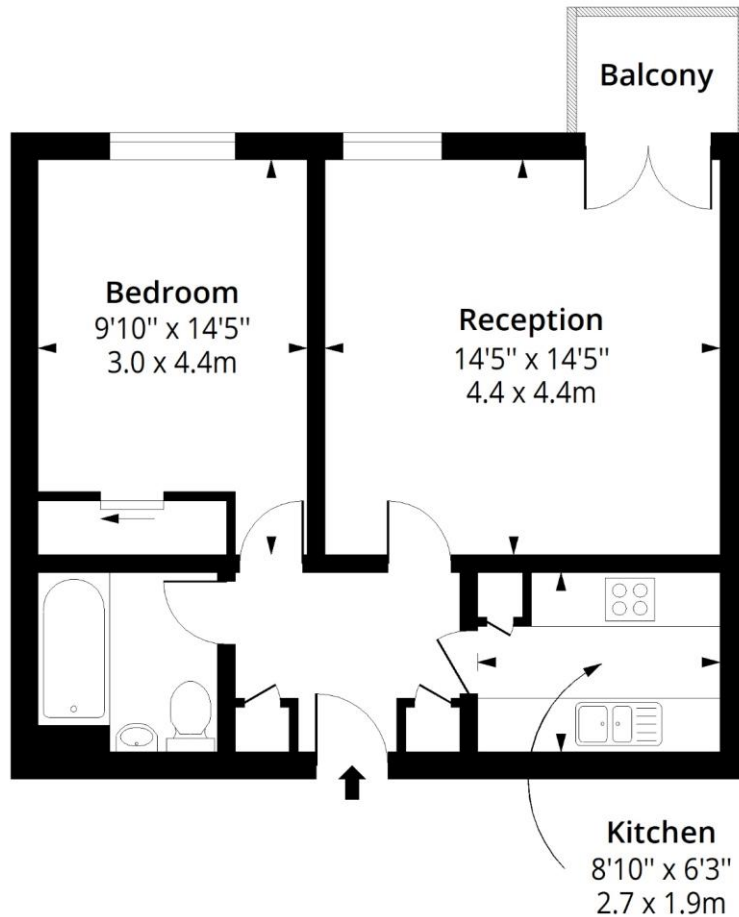
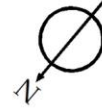
220 Tower Bridge Road
 Tower Bridge
 London
 SE1 2UP
 towerbridge@chestertons.co.uk
 02073576911
 chestertons.co.uk

Additional tenant charges apply (fees apply to non-AST tenancies only)
 Tenancy Agreement Fee: £300
 References per Tenant/Guarantor: £60
 Inventory check (approx. £100 – £250 inc. VAT)
 chestertons.co.uk/property-to-rent/applicable-fees

The Circle, Queen Elizabeth Street, SE1

Approx. Gross Internal Area 540 Sq Ft - 50.17 Sq M

Approx. Gross Balcony Area 27 Sq Ft - 2.51 Sq M



Second Floor

Floor Area 540 Sq Ft - 50.17 Sq M



Measured according to RICS IPMS2. Floor plan is for illustrative purposes only and is not to scale. Every attempt has been made to ensure the accuracy of the floor plan shown, however all measurements, fixtures, fittings and data shown are an approximate interpretation for illustrative purposes only. 1 sq m = 10.76 sq feet.

lpaplus.com

Date: 23/11/2023

