



PERFECT PILLARS
Supporting You



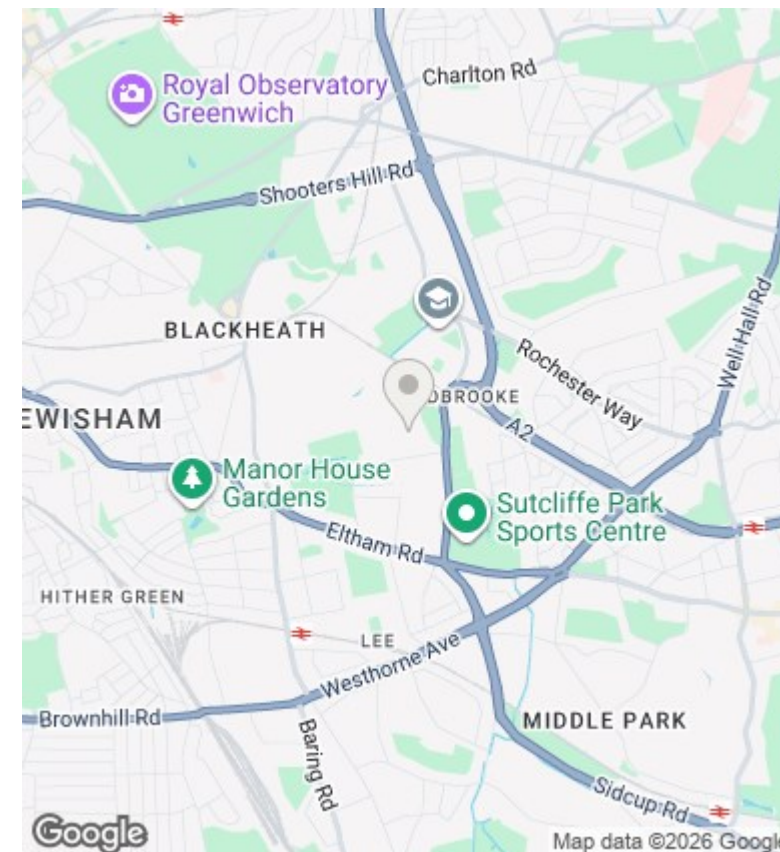
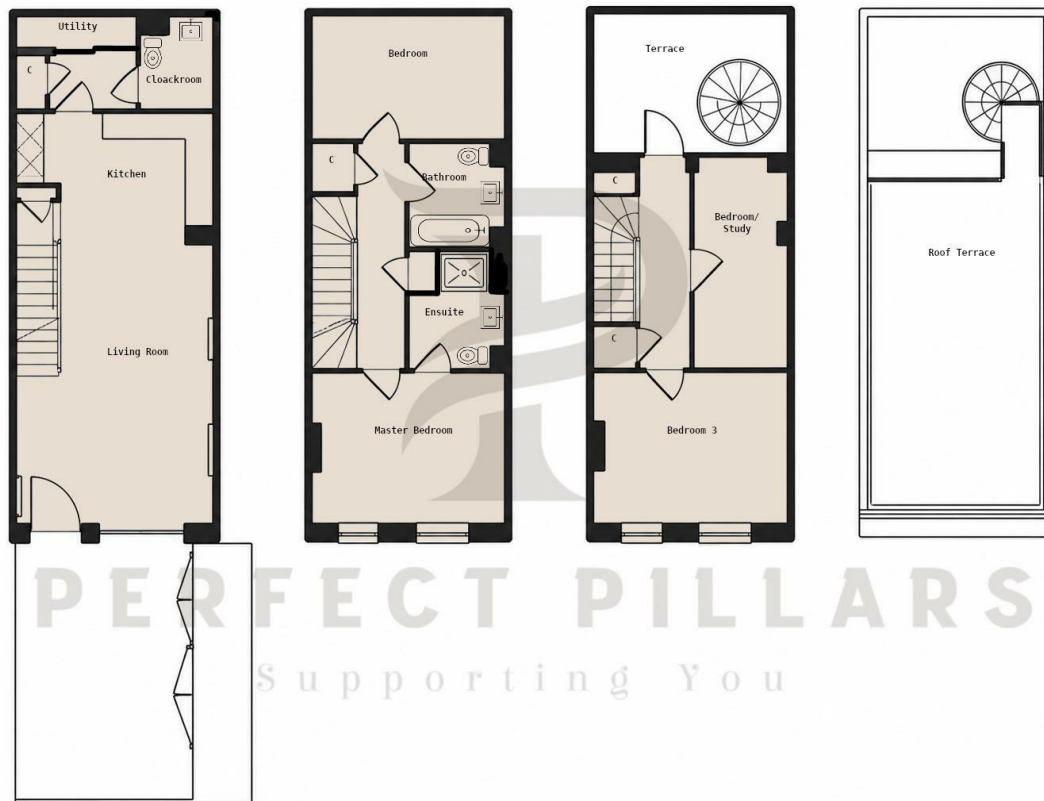
12 Baldwin Lane, London, SE3 9AY

Asking price £950,000

- Four-bedroom freehold townhouse in Kidbrooke Village
- Two bathrooms plus ground floor cloakroom/WC
- Private terrace and generous roof terrace
- Close to Kidbrooke Station, Pegler Square, Cator Park, Sutcliffe Park, Blackheath and Greenwich
- Arranged across multiple floors
- Principal bedroom with en suite shower room
- Private driveway parking
- Bright open-plan living/dining room with modern kitchen
- Fourth bedroom suitable as study/home office
- EPC rating B

400 Thames Valley Park Drive, Reading, Berkshire, RG6 1PT
01183 048821

info@perfectpillars.co.uk
<https://www.perfectpillars.co.uk/>



Directions

Viewings

Viewings by arrangement only. Call 01183 048821 to make an appointment.

Council Tax Band

F

EPC Rating:

B

Energy Efficiency Rating		Current	Potential
<i>Very energy efficient - lower running costs</i>			
(92 plus) A			96
(81-91) B		88	
(69-80) C			
(55-68) D			
(39-54) E			
(21-38) F			
(1-20) G			
<i>Not energy efficient - higher running costs</i>			
England & Wales		EU Directive 2002/91/EC	