

Helena Crescent, Fairfield, Hitchin, SG5 4SA

Offers Over £650,000

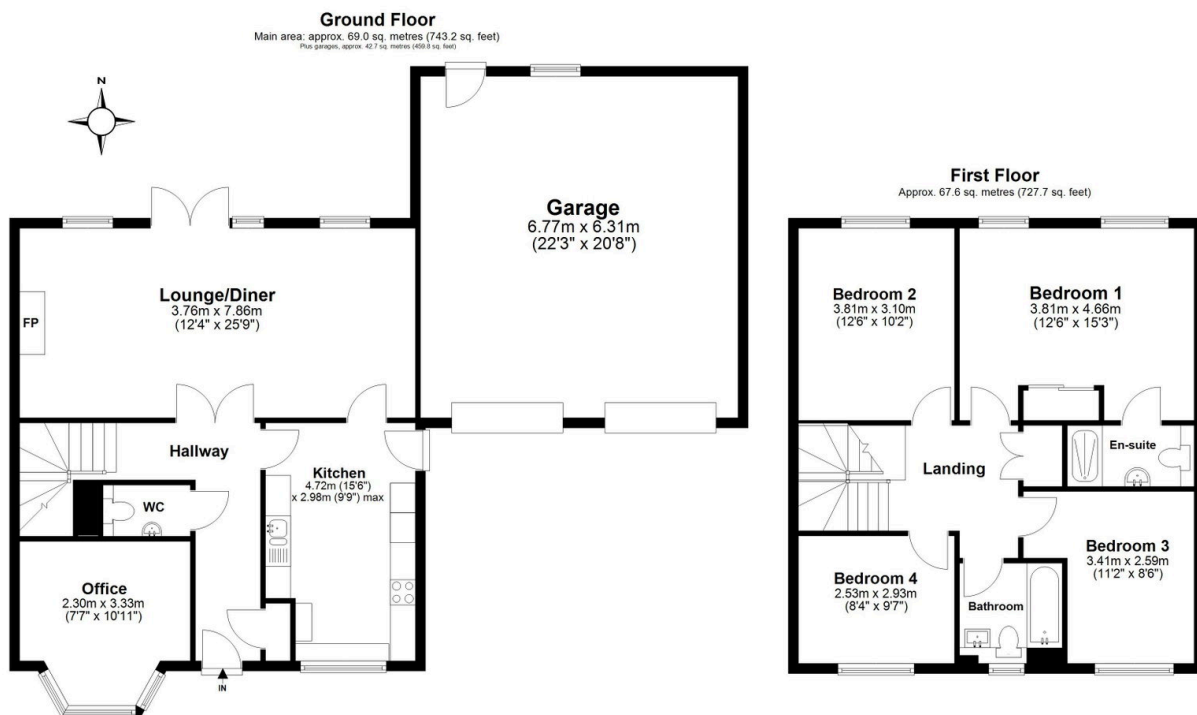
4 2 2



Situated within the highly sought-after Fairfield Gardens development, this beautifully presented four-bedroom detached family home offers stylish and spacious accommodation throughout, perfectly suited for modern family living. Immaculately decorated and maintained by the current owners, the property combines contemporary interiors with excellent future potential, making it an ideal long-term family home.

Key Features

- Must see video tour
- Beautifully presented four-bedroom detached family home
- Spacious lounge/diner ideal for family living and entertaining
- Modern fitted kitchen with contemporary finishes
- Versatile home office/snug space
- Principal bedroom with en-suite shower room
- Garage offering excellent conversion potential (STPP)
- Further scope for extension/loft conversion, as seen on neighbouring properties
- Stunning rolling countryside views to the rear
- Energy efficient home with an EPC rating of B and excellent access to the A1(M)



Main area: Approx. 136.7 sq. metres (1470.9 sq. feet)
Plus garages, approx. 42.7 sq. metres (459.8 sq. feet)

Every attempt has been made to ensure the accuracy of this floor plan, however no responsibility is taken for errors, omissions or mis-measurements. This plan is for illustrative purposes and is a guideline only and should be used as such by any prospective purchaser.
Copyright 2025 - RobSpicePhoto.com
Plan produced using PlanUp.