



Connells

Greenhill Bowleaze Coveway
Weymouth

Greenhill Bowleaze Coveway Weymouth DT3 6PP

for sale offers over
£30,000



Property Description

Greenhill 32 is a Willerby Kelston 2020 and is 36.00 by 12.00. It is located on the luxury development of the 5 Star 'Waterside, Bowleaze Cove Holiday Park & Spa', This lodge has been finished to the very highest standards throughout and is brimming with luxury fittings. Further benefits include use of a spa, gym, heated indoor and outdoor swimming pools plus a splash zone for toddlers and various bars for drinks and meals. Located within a short stroll Bowleaze Cove, and the stunning surrounding coastline. Weymouth and Dorchester are just a short drive, and South Western train line provides access to Bournemouth, Winchester, and London Waterloo.

Entrance

Low steps leading to single front door. Single door leading to;

Hallway

Skirt boarding. Inset spot lighting. Wall mounted radiator. Brushed chrome power point. Brushed chrome light switch. Door leading into:-



Open Plan Living

16' 9" x 11' 8" (5.11m x 3.56m)

Living Area

Outstanding triple aspect room comprising of lounge area with large window. Inset feature electric fireplace. Dining area with side aspect large double glazed window. Spot lighting. USB power points. Television point. Carpeted.

Kitchen Area

Kitchen area comprising of luxury eye and base level units, with worksurfaces over and fitted appliances including; microwave, fridge freezer, 4 ring gas oven and grill, extractor plus a breakfast area. Inset stainless steel sink unit and mixer tap with drainer. Spot lighting. Side aspect double glazed window. Wall mounted radiator.

Bedroom One

6' 7" x 6' 6" (2.01m x 1.98m)

Side aspect double glazed window. Spot lighting. Fitted wardrobe and bedroom furniture. Wall mounted radiator. Brushed chrome power points. Carpeted. Television point. Door leading into

En Suite

Side aspect double glazed window. Modern suite comprising shower unit, low level WC and vanity wash hand basin. Wall mounted heated towel rail. Extractor fan.

Bedroom Two

10' 9" x 5' (3.28m x 1.52m)

Side aspect double glazed window. Spot lighting. Wall mounted radiator. Carpeted.
Brushed chrome power points. Brushed chrome light switch. Television point.

Bedroom Three

8' 5" max x 5' 8" (2.57m max x 1.73m)

Side aspect double glazed window. Spot lighting. Wall mounted radiator. Carpeted. Power points.

Shower Room

Modern suite comprising shower unit, low level WC and wash hand basin with vanity unit.
Wall mounted heated towel rail. Extractor fan. Electrical shaver point. Velux window.

Outside

Private Veranda

Expansive raised veranda providing plenty of space for entertaining and enjoying the stunning environment. There is an outside tap.

Allocated Parking

Parking for one car.

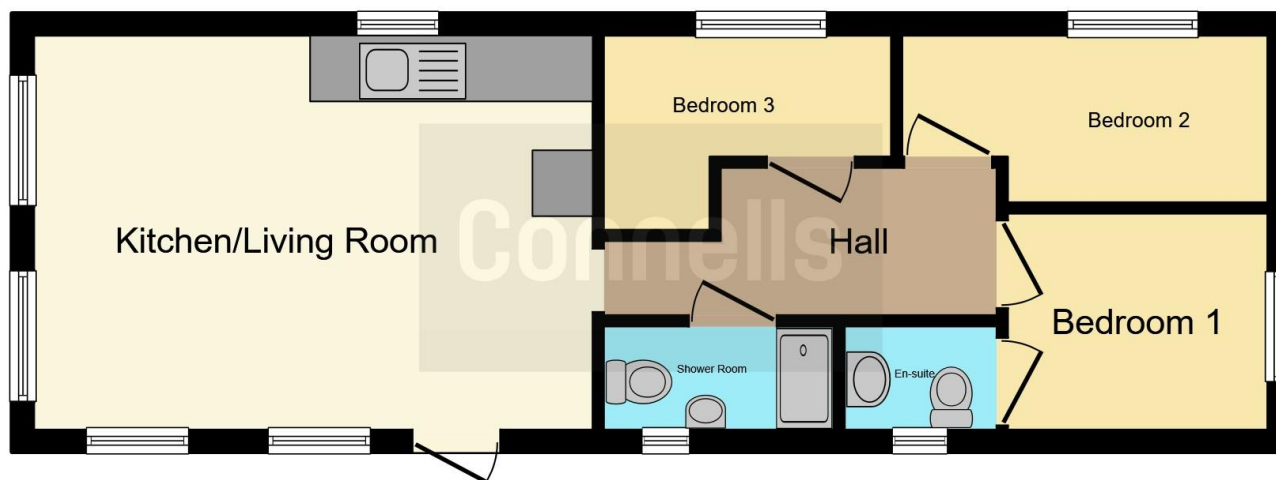
Site Fees

The vendor informs us that the site fees are £9905.00 PA, which includes electric & gas use. This property holds a 14 year lease from 12 June 2025 .









This floor plan is for illustrative purposes only. It is not drawn to scale. Any measurements, floor areas (including any total floor area), openings and orientation are approximate. No details are guaranteed, they cannot be relied upon for any purpose and they do not form part of any agreement. No liability is taken for any error, omission or misstatement. A party must rely upon its own inspection(s). Powered by www.focalagent.com

To view this property please contact Connells on

T 01305 770 333
E weymouth@connells.co.uk

84 St. Thomas Street
WEYMOUTH DT4 8EN

EPC Rating:
Exempt

Tenure:

view this property online connells.co.uk/Property/WEY309520

We are currently awaiting Tenure details. For further information please contact the branch. Please note additional fees could be incurred for items such as leasehold packs.



1. MONEY LAUNDERING REGULATIONS Intending purchasers will be asked to produce identification documentation at a later stage and we would ask for your co-operation in order that there will be no delay in agreeing the sale. 2. These particulars do not constitute part or all of an offer or contract. 3. The measurements indicated are supplied for guidance only and as such must be considered incorrect. Potential buyers are advised to recheck measurements before committing to any expense. 4. We have not tested any apparatus, equipment, fixtures, fittings or services and it is in the buyers interest to check the working condition of any appliances.

Connells Residential is registered in England and Wales under company number 1489613, Registered Office is Cumbria House, 16-20 Hockliffe Street, Leighton Buzzard, Bedfordshire, LU7 1GN. VAT Registration Number is 500 2481 05.

See all our properties at www.connells.co.uk | www.rightmove.co.uk | www.zoopla.co.uk

Property Ref: WEY309520 - 0011