

OVER 60?

Secure this property
for up to **59% less!**

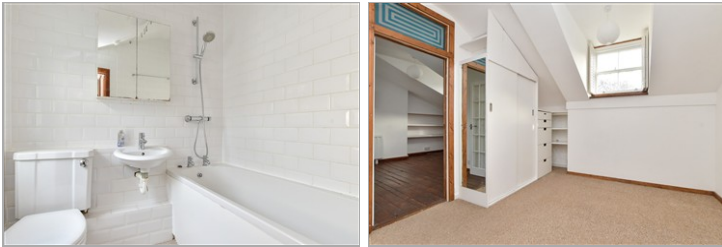


Guide Price
£190,000
Leasehold

1x  1x  1x 

Norfolk Terrace, Brighton, East Sussex,
BN1

cubitt&west
Helping you move forwards



Main features

- Ideally situated in the hub of Brighton, with all its shops and restaurants
- Close to the vibrant seafront with its cafes and relaxing vibe
- A short walk to Brighton train station, ideal for commuters
- Perfect first home or investment
- Offered chain free

Accommodation

TOP FLOOR

Entrance Hall

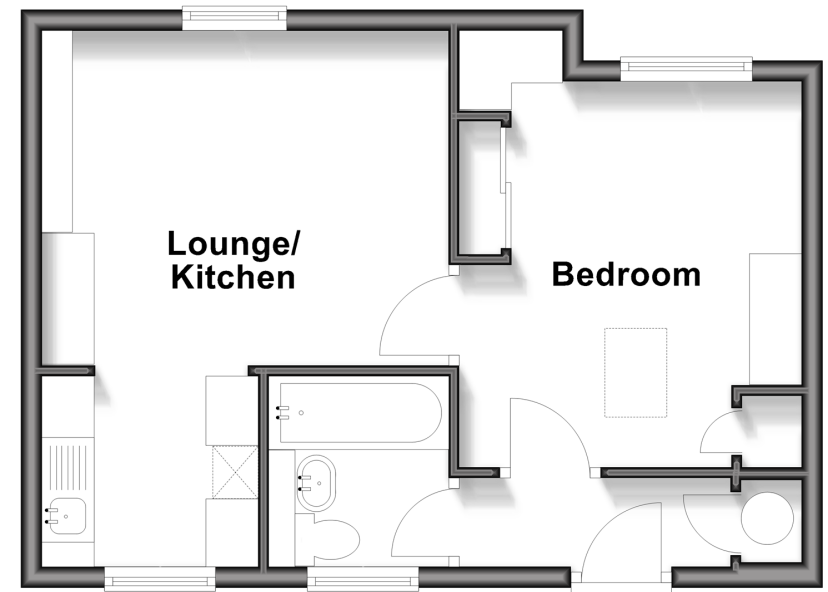
Lounge/Kitchen: 16'8 x 12'8 (5.08m x 3.86m)

Bedroom : 12'1 x 10'3 (3.69m x 3.13m)

Bathroom

Top Floor

Approx. 36.1 sq. metres (388.6 sq. feet)



Call Central Brighton - 01273 820600 ■ cubittandwest.co.uk

- Legal advice should be taken to verify fixtures/fittings, planning, alterations and/or lease details
- Appliances & services are untested, dimensions are approximate and floor plans are not to scale
- Through a Homewise Home For Life Plan people aged 60+ can secure this property for up to 50% less, by purchasing a Lifetime Lease



32412875/20251203/AB/JR