



HEARNES
WHERE SERVICE COUNTS

FOR SALE
HEARNES
01425 489955

Collins Lane, Ringwood, BH24 1LD

Perfectly positioned just moments from the vibrant heart of Ringwood, this beautifully maintained and thoughtfully extended home offers a rare opportunity to enjoy town centre living without compromise. Whether it's popping out for coffee, walking the children to school, or enjoying the weekly market, everything you need is on your doorstep.

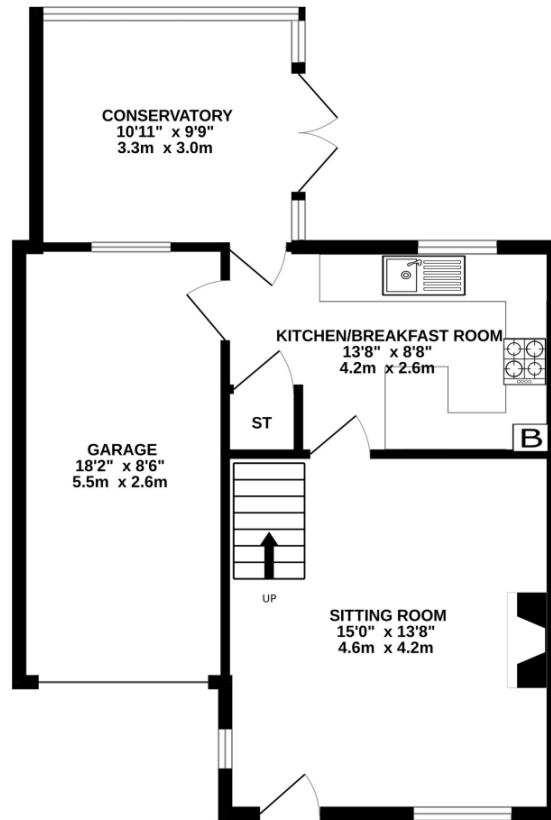
Set just a few hundred metres from highly regarded infant, junior, and senior schools, and within easy reach of shops, restaurants, and local amenities, this property combines the ease of urban living with the comfort of a quiet residential setting. Offered for sale by its original owners, it's clear this home has been cherished for its unbeatable location and practical layout. Inside, the first floor hosts three well-proportioned bedrooms, a modern family bath/shower room, and a private en-suite.

The ground floor features a welcoming sitting room with a front aspect, a well-equipped kitchen with ample storage and work surfaces, and a bright conservatory overlooking the enclosed courtyard garden—ideal for dining or relaxing. The rear garden is designed for low maintenance, laid to paving and fully enclosed with side access. To the front, a spacious driveway leads to the garage and front entrance, with a lawned area that could be adapted for further parking (subject to consents). Pretty flower and shrub borders add a splash of colour and charm.

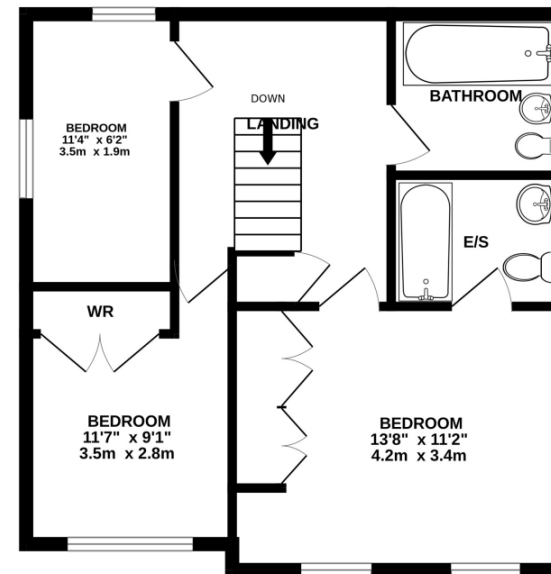
This charming home offers the comfort of gas central heating and the convenience of an integral garage with internal access. But what truly makes this property special is its location. Situated just moments from Ringwood's welcoming town centre, daily life becomes delightfully simple. Whether it's a peaceful morning walk, a quick trip to the shops, or visiting friends and family, everything you need is close at hand. It's a home that supports a relaxed, well-connected lifestyle.



GROUND FLOOR
578 sq.ft. (53.7 sq.m.) approx.



1ST FLOOR
506 sq.ft. (47.0 sq.m.) approx.



TOTAL FLOOR AREA: 1085 sq.ft. (100.8 sq.m.) approx.

Whilst every attempt has been made to ensure the accuracy of the floorplan contained here, measurements of doors, windows, rooms and any other items are approximate and no responsibility is taken for any error, omission or mis-statement. This plan is for illustrative purposes only and should be used as such by any prospective purchaser. The services, systems and appliances shown have not been tested and no guarantee as to their operability or efficiency can be given.
Made with Metropix ©2025

52-54 High Street, Ringwood, Hampshire Tel : Email : anthony@hearnes.com www.hearnes.com

OFFICES ALSO AT: BOURNEMOUTH, FERNDOWN, POOLE & WIMBORNE

