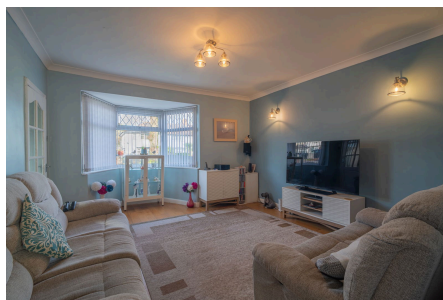


Riversdale Road, Birmingham, B14 4JQ

Offers Over £260,000

3 1 1

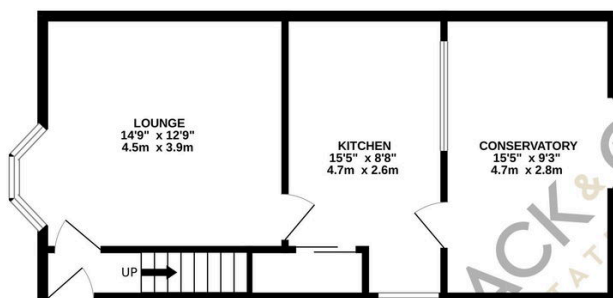


Spacious Three-Bedroom Home with Exceptional Extension Potential & Large Plot in Prime Kings Heath Location

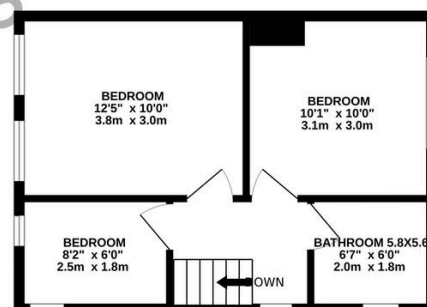
Key Features

- Exceptional scope for extensions, subject to planning permission — ideal for creating a large open-plan layout or additional bedrooms
- Large frontage with generous driveway providing excellent off-road parking
- Three well-arranged bedrooms and family bathroom
- Close to Kings Heath, Stirchley, and a wide range of shops, cafés, and amenities
- Near popular parks including Kings Heath Park and Swanshurst Park
- Substantial rear garden offering huge potential for landscaping or future development
- Spacious lounge, kitchen, and conservatory to the rear
- Positioned on a sought-after residential road in the B14 area
- Excellent transport links with nearby bus routes and Yardley Wood Train Station
- Ideal for families, first-time buyers, and buyers looking for a property with growth and improvement potential

GROUND FLOOR
484 sq.ft. (45.0 sq.m.) approx.



1ST FLOOR
355 sq.ft. (33.0 sq.m.) approx.



TOTAL FLOOR AREA : 839 sq.ft. (78.0 sq.m.) approx.

Whilst every attempt has been made to ensure the accuracy of the floorplan contained here, measurements of doors, windows, rooms and any other items are approximate and no responsibility is taken for any error, omission or mis-statement. This plan is for illustrative purposes only and should be used as such by any prospective purchaser. The services, systems and appliances shown have not been tested and no guarantee as to their operability or efficiency can be given.
Made with Metropix ©2025