

Asking Price £450,000



Cherry Cottage Rackenford, Tiverton, EX16 8DT

- Detached house in Rackenford
- Popular village location
- Plenty of living space
- Ample parking available
- Front and rear garden
- Beautiful scenic views
- 3 spacious bedrooms
- 2 reception rooms
- Workshop
- Cosy wood burners

Sales, Lettings, Mortgages:

Bampton 01398 332006 | Cullompton 01884 32100 | Tiverton 01884 253500



Cherry Cottage , Tiverton EX16 8DT

Nestled in the charming village of Rackenford, Tiverton, this delightful three-bedroom detached house offers a perfect blend of comfort and style.



Council Tax Band: D



Cherry Cottage is a wonderful home for all. Families will enjoy the flexible living areas, young professionals will appreciate the 'work from home' space, whereas it could also be the perfect home for those downsizing and wanting less maintenance.

With two spacious reception rooms, one of which benefitting from underfloor heating, this property provides ample space for family gatherings and entertaining guests. The well-designed layout ensures that every corner of the home is utilised effectively, making it ideal for family living.

The property boasts stunning views that enhance the tranquil atmosphere of the village, allowing you to enjoy the beauty of the surrounding countryside from the comfort of your home. The three upstairs bedrooms are well-proportioned, providing a peaceful retreat for rest and relaxation.

In addition to its inviting interiors, this home offers convenient parking for two vehicles on the driveway, ensuring that you and your guests have easy access. There is additional parking once the gates are opened, onto the gravel area of the rear garden. The

location is not only picturesque but also benefits from the amenities of the nearby town of Tiverton, just a short drive away via the conveniently located A361 link road, making it a practical choice for families and professionals alike.

This lovely detached house in Rackenford is a rare find, combining the charm of village life with the comforts of modern living. Whether you are looking to settle down or seeking a peaceful retreat, this property is sure to meet your needs. Do not miss the opportunity to make this beautiful home your own.

Services:

Oil fired central heating, mains electricity, gas, water and drainage

Tenure:

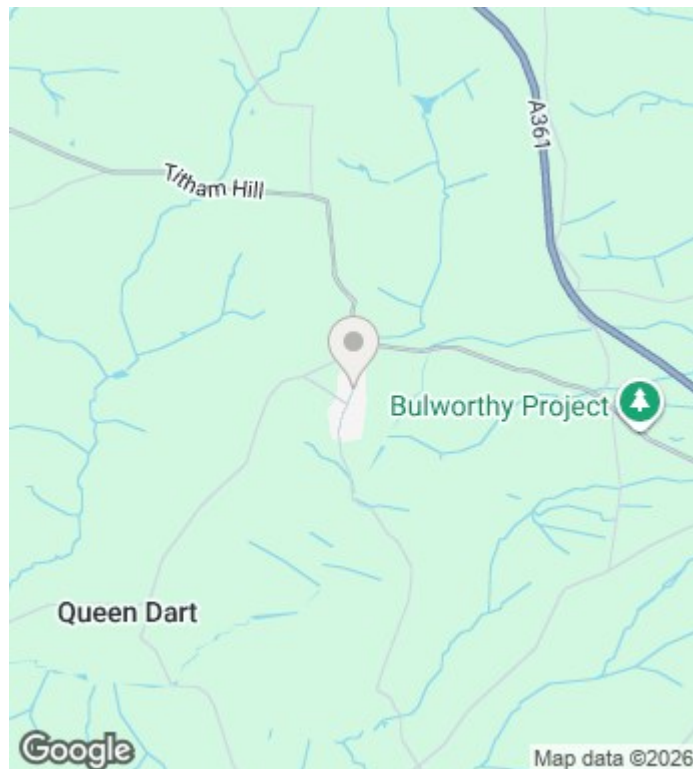
Freehold

Council Tax:

Band D

Local Authority:

Mid Devon District Council 01884 255255



Directions

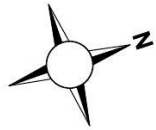
What3Words - ///civic.penned.heaven

Viewings

Viewings by arrangement only. Call 01884 253500 to make an appointment.

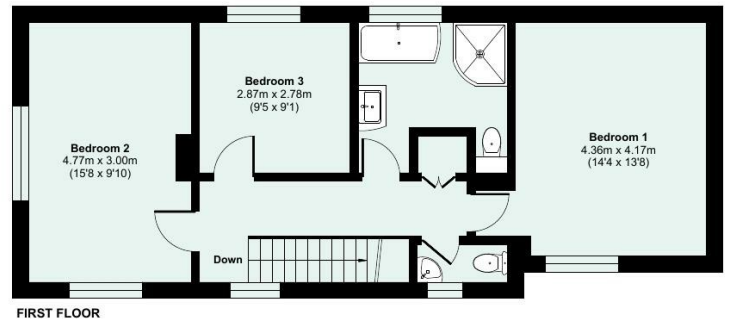
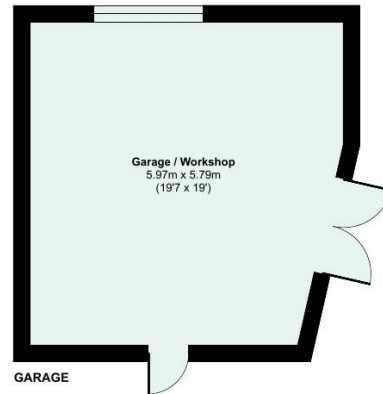
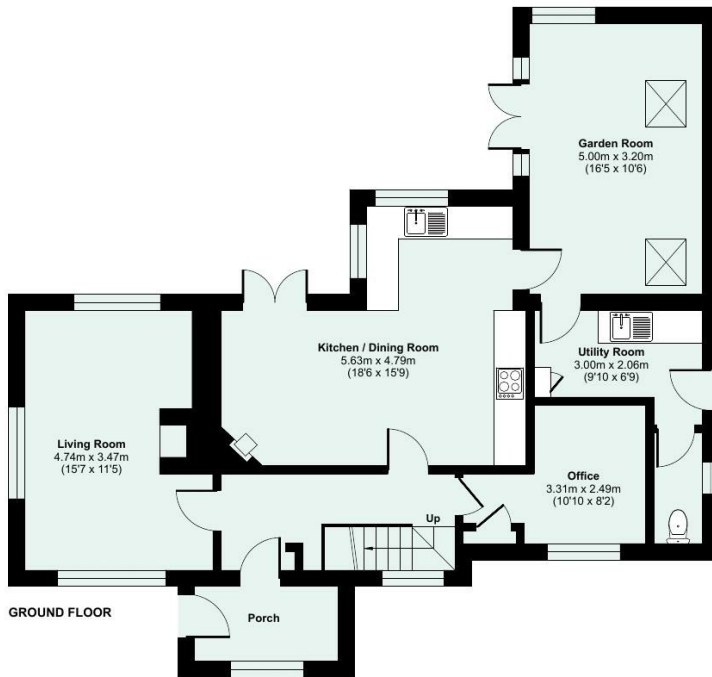
EPC Rating:

Energy Efficiency Rating		Current	Potential
Very energy efficient - lower running costs			
(92 plus) A			
(81-91) B			
(69-80) C			
(55-68) D		63	70
(39-54) E			
(21-38) F			
(1-20) G			
Not energy efficient - higher running costs			
England & Wales		EU Directive 2002/91/EC	



Approximate Area = 1540 sq ft / 143 sq m
Garage = 355 sq ft / 32.9 sq m
Total = 1895 sq ft / 175.9 sq m

For identification only - Not to scale



Floor plan produced in accordance with RICS Property Measurement 2nd Edition, incorporating International Property Measurement Standards (IPMS2 Residential). © nichecom 2026. Produced for Seddon Estate Agents LLP. REF: 1473286



[seddons.com](https://www.seddons.com)

Seddons is a trading name for both Seddon Estate Agents LLP (Company Number: OC302140) and Seddons Lettings Ltd (Company Number: 10248978) Registered in England. Registered Office: 8 Fore Street, Tiverton, Devon, EX16 6LH. Partners and Directors of both companies: Rob Hann, Dan Barclay, Emerald Seddon-Davey


seddons

Whilst every attempt is made to ensure our sales particulars are fair and accurate, they are only a general guide to the property and must not be relied on. Please qualify any specific points of interest with Seddons.