



4 Grantley House, The Common, Cranleigh
£275,000



ROGER COUPE
your local property experts

ESTATE AGENT
Est. 1991



4 Grantley House The Common

Cranleigh

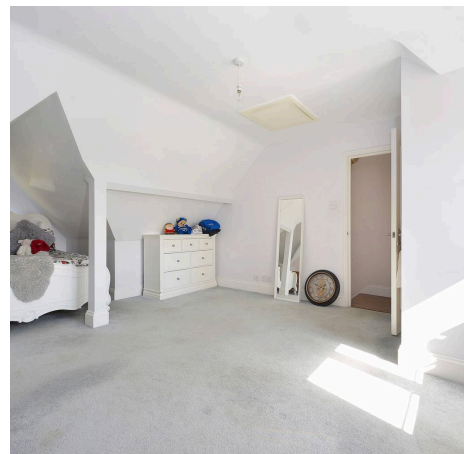
- Share of freehold
- Fitted kitchen/breakfast room
- Spacious 1st and 2nd floor duplex apartment
- Bathroom with separate shower and bath
- Large living room with views toward The Common
- Parking space
- Close to village centre

A surprisingly spacious one bedroom duplex apartment with accommodation arranged over two floors featuring a large living room opening into a kitchen/breakfast room and spacious bathroom with separate bath enclosure. From kitchen, there is occasional access via the window to a small roof terrace. Stairs rise to the top floor, where there is a large open plan double bedroom with ensuite cloakroom with WC and wash hand basin. The property benefits from gas fired heating and double glazed windows and is conveniently situated close to the village centre with lovely views to the front towards the cricket common. Outside, the property benefits from an allocated parking space. We highly recommend a visit to fully appreciate the accommodation on offer.

Council Tax band: TBD

Tenure: Leasehold - Share of Freehold


EPC Energy Efficiency Rating: D

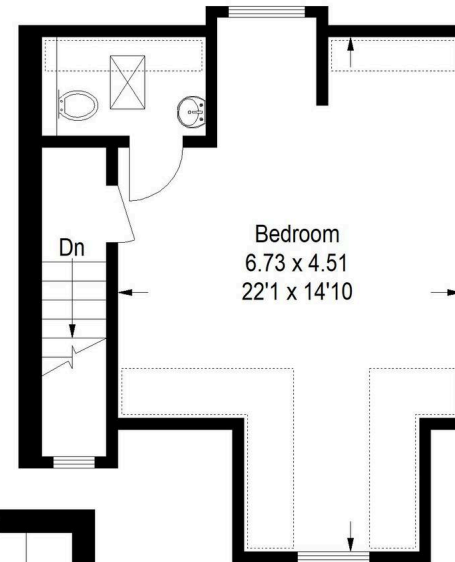


Grantley House

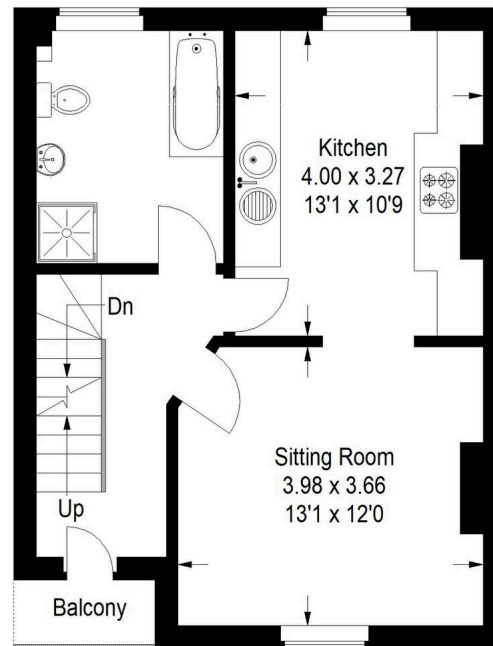
Approximate Gross Internal Area:
Ground Floor = 4 sq m / 43 sq ft
First Floor = 44 sq m / 474 sq ft
Second Floor = 32 sq m / 344 sq ft
Total = 80 sq m / 861 sq ft



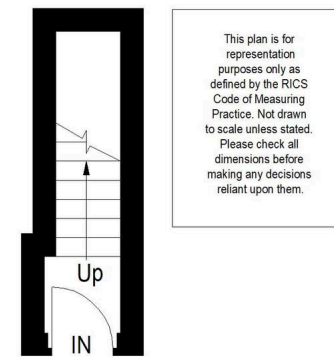
 = Reduced headroom
below 1.5 m / 5'0



Second Floor



First Floor



Ground Floor

This plan is for
representation
purposes only as
defined by the RICS
Code of Measuring
Practice. Not drawn
to scale unless stated.
Please check all
dimensions before
making any decisions
reliant upon them.



Roger Coupe Estate Agent

Roger Coupe Estate Agent, 151 High Street - GU6 8BB

01483268555 • housesales@rogercoupe.com • www.rogercoupe.com



For clarification, these sales particulars have been prepared as a general guide. Room sizes are approximate and we have not carried out a detailed survey, nor tested any appliances, equipment, fixtures or services, so cannot verify that they are in working order, or fit for their purpose.