

Lambert & Foster



22 FISHERS ROAD

STAPLEHURST | KENT | TN12 0DD

Set in a popular no through road is this extended four bedroom semi detached house providing a generous 1708 sq ft of living accommodation, complemented by a lovely south facing garden and off road parking for several vehicles, all occupying a central village location within a short walk of amenities and mainline train station. Cranbrook School catchment area.

Guide Price £475,000

FREEHOLD





22 FISHERS ROAD

STAPLEHURST, KENT, TN12 0DD

22 Fishers Road is an extended, semi detached family house, presenting brick elevations set with replacement UPVC windows, beneath a pitched tiled roof. The 1708 sq ft accommodation is arranged over two floors.

To the ground floor, entrance hall with cloakroom, 38' kitchen/diner with utility room and garden outlook, spacious reception room with feature fireplace and conservatory. To the first floor, main bedroom with beautiful mirrored oak framed fitted wardrobes, a walk in wardrobe and en-suite bathroom, bedrooms two and three (doubles), bedroom four/study room and family bathroom.

Outside, off road parking for several vehicles and a neatly tended, south facing rear garden with mature shrubs and borders. Mainly laid to patio and lawn areas with two garden sheds.

Staplehurst has a range of local amenities including post office, Sainsburys supermarket, primary school and mainline station providing commuter services to London Charing Cross, Waterloo, London Bridge and Cannon Street (approximately 55 minutes). The County town of Maidstone is approximately 9 miles away providing a wider range of both shopping and leisure facilities.



- SEMI DETACHED FAMILY HOUSE
- 1708 SQ FT OF ACCOMMODATION
- FOUR BEDROOMS
- TWO BATHROOMS & CLOAKROOM
- 38' KITCHEN/DINING ROOM & UTILITY

- RECEPTION ROOM
- CONSERVATORY
- SOUTH FACING REAR GARDEN
- OFF ROAD PARKING FOR SEVERAL CARS
- CRANBROOK SCHOOL CATCHMENT AREA

VIEWING: By appointment only.
Cranbrook Office: 01580 712888.

WHAT3WORDS: delays.shine.aura

TENURE: Freehold

SERVICES & UTILITIES:

Electricity supply: Mains **Water supply:** Mains

Sewerage: Mains **Heating:** Mains gas fired central heating

LOCAL AUTHORITY: www.maidstone.gov.uk

COUNCIL TAX: Band D **EPC:** C (74)

BROADBAND & MOBILE COVERAGE:

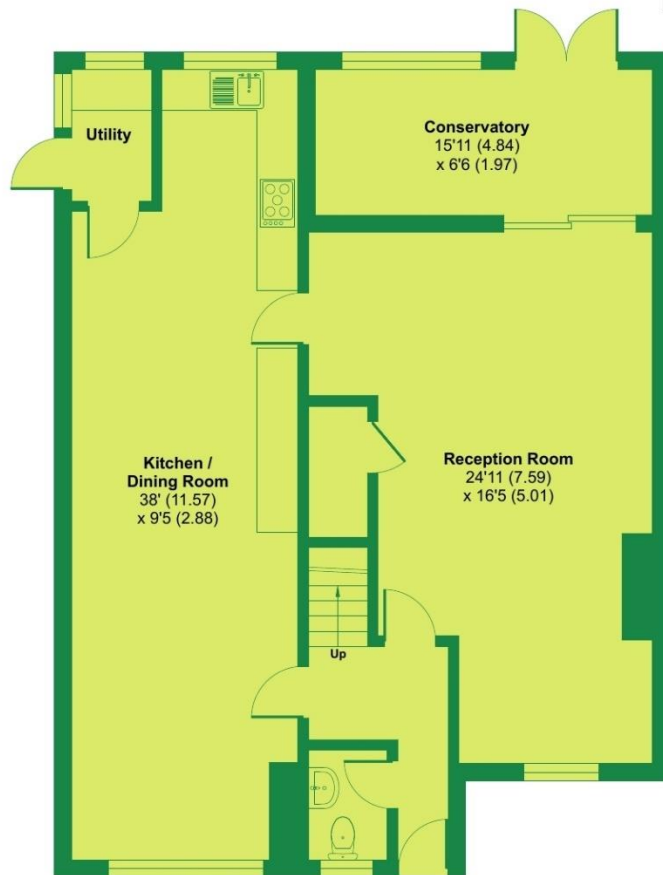
(Visit <https://checker.ofcom.org.uk/en-gb/broadband-coverage> or enquire with the office for more information).

For identification purposes only. The position and size of doors, windows, appliances and other features are approximate only.

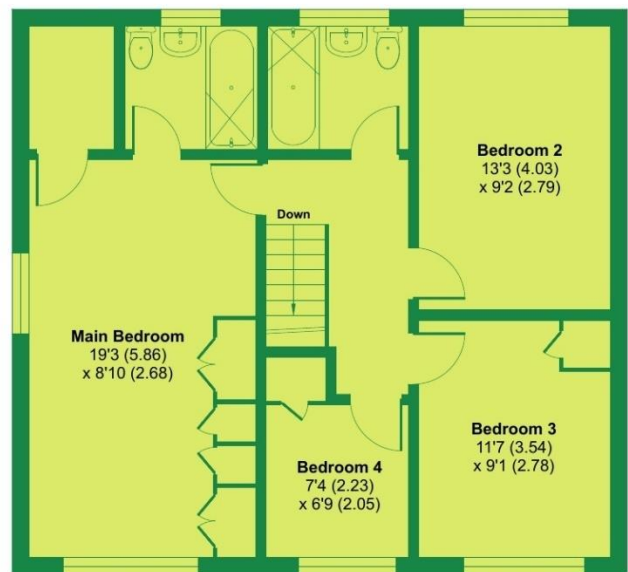
Fishers Road, Staplehurst, Tonbridge, TN12

Approximate Area = 1708 sq ft / 158.6 sq m

For identification only - Not to scale



GROUND FLOOR



FIRST FLOOR

Floor plan produced in accordance with RICS Property Measurement 2nd Edition, Incorporating International Property Measurement Standards (IPMS2 Residential). © nichecom 2025. Produced for Lambert and Foster Ltd. REF: 1293466

PARTICULARS, PLANS AND SCHEDULES: The particulars and acreages stated, together with the plans are believed but not guaranteed to be correct. They are given by the Agents to assist viewers but are specifically excluded from any contract. Prospective purchasers must satisfy themselves as to the information enclosed.

IMPORTANT NOTICE: Lambert & Foster themselves and the vendors and/or lessors of this property whose agents they are, give notice that: The particulars are set out as a general outline only for guidance and do not constitute part of an offer or contract. All descriptions, dimensions, references to condition and necessary permissions for the use and occupation and other details are given in good faith and are believed to be correct. Any intending purchasers/lessees should not rely on them as statements or presentations of fact but satisfy themselves by inspection or otherwise as to the correctness of each of them. If there are any points which are of particular importance to you, please contact the office and we will be pleased to check the information, particularly if you are travelling some distance to view the property.

In accordance with the Consumer Protection from Unfair Trading Regulations 2008 (CPR), we must advise that we have not tested any of the main services, various electrical or gas appliances and fixtures which may be referred to in these sales particulars. Any prospective purchasers are strongly advised to satisfy themselves that such are in working order. No person in the employment of the Agents has any authority to make or give any representations or warranty whatever in relation to this property.

MONEY LAUNDERING REGULATION: In accordance with Money Laundering Regulations, we are now required to obtain proof of identification for all vendors and purchasers. You will need to supply information required for us to complete our identification checks which will include your date of birth, main residential address and a colour copy of your passport or photo driving licence. Lambert & Foster apologise for any inconvenience this may cause, but it is a legal requirement. Lambert & Foster will not be able to conclude a sale on your behalf to any person or people who are unable to provide confirmation of identification. Note: Lambert & Foster currently employs the services of Smartsearch to verify the identity and address of vendors/purchasers.

OFFICES LOCATED AT:

PADDOCK WOOD, KENT
Tel. 01892 832 325
77 Commercial Road,
Paddock Wood, Kent TN12 6DS

WADHURST, EAST SUSSEX
Tel. 01435 873 999
Helix House, High Street
Wadhurst, East Sussex TN5 6AA

HYTHE, KENT
Tel. 01303 814 444
Hillhurst Farm, Stone St,
Westenhanger, Hythe CT21 4HU

CRANBROOK, KENT
Tel. 01580 712 888
Weald Office, 39 High Street
Cranbrook, Kent TN17 3DN

PROPERTY PROFESSIONALS FOR OVER 120 YEARS



**Lambert
& Foster**