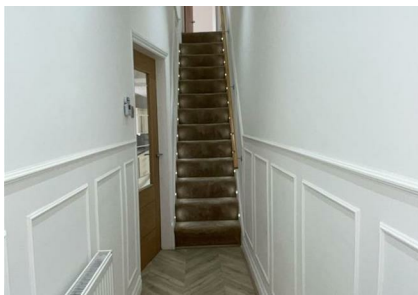
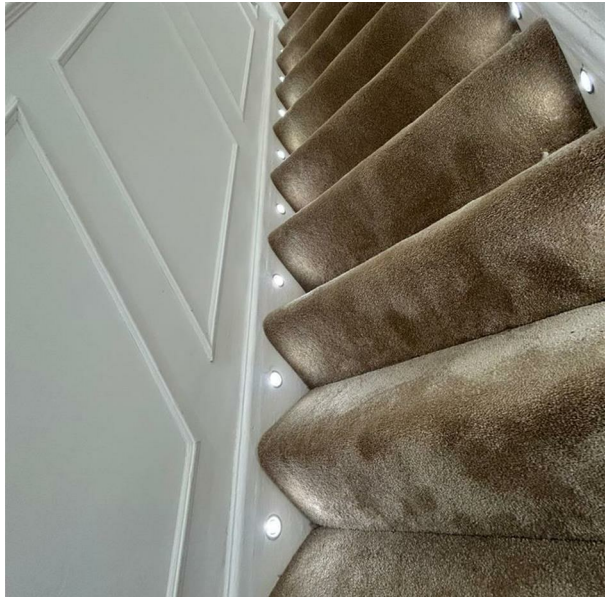


Elmsworth Avenue, Manchester, M19 3NS

Guide Price £330,000

Council Tax Band: A



Welcome to this beautifully refurbished terraced house located on Elmsworth Avenue in the vibrant area of Levenshulme, Manchester. This property boasts a generous 882 square feet of living space, thoughtfully designed to meet the needs of modern living.

Upon entering, you will find two spacious reception rooms, perfect for entertaining guests or enjoying quiet family evenings. The house features three well-proportioned bedrooms, providing ample space for a growing family or those seeking a home office. With two contemporary bathrooms, morning routines will be a breeze, ensuring convenience for all residents.

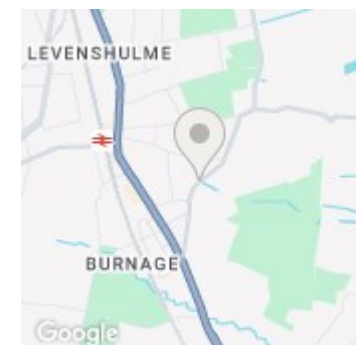
The recent full modern refurbishment has transformed this home into a stylish and comfortable retreat, ready for you to move in and make it your own. The property is ideally situated near all major transport links, making commuting to Manchester city centre or Stockport effortless.

Levenshulme is rapidly becoming a highly sought-after area, known for its community spirit and local amenities. This property not only offers a fantastic home but also the opportunity to be part of a thriving neighbourhood.

Do not miss the chance to view this exceptional property that combines modern living with a prime location. It is perfect for those looking to enjoy the best of both worlds in Manchester.



**Open House North Manchester**



Energy Efficiency Rating		
	Current	Potential
Very energy efficient - lower running costs		
(92 plus) <b>A</b>		
(81-91) <b>B</b>		<b>89</b>
(69-80) <b>C</b>		
(55-68) <b>D</b>	<b>64</b>	
(39-54) <b>E</b>		
(21-38) <b>F</b>		
(1-20) <b>G</b>		
Not energy efficient - higher running costs		
<b>England &amp; Wales</b>	EU Directive 2002/91/EC	