



## 6 Childes Court, Nuneaton, CV11 5SQ

**£650 Per Month**

Spacious One Bedroom Ground Floor Apartment – Henry Street, Nuneaton CV11  
Available Now. Secure Parking. Walking Distance to Town Centre

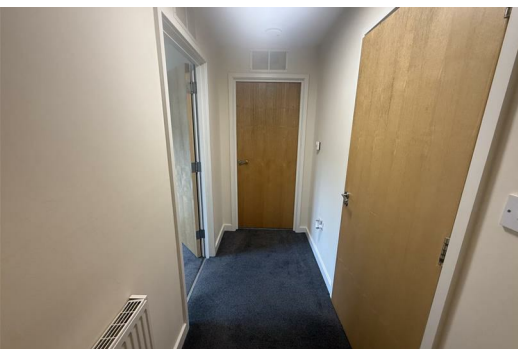
SE Properties are delighted to present this well-presented and spacious one-bedroom ground floor apartment, ideally situated on Henry Street, Nuneaton, CV11.

Available to let immediately, this property is perfectly suited to working professionals or couples seeking modern, low-maintenance living in a convenient location.

The accommodation briefly comprises:

\* Secure communal entrance

\* Entrance hallway



**BEDROOM**

**KITCHEN**

**LOUNGE**

Energy Efficiency Rating		Current	Potential
Very energy efficient - lower running costs			
(92 plus) A			
(81-91) B			
(69-80) C			
(55-68) D			
(39-54) E			
(21-38) F			
(1-20) G			
Not energy efficient - higher running costs			
England & Wales		EU Directive 2002/91/EC	

Environmental Impact (CO <sub>2</sub> ) Rating		Current	Potential
Very environmentally friendly - lower CO <sub>2</sub> emissions			
(92 plus) A			
(81-91) B			
(69-80) C			
(55-68) D			
(39-54) E			
(21-38) F			
(1-20) G			
Not environmentally friendly - higher CO <sub>2</sub> emissions			
England & Wales		EU Directive 2002/91/EC	



63-65 Regent Street, Nuneaton, CV11 4BL  
T. 02476343683 F. 02476371939 E. [sally@seproperties.co.uk](mailto:sally@seproperties.co.uk)  
PROPRIETOR - Sally A Ellis (DIP RLM)  
VAT Reg No: 233 3230 52 Company No: 09803013