



Arkley Road

Hall Green, Birmingham

- A Mid-Terrace Two Bedroom Family Home
- Fitted Kitchen & Three Piece Family Bathroom
- Rear Garden
- Driveway Parking

£215,000

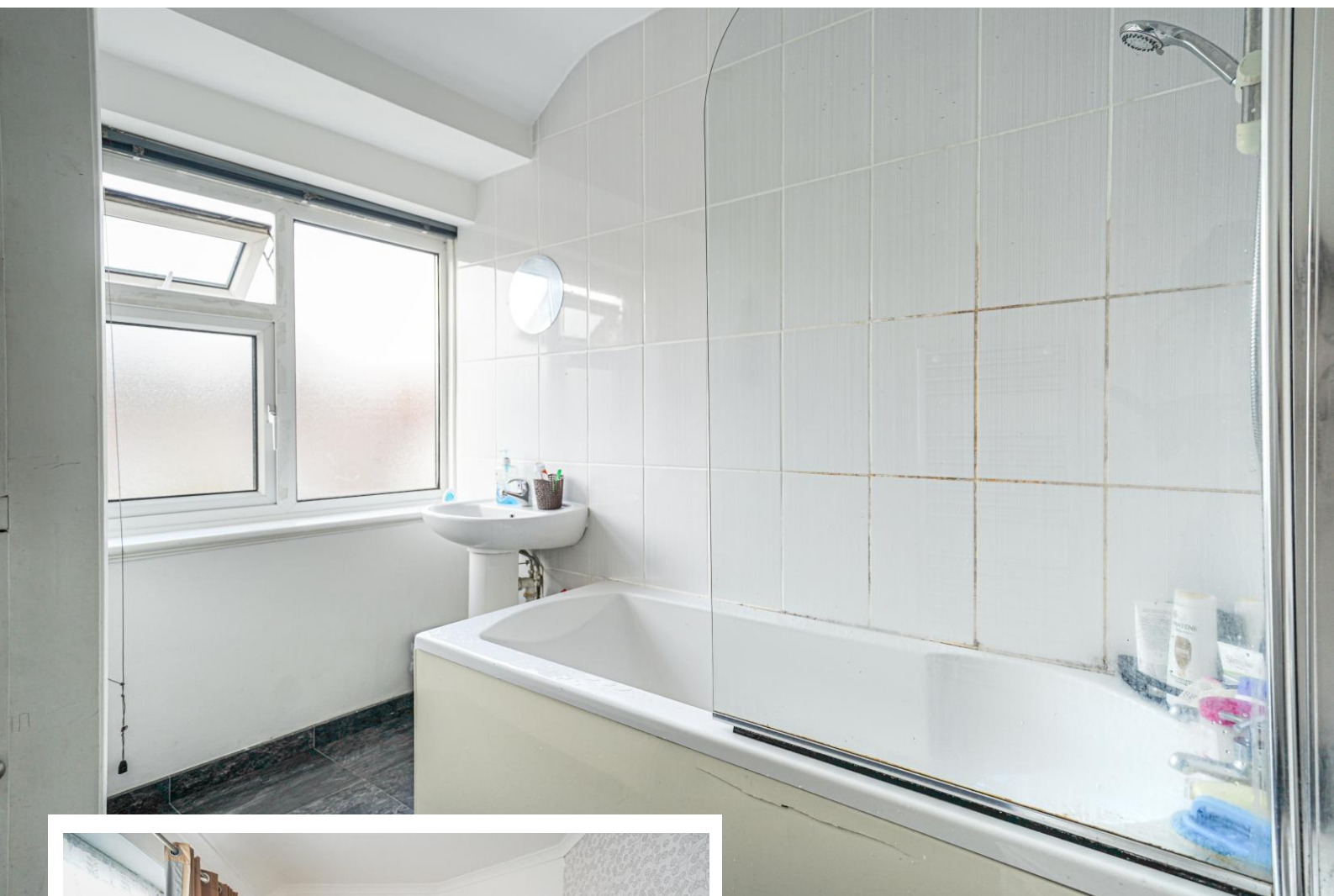
Current EPC Rating - D
Current Council Tax Band - A





Property Description

A mid-terrace family home situated in a most convenient location offering accommodation comprising a lounge, fitted kitchen, two good size bedrooms, family bathroom, rear garden and driveway parking



Rooms & Measurements

Lounge to Front 4.7m x 3.4m (15'5" x 11'1")

Fitted Kitchen to Rear 3.7m x 2.3m (12'1" x 7'6")

Bedroom One to Rear 3.8m x 2.6m (12'5" x 8'6")

Bedroom Two to Front 3.3m x 2.4m (10'9" x 7'10")

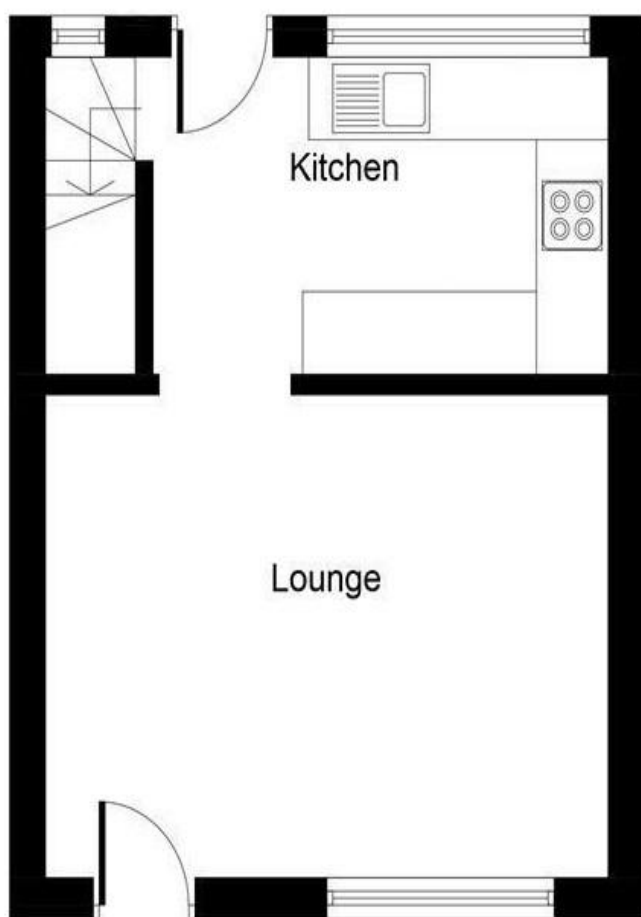
Family Bathroom to Front 2.7m x 2.2m (8'10" x 7'2")

Tenure

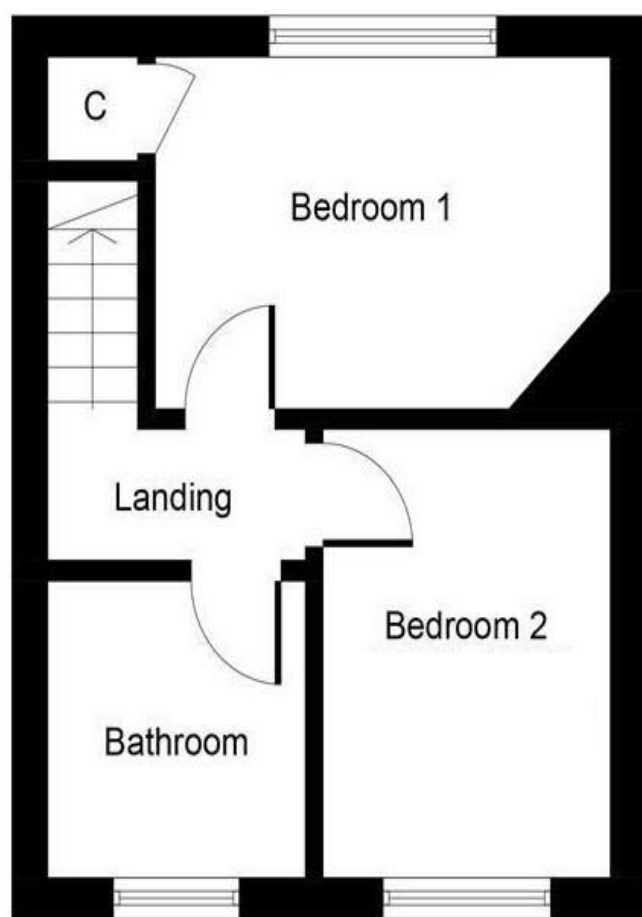
We are advised by the vendor that the property is freehold. We would advise all interested parties to obtain verification through their own solicitor or legal representative.

EPC supplied by vendor.

Current council tax band – A



Ground Floor



First Floor

316 Stratford Road
Shirley
Solihull
B90 3DN

www.smart-homes.co.uk
0121 744 4144

Agents Note: Whilst every care has been taken to prepare these particulars, they are for guidance purposes only. We believe all information to be correct from the day of marketing however, we advise and recommend that your conveyancer and or surveyor verifies all information supplied. All measurements are approximate are for general guidance purposes only and whilst every care has been taken to ensure their accuracy, they should not be relied upon and potential buyers are advised to recheck the measurements.