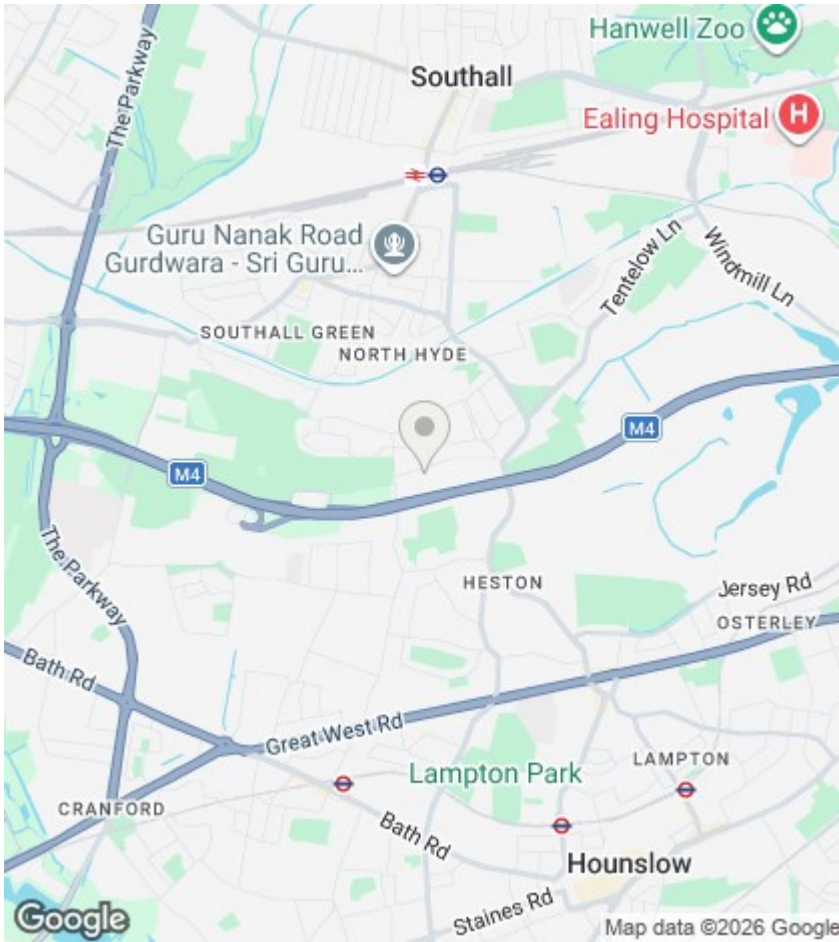




45 Fern Lane, Hounslow, TW5 0HN

Asking price £630,000

- 3 spacious bedrooms end terraced house
- 2 modern bathrooms
- Approx 100 sq.m internal area
- Viewing recommended
- Large open plan living with kitchen
- Close to Heathrow and Hounslow amenities
- Ideal family home



Directions

Viewings

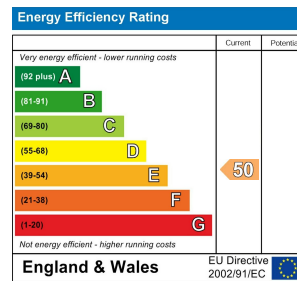
Viewings by arrangement only. Call 07850024915 to make an appointment.

Council Tax Band:

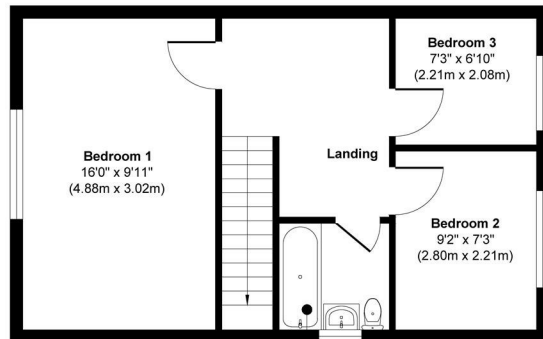
D

EPC Rating:

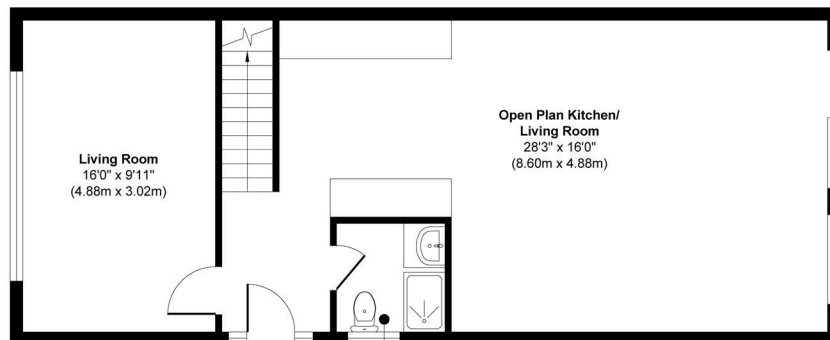
E



ern Lane, TW5



First Floor
Approximate Floor Area
423 sq. ft
(39.30 sq. m)



Ground Floor
Approximate Floor Area
662 sq. ft
(61.58 sq. m)

Approx. Gross Internal Floor Area 1085 sq. ft / 100.88 sq. m

Illustration for identification purposes only, measurements are approximate, not to scale.