

bartons 
FOR YOUR NEXT MOVE...



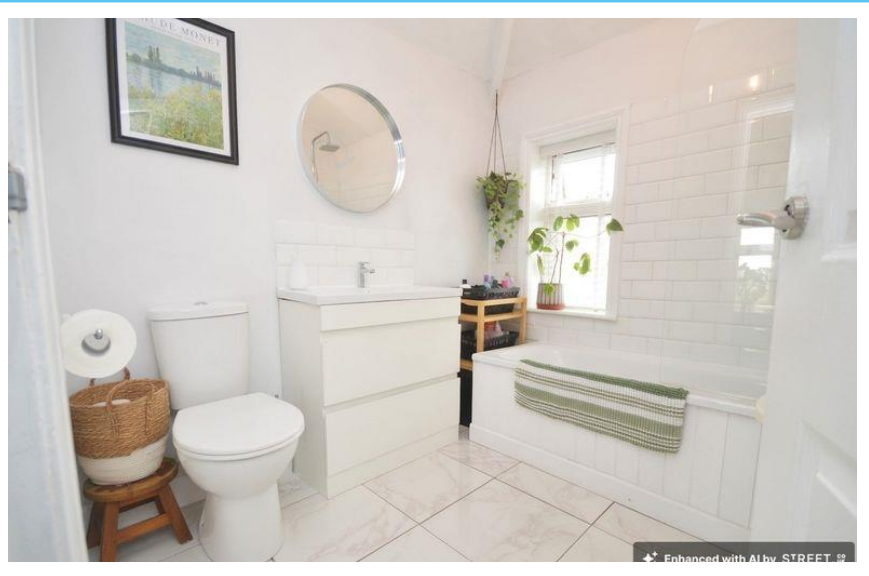
Lowfield Avenue, Greasbrough

Guide Price: £150,000 to £160,000



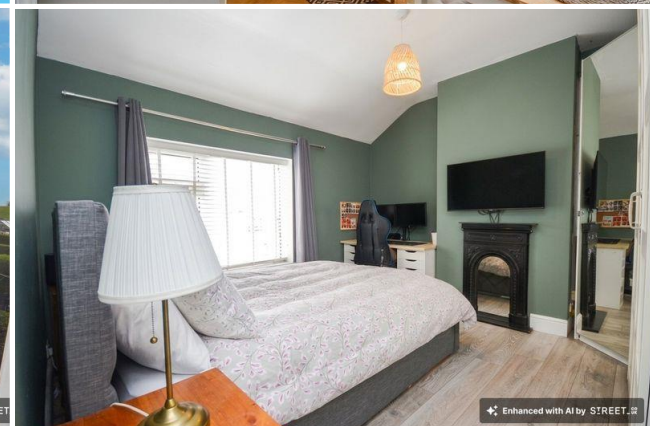
This well presented TWO bedroom semi detached home is situated in the sought after location of Greasborough. Beautifully flowing throughout, the property makes a perfect purchase for FIRST TIME BUYERS, FAMILIES or INVESTORS alike. Boasting sweeping views and a generous garden, this is a home not to be missed! The accommodation comprises a welcoming entrance hall leading into a spacious lounge featuring a charming fireplace with an oak mantel. The stylish kitchen diner offers a modern, neutral design with space for a dining table, along with patio doors opening out to the garden and fields beyond. There is also a practical utility area with space for a washing machine and fridge freezer. To the first floor are two generously sized double bedrooms and a contemporary family bathroom, complete with a tiled floor and a full size bath with shower over. Externally, the property benefits from large, tranquil rear gardens with open fields behind, providing a peaceful setting. Additional features include off-street parking, an EV charger, and convenient side gate access.

Viewings strictly by appointment only!***
www.bartons-net.co.uk



ACCOMMODATION

- Spacious TWO Bedroom Semi Detached House
- Popular Residential Location close to Schools, Shops and Transport Links
- Well-Maintained Throughout
- Neutral Fitted Kitchen Diner with handy Utility Room
- Two generously sized Double Bedrooms
- Stylish Family Bathroom
- Off Street Parking & EV Charger
- Large Rear Garden with sweeping views



51-53 Moorgate Street, Rotherham, South Yorkshire, S60 2EY
 T: 01709 515740 E: info@bartons-net.co.uk

EPC TO FOLLOW