



Guide Price
£160,000

Leasehold

1x  1x  1x 

**Gainsborough Close,
Basildon, Essex, SS14**

OVER 60?

Secure this property
for up to **59% less!**

 **DOUGLAS
ALLEN**
Helping you move forwards



Main features

- Open plan living
- Allocated parking space
- Close to transport links and local amenities
- Long lease
- 1 bedroom first floor flat with lift access



Accommodation

FIRST FLOOR

Entrance

Kitchen/Living Area: 21'0 x 11'0 (6.41m x 3.36m)

Bedroom : 11'7 x 10'2 (3.53m x 3.10m)

Bathroom

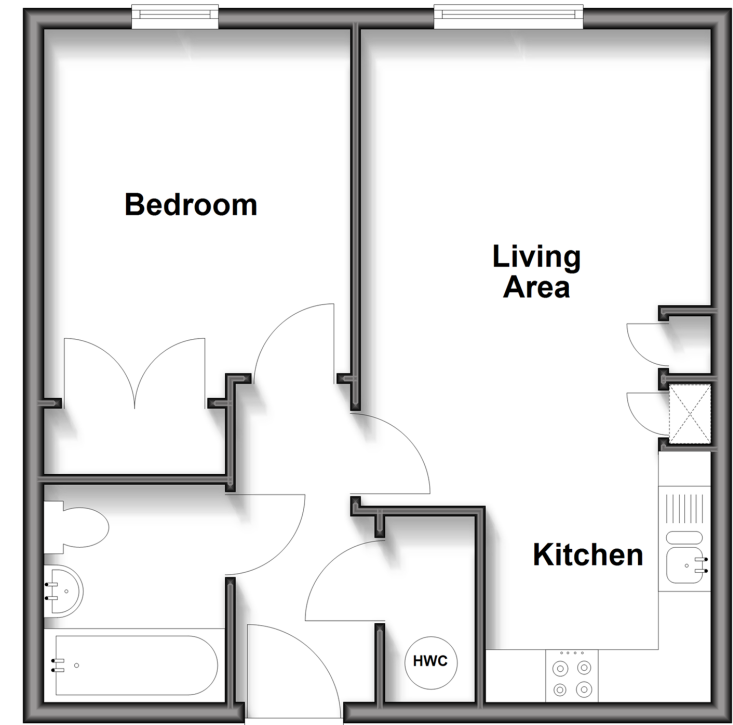
OUTSIDE

Allocated Parking Space



First Floor

Approx. 40.7 sq. metres (437.6 sq. feet)



Call Basildon - 01268 293993 ■ douglasallen.co.uk

- A private rental licensing scheme applies to some properties in this area, please check with the Local Authority before proceeding
- Legal advice should be taken to verify fixtures/fittings, planning, alterations and/or lease details
- Appliances & services are untested, dimensions are approximate and floor plans are not to scale
- Through a Homewise Home For Life Plan people aged 60+ can secure this property for up to 59% less, by purchasing a Lifetime Lease



50509323/20260202/KM/AA