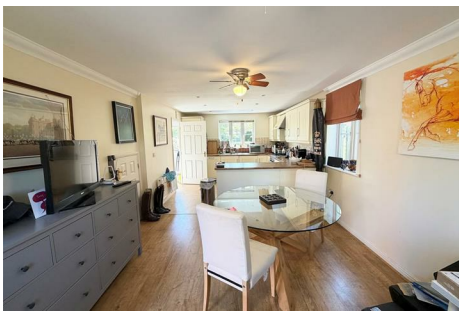




# GREENDOOR PROPERTY



## 4 Prince Charles Avenue Stotfold, Hitchin, SG5 4PN

Larger than average two bedroom modern semi-detached house in good order, situated on a quiet and popular development in Stotfold within close proximity of the A1(M). Modern fitted kitchen/with integrated appliances. Separate dining area. First floor lounge. Double bedrooms with built-in wardrobes. En-suite shower room and bathroom with shower over bath.

Gas central heating and double glazing. Approx. 75ft rear garden.

Wider than average garage with integral access and off road parking.

Available end of June 2026.

**£1,500 Per month**

# 4 Prince Charles Avenue

Stotfold, Hitchin, SG5 4PN



## Kitchen/Diner

23'7" x 11'3" (7.2 x 3.45)

## Lounge

14'5" x 12'1" (4.4 x 3.7)

## Bedroom 1

13'9" x 11'1" (4.2 x 3.4)

## Bedroom 2

8'2" x 11'5" (2.5 x 3.5)

## Ensuite

7'10" x 5'6" (2.4 x 1.7)

## Bathroom

6'10" x 5'10" (2.1 x 1.8)

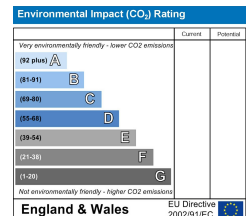
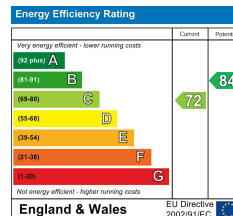


[Directions](#)



# Floor Plan

Every care has been taken with the preparation of these particulars, but complete accuracy cannot be guaranteed. If there is any point, which is of particular importance to you, please obtain professional confirmation. Alternatively, we will be pleased to check the information for you. These Particulars do not constitute a contract or part of a contract. All measurements quoted are approximate. The Fixtures, Fittings & Appliances have not been tested and therefore no guarantee can be given that they are in working order. Photographs are reproduced for general information and it cannot be inferred that any item shown is included in the sale.



  
**Green Door**  
 3 Maiden Street  
 Weston  
 Hitchin Hertfordshire,  
 SG4 7DG  
[info@greendoorpm.co.uk](mailto:info@greendoorpm.co.uk)  
 call 01462 510765  
[www.greendoorpm.co.uk](http://www.greendoorpm.co.uk)

