



View of block



**£249,995**

Jupiter House is a development of apartments for over 60's located in Walnut Tree on the East side of Milton Keynes. The apartment is on the ground floor and comprises a double bedroom with a walk in wardrobe, shower room with a double shower, front to back lounge with access to the communal gardens and a modern kitchen. The development offers secure access to the building with a house manager, a communal lounge with kitchen which is used for social events, scooter storage and a guest room available to book.

# Property Description

## **COMMUNAL ENTRANCE**

Doors to managers office, communal lounge with kitchen, scooter storage, guest room, refuse room and lift access. Door to:

## **ENTRANCE HALL**

Intercom, electric radiator, doors to storage cupboard containing washing machine, bedroom, bathroom and lounge/diner.

## **LOUNGE/DINER**

Double glazed door and window to patio area, door to kitchen, radiator.

## **KITCHEN**

Double glazed window to rear aspect. Range of wall mounted and floor standing units with work surface over, single drainer sink with mixer tap, integrated oven and microwave, integrated electric hob with extractor fan over, integrated fridge/freezer.

## **BEDROOM ONE**

Double glazed window to rear aspect. Electric radiator, door to walk in wardrobe, shelf units.

## **SHOWER ROOM**

Low level w.c., vanity wash hand basin, walk in shower, tiled floor, part tiled walls, heated towel rail.

## **OUTSIDE**

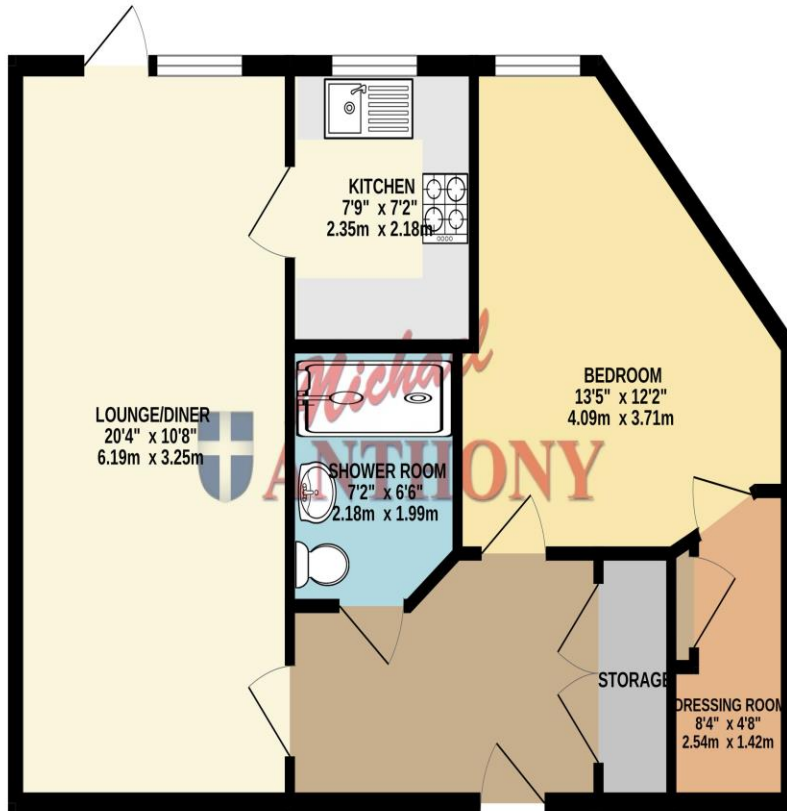
### **CARPARK**

Carpark with visitor bays.

### **COMMUNAL GARDEN**

Low level hedges, gravel leading to block paved seating area with raised flower and shrub beds.

GROUND FLOOR  
581 sq.ft. (54.0 sq.m.) approx.



Score	Energy rating	Current	Potential
92+	A		
81-91	B	85 B	85 B
69-80	C		
55-68	D		
39-54	E		
21-38	F		
1-20	G		

MONEY LAUNDERING REGULATIONS 2017 intending purchasers will be asked to produce identification and proof of financial status when an offer is received. We would ask for your co-operation in order that there will be no delay in agreeing the sale.

THE CONSUMER PROTECTION REGULATIONS 2008 The Agent has not tested any apparatus, equipment, fixtures and fittings or services and so cannot verify that they are in working order or fit for the purpose. A Buyer is advised to obtain verification from their Solicitor or Surveyor. References to the Tenure of a Property are based on information supplied by the Seller. The Agent has not had sight of the title documents. A Buyer is advised to obtain verification from their Solicitor. You are advised to check the availability of this property before travelling any distance to view. We have taken every precaution to ensure that these details are accurate and not misleading. If there is any point which is of particular importance to you, please contact us and we will provide any information you require. This is advisable, particularly if you intend to travel some distance to view the property. The mention of any appliances and services within these details does not imply that they are in full and efficient working order. These particulars are in draft form awaiting Vendors confirmation of their accuracy. These details must therefore be taken as a guide only and approved details should be requested from the agents