



Sophia Square, SE16

£450,000

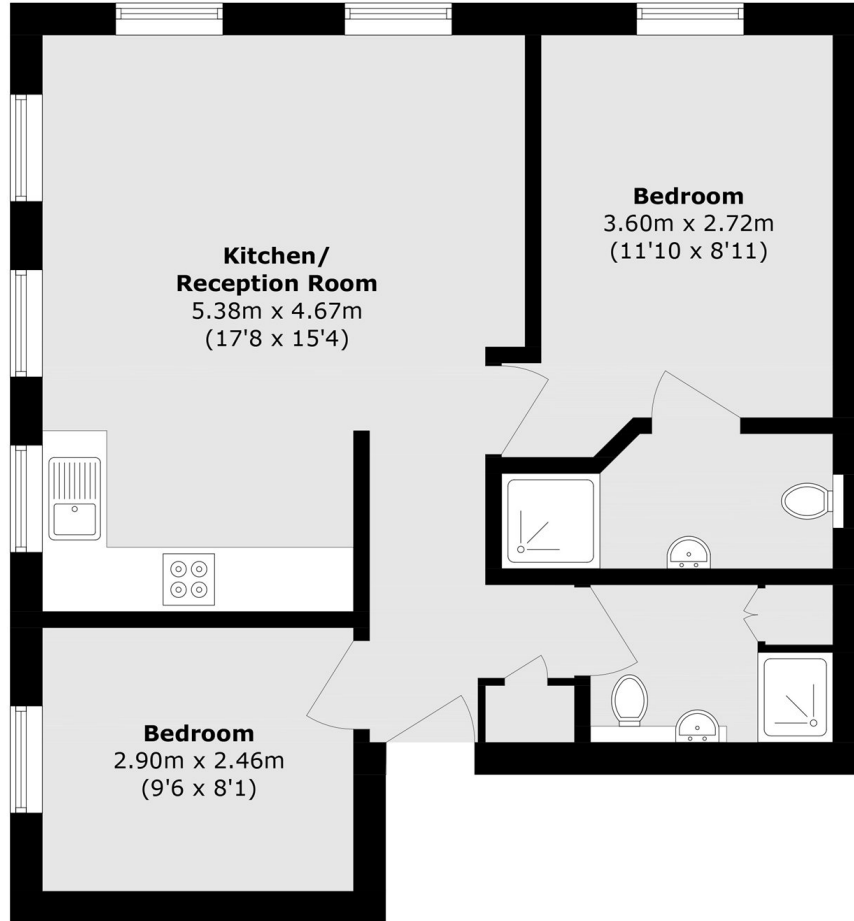
Situated in a riverside development, this bright and airy two bedroom flat is immaculately presented and has a family bathroom and en-suite bathroom, a large open plan kitchen and living room, ample storage and parking.

Sophia Square is located only 0.7 miles from Rotherhithe station and 0.8 miles from Canada Water station. The development is surrounded by shops, cafés, riverside pubs and restaurants.

Features

- Two Bedrooms
- Two Bathrooms
- River Views
- Secure Allocated Parking
- Chain Free
- Riverside Development

Sophia Square, London, SE16



First Floor

Total area (approx.): 52.7 sq. m (567.3 sq. ft)