



CHESTERFIELD GARDENS

A SPECTACULAR ONE BEDROOM APARTMENT IN A 24-HOUR
PORTERED BLOCK, IN THE HEART OF MAYFAIR



FINER DETAILS

This immaculate property offers a smart and sophisticated reception room with coffered ceiling, polished wood panelling and elegant silk wallpaper. The contemporary kitchen is finished with a marble worktop and full height splash back. There are integrated appliances herringbone flooring and a breakfast bar.

The bedroom is generously proportioned and benefits from a walk-in dressing room, providing excellent storage. A contemporary bathroom is located adjacent, with a walk-in shower, dual sinks and heated towel rail.

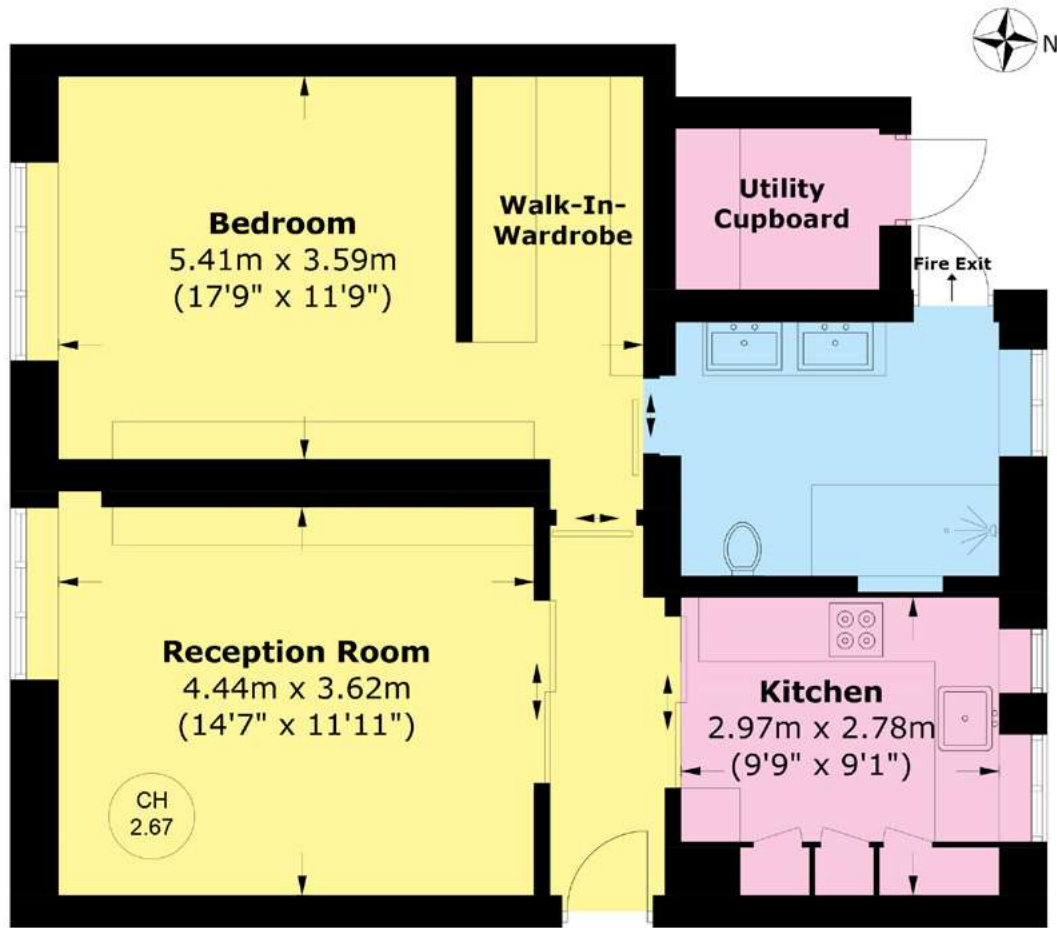
This apartment has been meticulously designed and renovated throughout, including a modern lighting system

that can be controlled from your phone, as well as air conditioning for additional comfort.

There is a porter and first-come, first-serve parking outside the property. The apartment also benefits from a separate storage/utility unit.

Situated in Chesterfield Gardens, a tree-lined quiet cul-de-sac, this purpose-built block is well located just off Curzon Street, moments from the open spaces of Hyde Park and the boutique shops of Mount Street. The nearest underground station is Green Park.





Ground Floor

TOTAL INTERNAL AREA (APPROX.) 641.5 SQ. FT (59.6 SQ. M)
 UTILITY CUPBOARD 30.1 SQ. FT (2.8 SQ. M)
 TOTAL AREA (APPROX.) 671.6 SQ. FT (62.4 SQ. M)

ONE BEDROOM
 TURN KEY
 24-HOUR PORTER
 AIR CONDITIONING

PRICE - £1,695,000

SERVICE CHARGE - £7,549 PER ANNUM, REVIEWED EVERY YEAR, NEXT REVIEW DUE 2027

GROUND RENT - £25 PER ANNUM

TENURE - SHARE OF FREEHOLD



WETHERELL
 MAYFAIR'S FINEST PROPERTIES

102 Mount Street, London, W1K 2TH
 020 7529 5566 • wetherell.co.uk

Wetherell have no authority to make or give any representations or warranties in relation to the property. These particulars do not form part of any offer or contract and must not be relied upon as statements or representations of fact. Any areas, measurements or distances are approximate. The text, photographs and plans are for guidance only and are not necessarily comprehensive. It should not be assumed that the property has all the necessary planning, building regulation or other consents and Wetherell have not tested any services, equipment or facilities. Purchasers must satisfy themselves by inspection or otherwise.
 EPC: C. April 2026.