

Tolcarne Drive

Pinner • • HA5 2DL
Asking Price: £450,000



coopers
est 1986

Tolcarne Drive

Pinner • • HA5 2DL

This bright and well-presented ground floor, two-bedroom garden maisonette is ideally located within the sought-after Harlyn Primary School catchment area and is just a short walk from Northwood Hills, offering a variety of shops, restaurants, coffee houses, and access to the Metropolitan Line Tube Station.

Ground Floor Garden Maisonette

Large Reception Room

Family Bathroom

No Onward Chain

Great School Catchment Area

Two Double Bedrooms

Modern Fitted Kitchen

Private Garden

Walking Distance to Northwood Hills

Apprix Area: 864 sq ft

These particulars are intended as a guide and must not be relied upon as statements of fact. Your attention is drawn to the Important Notice on the last page.





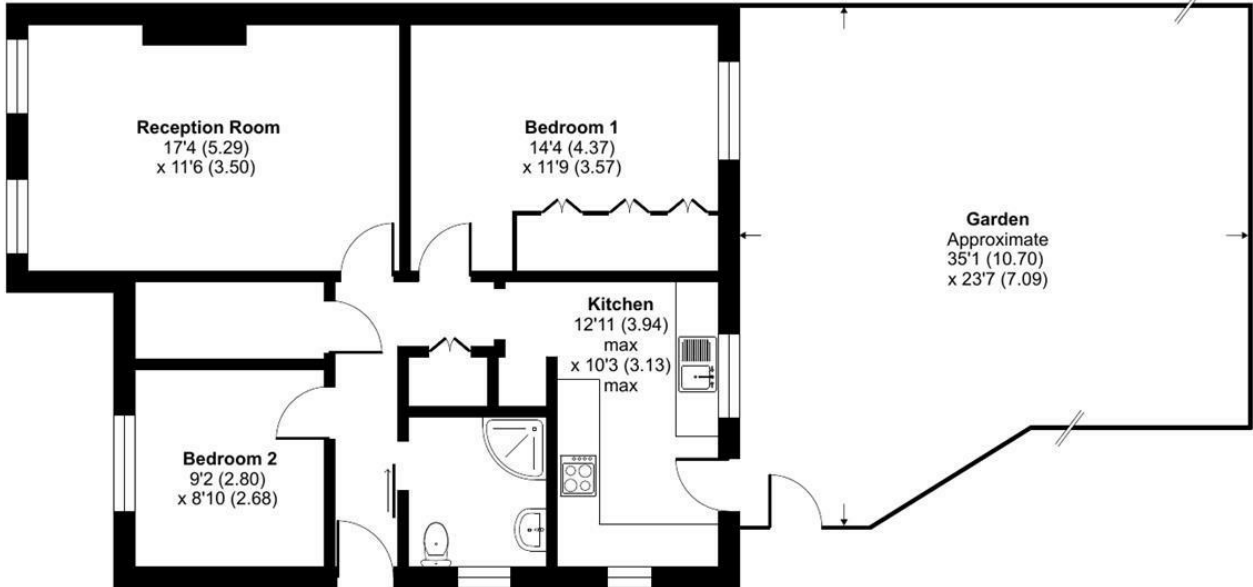
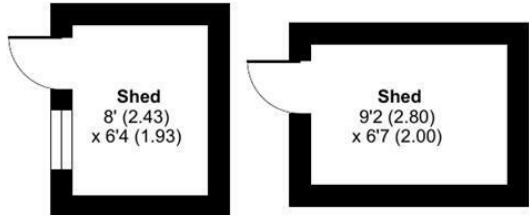
Tolcarne Drive, Pinner, HA5

Approximate Area = 744 sq ft / 69.1 sq m

Outbuildings = 110 sq ft / 10.2 sq m

Total = 854 sq ft / 79.3 sq m

For identification only - Not to scale



GROUND FLOOR



Floor plan produced in accordance with RICS Property Measurement 2nd Edition, Incorporating International Property Measurement Standards (IPMS2 Residential). © n/checom 2026. Produced for Coopers. REF: 1447347

coopers
est 1986



18 Bridge Street, Pinner,
Middlesex, HA5 3JF
pinner@coopersresidential.co.uk

CoopersResidential.co.uk

Energy Efficiency Rating		Current	Potential
Very energy efficient - lower running costs	A		
Energy efficient - lower running costs	B		
Decent energy efficiency - lower running costs	C		
Some energy efficiency - lower running costs	D		
Not very energy efficient - higher running costs	E		
Very poor energy efficiency - higher running costs	F		
Least energy efficient - highest running costs	G		
England & Wales		71	76

Important Notice: These particulars, whilst believed to be accurate are set out as a general outline only for guidance and do not constitute any part of an offer or contract. Intending purchasers should not rely on them as statements or representation of fact, but must satisfy themselves by inspection or otherwise has the authority to make or give any representation or warranty in respect of the property.