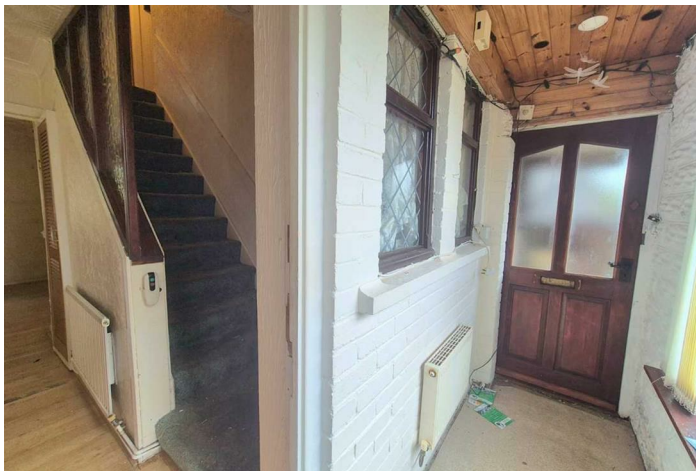


FREEHOLD



House - Semi-Detached (EPC Rating: D)

5 BRYN HEULOG, TREORCHY, CF42 5HB

£92,995



3 Bedroom House - Semi-Detached located in Treorchy

SEMI DETACHEDTHREE BEDROOMS***TWO RECEPTION ROOMS***NO CHAIN***

Osborne Estates are delighted to offer to the market this three-bedroom Semi-Detached Home in Treherbert, Rhondda Valleys. This spacious property offers an exciting opportunity for investors or those looking to add value. The home boasts two generous reception rooms, ideal for flexible living. Along with a well-proportioned kitchen and shower room with separate w/c. Boasting three good-sized bedrooms, perfect for families or tenants alike. Adding further appeal is a versatile attic space, offering excellent storage. Externally, the property benefits from a rear garden, with scope to create a lovely outdoor area. With excellent transport links, local amenities, and scenic surroundings, this property represents a fantastic opportunity to invest in one of the Rhondda's most up-and-coming areas. Don't miss out – contact us today to arrange a viewing!

Hall

9'8" x 3'1"

Image 1

Enter porch via Wood front door. Wood window to front. Central light fitting. Radiator. Power points.

Sitting Room

12'7" x 8'9"

Image 1

PVCU double glazed window to front. Papered decor finished to a textured ceiling with a central light fitting. Floor laid to laminate. Radiator. TV point. Power points. Open staircase. Under the stairs storage. Open staircase. Door through to lounge.

Sitting Room

Image 2

Lounge

16'7" x 9'0"

Image 1

PVCU double glazed window to rear. Papered decor finished to a textured ceiling with a central light fitting. Floor laid to laminate. Feature fire surround with inset gas fire. Radiator. Power points. Door through to kitchen.

Lounge

Image 2

Kitchen

19'5" x 6'2"

Image 1

PVCU double glazed door to Lean To. Wood windows to front and rear. Ceramic tiled decor finished to a textured ceiling with a central light fitting. Ceramic tiled flooring. A fully fitted kitchen with a range of matching wall and base units. Heat resistant work surface with inset sink and mixer taps. Built in hob and extractor fan. Radiator. Power points.

Kitchen

Image 2

Kitchen.

Image 3

Lean-To

16'5" x 4'1"

Image 1

Wood doors to front and rear. Ceramic tiled flooring. Power points.

Bedroom 1

13'0" x 10'3"

Image 1

PVCU double glazed window to front. Papered décor finished to a textured ceiling with a central light fitting. Fitted carpet. Built in wardrobes. Power points.

Bedroom 1

Image 2

Bedroom 2

13'9" x 8'9"

Image 1

PVCU double glazed window to rear. Papered decor finished to a textured ceiling with a central light fitting. Fitted carpet. Built in wardrobes. Power points. Open staircase allowing access to useful attic space.

Bedroom 2

Image 2

Useful Attic Space

17'3" x 10'2"

Image 1

Velux Roof Window. Textured ceiling. Wall light fitting. Laminate flooring. Eves storage. Power points.

Bedroom 3

10'3" x 5'9"

Image 1

PVCU double glazed window to front. Papered decor finished to a textured ceiling with a central light fitting. Fitted carpet. Built in wardrobes. Power points.



Bedroom 3

Image 2

Shower Room

5'7" x 5'3"

PVCU double glazed window to rear. PVC cladding decor. Floor laid to vinyl. Suite comprising of a walk-in shower and a vanity with hand basin. Radiator.

W/C

5'5" x 2'5"

Wood window to rear. Papered decor finished to a textured ceiling with a central light fitting. Floor laid to vinyl. Low level w/c.

Landing Area

Textured walls and ceiling finished to a textured ceiling with a central light fitting. Fitted carpet. Loft access. Doors to three bedrooms, shower room, separate w/c and storage cupboard.

Rear Garden

A fully enclosed rear garden. Garden shed.

Exterior

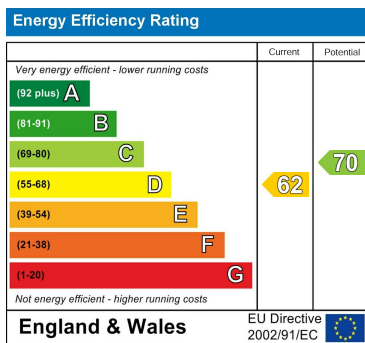
Exterior.



Council Tax Band

A

Energy Performance Graph



Call us on

01443 435599

sales@osborneestates.co.uk

osborneestates.co.uk

Agents Note: Whilst every care has been taken to prepare these particulars, they are for guidance purposes only. All measurements are approximate and are for general guidance purposes only and whilst every care has been taken to ensure their accuracy, they should not be relied upon and potential buyers are advised to recheck the measurements.

