

BRENNAN

BESPOKE



£350,000

William Street

Kettering, NN16 9RR

This double bay-fronted three bedroom period home built in 1906, positioned in a popular part of Kettering close to the Pleasure Park ideal for families and those who enjoy nearby green space for walking pets. William Street is well known locally for its strong community spirit creating a real neighbourhood feel while still being convenient for town amenities, schools, and transport links. Inside, the property offers a well-judged balance of modern living with retained original features, giving a mix of character and contemporary finish. The ground floor provides multiple reception spaces, allowing the layout to work for a range of lifestyles. A front lounge offers a comfortable space to relax, while the separate dining room is ideal for family meals, entertaining, or as a dedicated workspace if required. Moving through the home, the kitchen sits centrally and connects well with an additional sitting area to the rear, creating a practical flow for day-to-day living and giving buyers the option to use the rear section as a more informal family space, play area, or second reception room. Storage has been considered throughout, and the overall layout feels flexible without losing the charm expected from a property of this era. Upstairs, there are three bedrooms and a family bathroom, providing practical accommodation for families, guests, or those needing an extra room for home working. The main bedroom benefits from the bay-fronted aspect, adding to the sense of space and natural light, while the remaining bedrooms offer useful flexibility for children, visitors, or hobbies. Outside, the courtyard garden is private and low maintenance, making it easy to enjoy without the upkeep of a larger plot. A key advantage is the double gate access, which is ideal for secure storage and suitable for bringing in a small vehicle or motorbike, as well as bikes, bins, or garden equipment

3



1



2





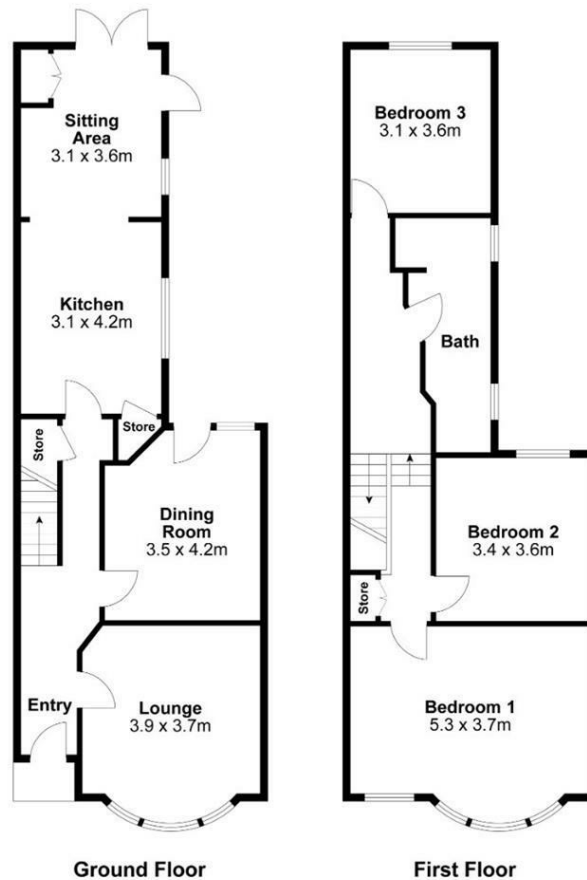
BRENNAN
BESPOKE

OFFICE ADDRESS

BRENNAN BESPOKE
2 The Tithe Barn Glendon Lodge Farm
Glendon
Kettering
Northamptonshire
NN14 1QF

OFFICE DETAILS

01536 904400
info@brennanbespoke.co.uk
<https://www.brennanbespoke.co.uk>



For identification only not to scale

Internal Area Approx. : 137m²

BRENNAN
BESPOKE

LOCAL AUTHORITY
North Northamptonshire

TENURE
Freehold

COUNCIL TAX BAND
C

VIEWINGS
By prior appointment only

Energy Efficiency Rating		Current	Potential
<i>Very energy efficient - lower running costs</i>			
(92 plus)	A		
(81-91)	B		
(69-80)	C		76
(55-68)	D	61	
(39-54)	E		
(21-38)	F		
(1-20)	G		
<i>Not energy efficient - higher running costs</i>			
England & Wales		EU Directive 2002/91/EC	

Agents Note: Whilst every care has been taken to prepare these particulars, they are for guidance purposes only. All measurements are approximate and are for general guidance purposes only and whilst every care has been taken to ensure their accuracy, they should not be relied upon and potential buyers/tenants are advised to recheck the measurements