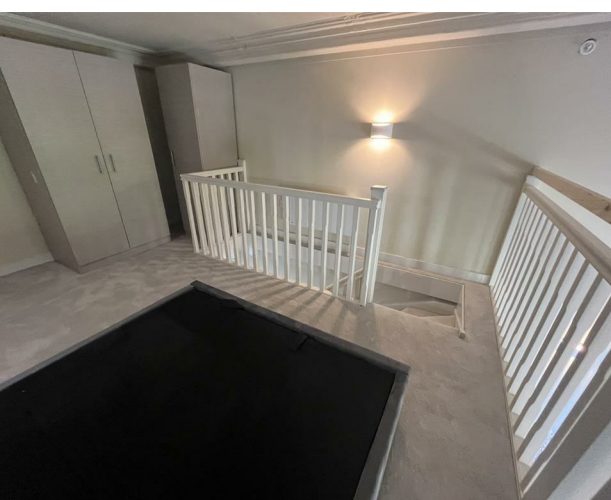


APT 13 - Athenaeum Residence, 147 - 157 The Headrow,  
leeds, LS1 5EW  
£1,300 Per month

**V&L**  
PROPERTIES





## APT 13 - Athenaeum Residence, 147 - 157 The Headrow, Leeds, LS1 5EW

£1,300 Per month

Council Tax Band:

Nestled in the heart of Leeds, this charming one-bedroom apartment at 147A The Headrow offers a delightful urban living experience. Situated on the second floor at the rear of the building, this property provides a peaceful retreat while still being conveniently close to the vibrant city centre.

The apartment features a well-appointed bedroom, perfect for relaxation after a busy day. The bathroom is designed with modern fixtures, ensuring comfort and convenience. Although the property spans a compact area, it is thoughtfully designed to maximise space and functionality, making it an ideal choice for individuals or couples seeking a stylish home in a bustling environment.

Living at The Headrow means you are just a stone's throw away from an array of shops, restaurants, and cultural attractions that Leeds has to offer. Whether you fancy a leisurely stroll through the city or a night out at one of the local eateries, everything is within easy reach.







22 Regent Street  
Leeds  
LS2 7QA  
01133 225737  
info@vgl-properties.co.uk  
vgl-properties.co.uk

Energy Efficiency Rating		
	Current	Potential
Very energy efficient - lower running costs		
(92 plus) <b>A</b>		
(81-91) <b>B</b>		
(69-80) <b>C</b>		
(55-68) <b>D</b>		
(39-54) <b>E</b>		
(21-38) <b>F</b>		
(1-20) <b>G</b>		
Not energy efficient - higher running costs		
England & Wales		EU Directive 2002/91/EC 