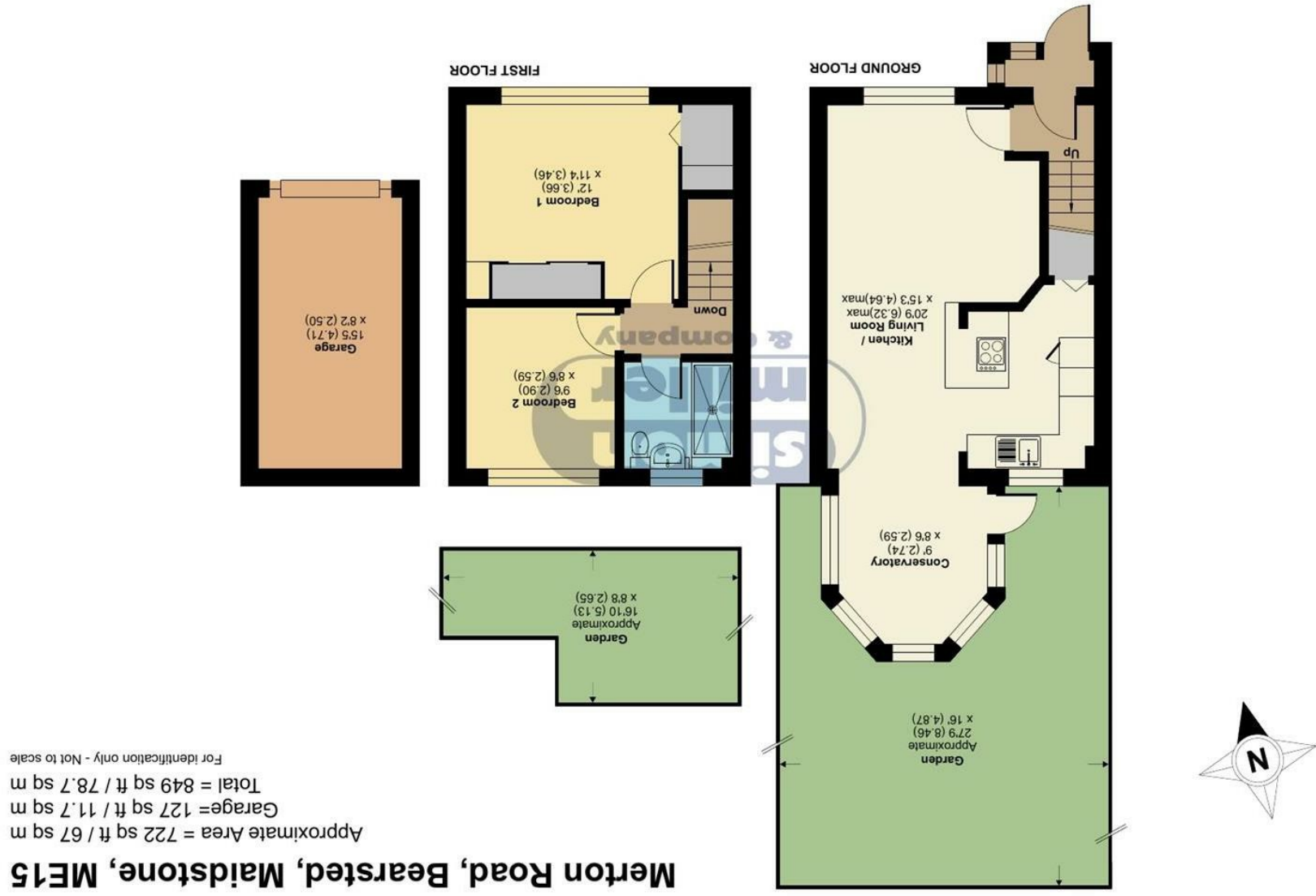


Floor plan produced in accordance with RICS Property Measurement 2nd Edition, incorporating International Property Measurement Standards (IPMS2 Residential). © nchecom 2026. REF: 1435860



101 Merton Road, Maidstone, ME15 8LR

Asking Price £310,000
 EPC RATING: C





Situated on Merton Road in the charming area of Madginford, this delightful two-bedroom end-terraced family home offers a perfect blend of modern living and comfort. Built in the 60's, the property has been beautifully presented throughout, making it an inviting space for families and professionals alike.

Upon entering, you will be greeted by an open-plan layout on the ground floor, which creates a spacious and airy atmosphere, ideal for both relaxation and entertaining. The additional conservatory enhances the living space, allowing for an abundance of natural light and a seamless connection to the outdoors.

The landscaped rear garden is a true highlight, featuring a secret garden that provides a tranquil retreat for those seeking a bit of peace and quiet. This outdoor space is perfect for family gatherings, gardening enthusiasts, or simply enjoying a sunny afternoon.

For added convenience, the property includes a garage en bloc, with off-street parking available in front, ensuring that you will never have to worry about finding a parking space.

Located in a popular area, this home is within walking distance to the picturesque Mote Park, offering a variety of recreational activities and beautiful green spaces for leisurely strolls or family outings.

MATERIAL INFORMATION

Freehold
Council Tax Band C
EPC Report C



• Two Bedroom End Terraced Family Home • Open Plan Accommodation To The Ground Floor • Additional Conservatory • Beautifully Presented Throughout • Landscaped Rear Garden With Additional Secret Garden • Garage En Bloc With Off Street Parking Infront • Popular & Sought After Madginford Location • Walking Distance To Mote Park & Local Shops With Easy Access To Maidstone Town Centre

Agents Note: All dimensions are approximate and quoted for guidance only. Reference to appliances, fixtures, fittings and services does not imply that they are necessarily in good condition, fit the purpose or are in working order. Interested parties are advised to obtain verification from their Solicitors as to the Freehold/Leasehold status of the property and confirmation regarding the condition of any fixtures and fittings included in the sale.

11, COLMAN HOUSE, MAIDSTONE, KENT, ME14 1DJ | 01622 691255 | MAIDSTONESALES@SIMONMILLER.CO.UK