



Putney Hill, SW15

£499,950

Dexters



Putney Hill, SW15

A beautifully presented two-bedroom apartment set on the top floor of a well-maintained purpose-built block on Putney Hill, offering over 950 sq. Ft. Of accommodation with a private balcony and lift access.

The property comprises a generous reception room with ample space for both living and dining, enhanced by large windows and doors opening to a balcony with leafy views. The separate modern kitchen is fitted with a range of white cabinets, integrated appliances, and plentiful worktop space.

There are two excellent double bedrooms, including a superb principal bedroom, both bright and spacious, with fitted storage potential. A contemporary bathroom and additional WC complete the accommodation.

Chalford Court is ideally located in quiet location off Putney Hill, just moments from the wide open spaces of Putney Heath and Wimbledon Common, as well as the shops, cafés, and restaurants of Putney High Street. Excellent transport links are close by, with Putney mainline station (Waterloo in approx. 15 minutes) and East Putney Underground (District Line) both within easy reach. There are also frequent bus services from Putney Hill into Central London and beyond.

Features

Two double bedrooms

952 sq. ft.

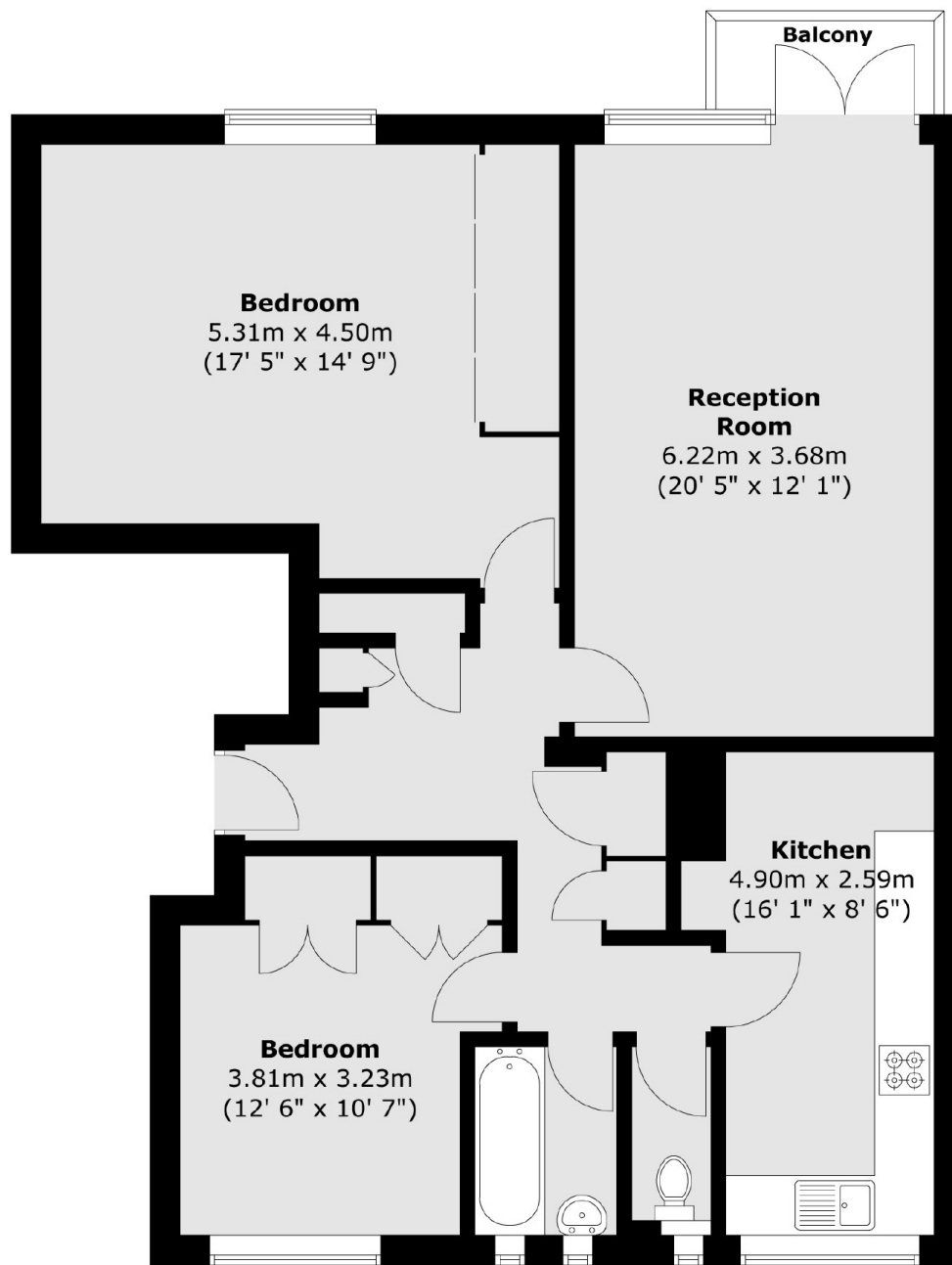
Balcony







Putney Hill, London, SW15



Total area (approx.) : 88.4 sq. m (952 sq. ft)
Total balcony area (approx.) : 2.1 sq. m (23 sq. ft)