



**Price**  
**£425,000**

**Leasehold**

2x  1x  1x 

**Bevan Court, Tallack  
Road, Leyton, E10**

**OVER 60?**

Secure this property  
for up to **59% less!**

 **DOUGLAS  
ALLEN**  
Helping you move forwards



## Main features

- Beautiful top floor apartment
- Chain-free
- Private wrap around balcony with skyline views
- Communal gardens and shared roof terrace
- Fantastic transport links to Leyton station & Walthamstow Central

## Accommodation

### FOURTH FLOOR

Lounge/Kitchen/Dining Room:  
(L-shaped) 26'6 x 8'8 (8.08m x 2.64m) plus 14'7 x 9'1 (4.45m x 2.77m)

Bedroom 1: 12'10 x 11'9 (3.91m x 3.58m)

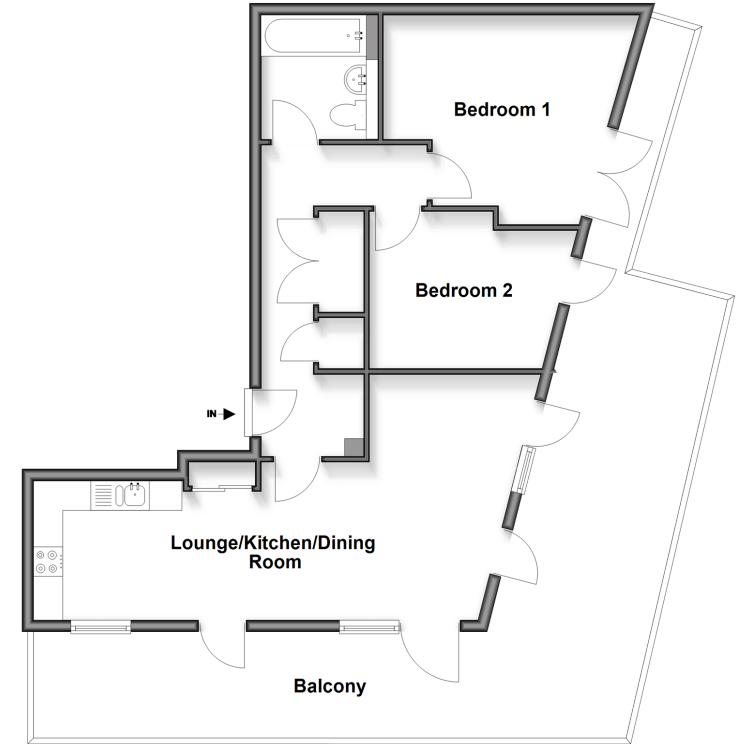
Bedroom 2: 9'4 x 8'7 (2.85m x 2.62m)

Bathroom: 7'2 x 6'4 (2.19m x 1.93m)

### OUTSIDE

- Wraparound balcony
- Communal gardens
- Shared roof terrace

**Fourth Floor**  
Approx. 61.5 sq. metres (662.4 sq. feet)  
(excluding Balcony)



Call Walthamstow - 020 8509 0092 ■ [douglasallen.co.uk](http://douglasallen.co.uk)

- A private rental licensing scheme applies to some properties in this area, please check with the Local Authority before proceeding
- Through a Homewise Home For Life Plan people aged 60+ can secure this property for up to 59% less, by purchasing a Lifetime Lease



53117811/20260325/AR/RUM