

HIO



Quadrella Gardens, 129 Fernbank Road
£325,000

OSBORNE HEATH



This modern first floor apartment consists of an open plan living and dining space with a fully integrated kitchen. The apartment also has two double bedrooms and two bathrooms with one of them being an en-suite to the principal bedroom. Within the apartment you also have a balcony which is accessed from the living room through the double doors.

Quadrella Gardens has a secure entry system and the parking is in a gated parking area and offers two spaces.

Quadrella Gardens is off Fernbank Road, close to Ascot Racecourse. The nearest train station is Ascot where services run to London Waterloo, Reading and Guildford. By road Ascot is convenient for the M3, M4, M25 and Heathrow Airport. Other than Ascot Racecourse other local places of interest include Coworth Park, The Berkshire Golf Club, Guards Polo Club, Legoland, Sunningdale Golf Club, Wentworth Club, Windsor Castle and Windsor Great Park.

Quadrella Gardens

Ascot

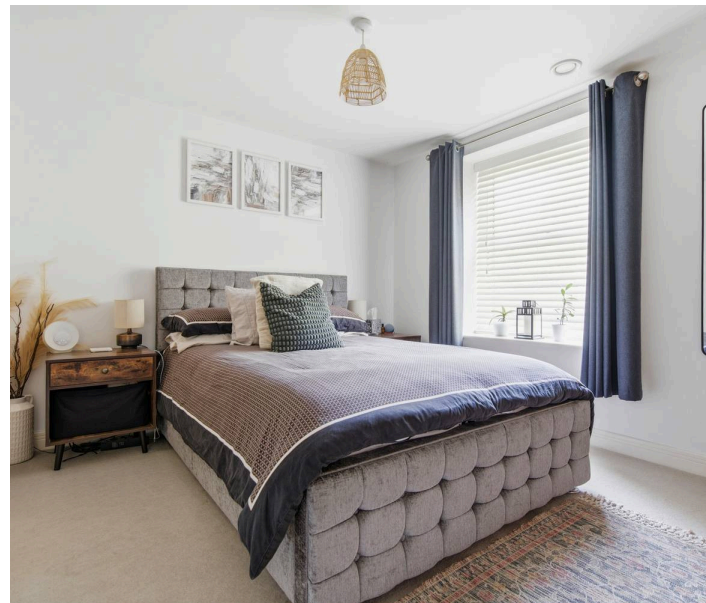
- Two Double Bedrooms
- Two Bathrooms
- Modern Apartment
- Balcony
- Two Parking Spaces
- Gated
- Underfloor Heating
- Bike Storage

Council Tax band: C

Tenure: Leasehold

EPC Energy Efficiency Rating: B

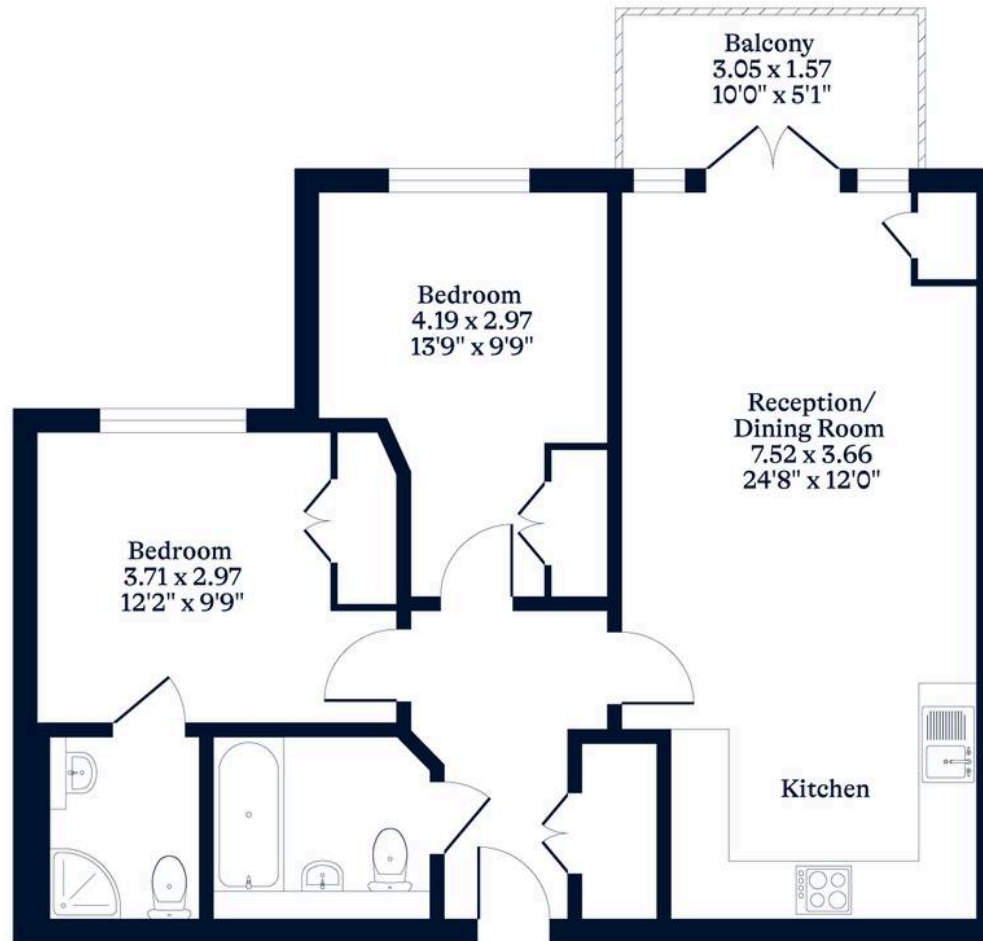
EPC Environmental Impact Rating: B



APPROXIMATE FLOOR AREA
Apartment - 65.70 sq m - 707 sq ft
(Gross Internal Area)



NOT TO SCALE
This plan is for illustration purposes only



First Floor

OSBORNEHEATH.CO.UK

This floor plan has been created by Property Shoot Ltd following the RICS code of measuring and is for indicative guidance only. Whilst every attempt has been made to ensure the accuracy of the floor plan contained here, measurements of doors, windows and rooms are approximate and no responsibility is taken for any error, omission or misstatement.

Details shown on this floorplan, including all measurements, areas and proportions cannot be guaranteed by either the provider or estate agency and should not be relied upon.