



## LEIGHTON GARDENS, NW10

£550,000

Two Double Bedrooms  
First Floor Conversion  
South Facing Reception  
Original Features  
Potential To Extend  
Quiet Residential Street

@marshandparsons  
marshandparsons.co.uk

MARSH &  
PARSONS



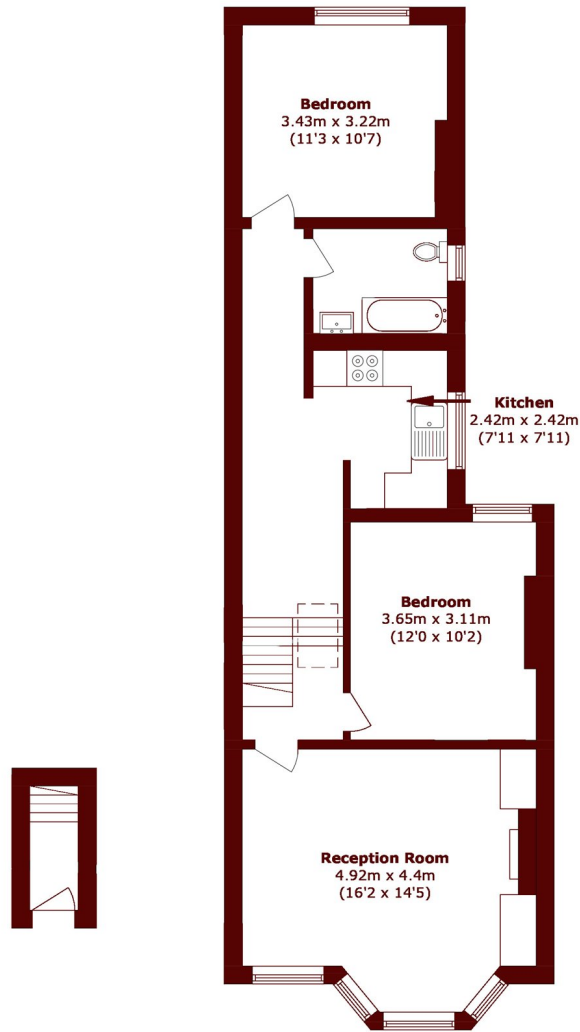
# ABOUT THE PROPERTY

This impressive property occupies the first floor of an attractive Victorian building, boasting spacious and bright accommodation throughout. Leighton Gardens features a charming reception room with bay window, separate modern kitchen, two double bedrooms and bathroom, with the lease in the process of being extended.

Leighton Gardens is a quiet residential street, superbly positioned within easy reach of a variety of transport links, shops, cafés and restaurants on College Road and Chamberlayne Road. Local transport links include Kensal Rise (London Overground) and Kensal Green (Bakerloo Line and London Overground)



# STEP INSIDE LEIGHTON GARDENS



**Ground Floor**

**First Floor**

Total area (approx.): 68.2 sq. m (734.1 sq. ft)

Queen's Park  
020 7624 4513

Energy Rating: We aim to make our particulars both accurate and reliable. However, they are not guaranteed; nor do they form part of an offer or contract. If you require clarification on any points then please contact us, especially if you're traveling some distance to view. Please note that appliances and heating systems have not been tested and therefore no warranties can be given as to their good working order

MARSH &  
PARSONS