



STREATHAM HIGH ROAD, SW16

£425,000

- High spec
- Secure gated development
- Mansion block
- Close to transport links
- Two double bedrooms
- Energy rating: D





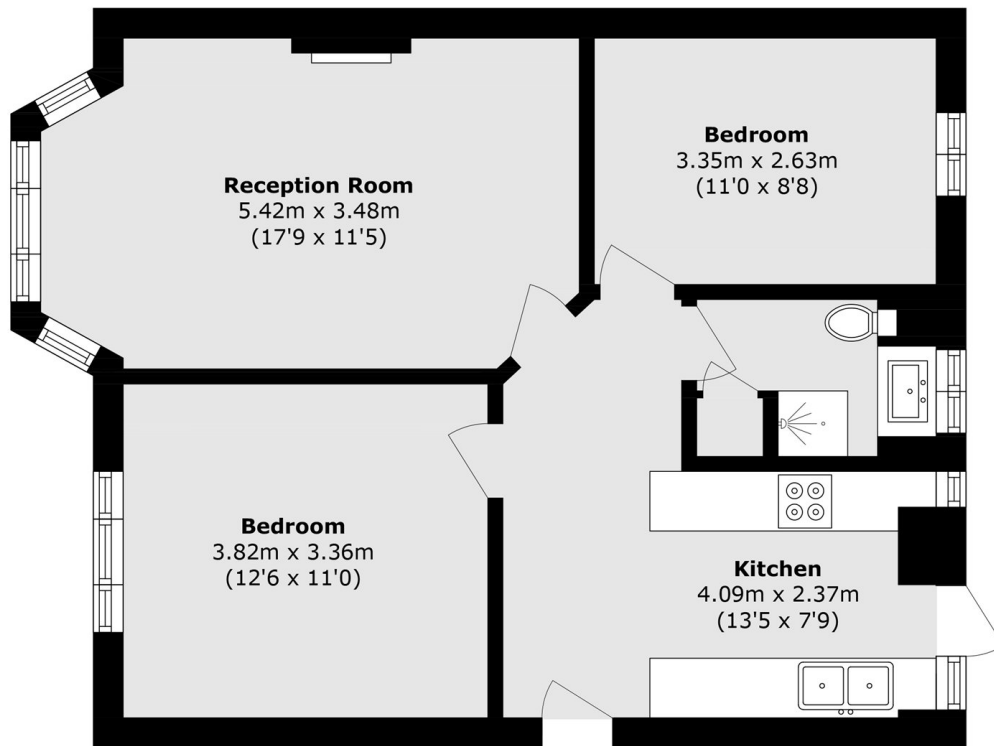
ABOUT THE HOME

A beautifully presented two bedroom mansion apartment offering two well proportioned bedrooms, a lovely bathroom suite and a spacious reception room, situated within a gated development moments away from Streatham Hill station.

Streatham Court is situated in close proximity to Streatham Hill train station providing easy access to London Bridge and London Victoria via Clapham Junction. The shops, bars and restaurants of Streatham High Road and the many bus routes to Brixton and The City are on your door step.







Total area (approx.): 57.8 sq. m (622.1 sq. ft)

JACKSONS STREATHAM

1-3 De Montfort Parade,
Streatham High Road,
Sales: 020 8487 3179
Lettings: 020 8487 3180

Energy Rating: D We aim to make our particulars both accurate and reliable. However they are not guaranteed; nor do they form part of an offer or contract. If you require clarification on any points then please contact us, especially if you're traveling some distance to view. Please note that appliances and heating systems have not been tested and therefore no warranties can be given as to their good working order.