



## Roydene Road, SE18

### £485,000

A beautifully appointed three bedroom terraced home that balances period character with contemporary design. This home has been thoughtfully decorated by architect owners, creating a space that feels both stylish and functional.

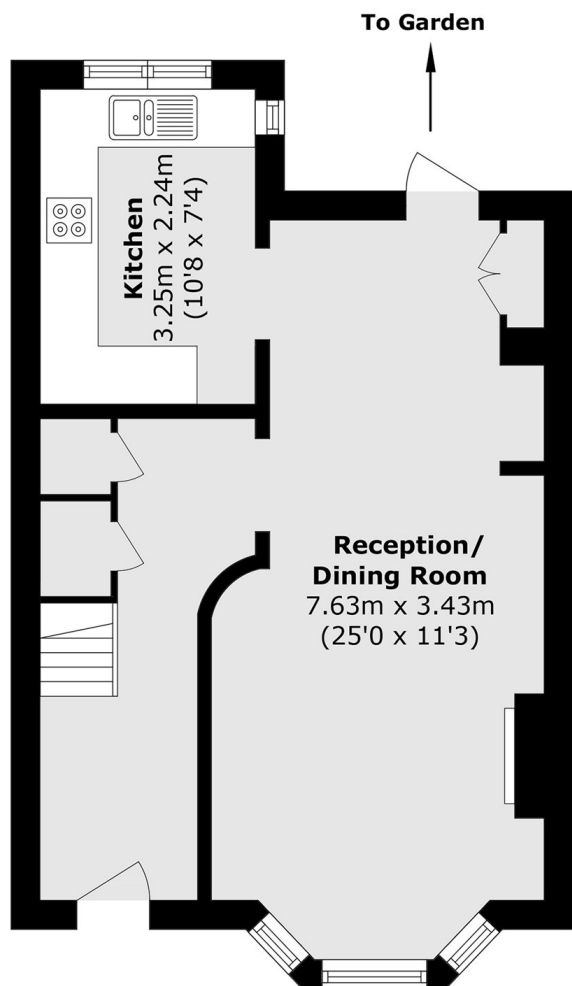
The ground floor is arranged around an impressive 25 ft open-plan reception and dining space, with a contemporary kitchen positioned to the rear and direct access out to the garden. The living space is well proportioned, with a wide bay window to the front and a natural flow through to the rear, creating a bright and sociable layout. Upstairs, the first floor provides three well-balanced bedrooms, including two generous doubles and a third ideal as a home office or nursery, along with a stylish family bathroom set centrally off the landing.

Roydene Road is well positioned for the open green spaces of Oxleas Wood, Shrewsbury Park and Severndroog Castle, all offering excellent walking routes and views. Local shops and amenities can be found nearby in Plumstead and Woolwich, with a wider selection of cafés, restaurants and leisure facilities in Woolwich town centre. Excellent transport links are close at hand, including overground links and the Elizabeth line, providing fast access into Canary Wharf, the City and the West End.

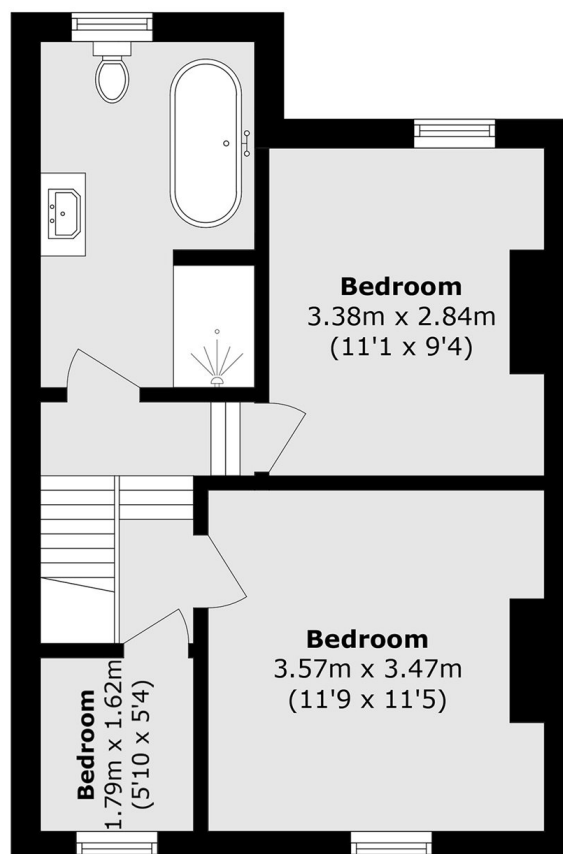
### Features

Three Bedrooms  
Beautifully Presented  
Quiet Residential Road  
Close To Transport Links  
Terraced Victorian House  
Potential To Extend (STPP)

# Roydene Road, London, SE18



**Ground Floor**



**First Floor**

Total area (approx.): 79.8 sq. m (859.0 sq. ft)