

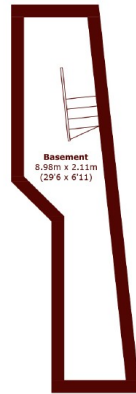


## Oxford Road South, W4

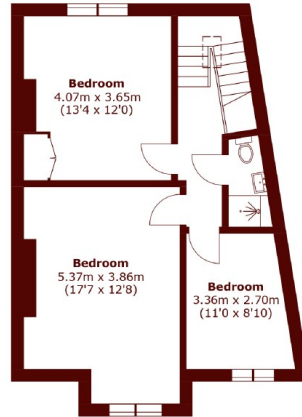
£1,500,000

6 2 2 E

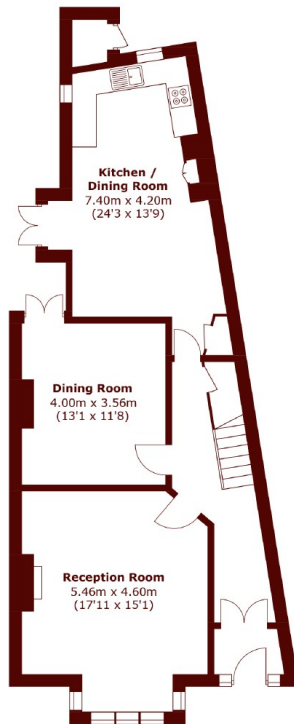
- Six Bedrooms
- Two Reception Rooms
- Large Private Garden
- Victorian House
- Freehold
- No Chain



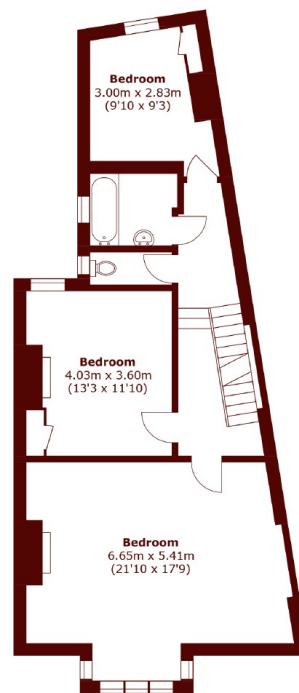
**Basement**



**Second Floor**



**Ground Floor**



**First Floor**

Total area (approx.): 217.5 sq. m (2,341.1 sq. ft)  
(Including Basement)  
External Cupboard: 1.1 sq. m (11.8 sq. ft)

## Marsh & Parsons Chiswick

34-38 Turnham Green  
Terrace, London, W4 1QP  
020 8994 2556