



## Main Road, Portskewett

2 Bedrooms  
1 Bathrooms  
2 Receptions

£280,000



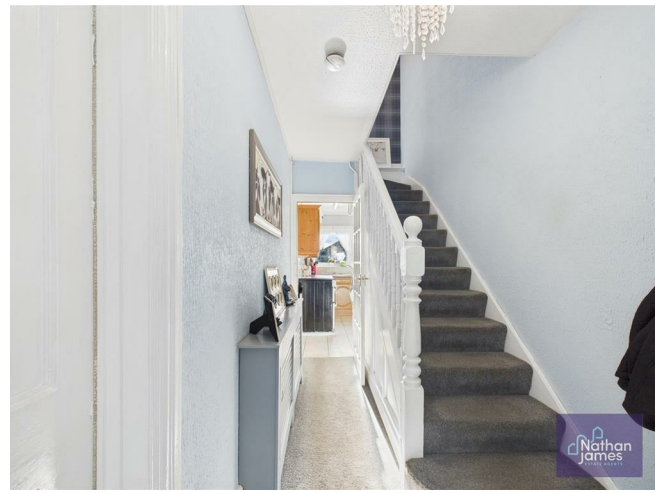
Located on Main Road in Portskewett, this delightful house presents an excellent opportunity for those seeking a comfortable and convenient home. With two well-proportioned reception rooms, this property offers ample space for both relaxation and entertaining. The inviting cottage atmosphere is perfect for family gatherings or quiet evenings in.

The house features two well proportioned bedrooms, providing a peaceful retreat for rest and relaxation. The layout is thoughtfully designed to maximise space and light, ensuring a warm and welcoming environment throughout. The bathroom is conveniently located, catering to the needs of modern living. There is an additional w/c on the ground floor.

The property features off road driveway parking for one vehicle. The charming rear garden is primarily laid to lawn with established border planting and a sunny patio area.

Portskewett is a delightful village that boasts a friendly community and a range of local shops and services. With easy access to nearby Caldicot and Chepstow and excellent transport links, this location is ideal for those who appreciate both tranquillity and connectivity.

In summary, this house on Main Road is a wonderful opportunity for anyone looking to settle in a charming area with all the essential comforts. Whether you are a first-time buyer, a small family, or looking to downsize, this property is well worth a visit.



Dining Room  
10'9x10'1

Lounge  
12'3x11'7

Kitchen  
5'6x10'0

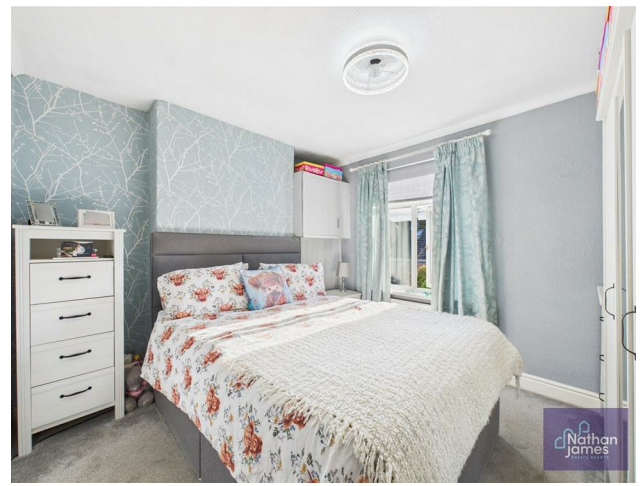
Hallway  
5'5x11'5

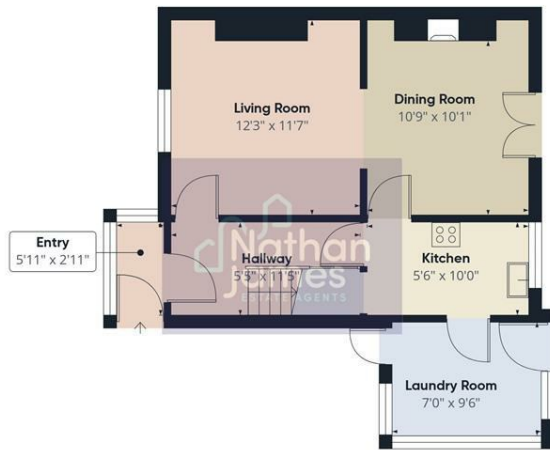
Utility room  
7x9'6

Bedroom  
12'3x11'6

Bedroom  
11'1x10'2

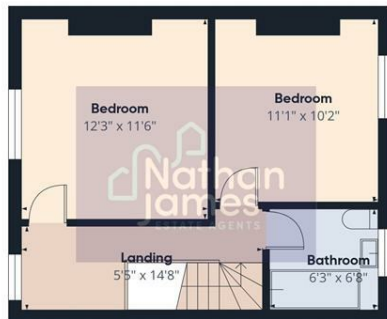
Bathroom  
6'3x6'8





Floor 0

Approximate total area<sup>1)</sup>  
822 ft<sup>2</sup>

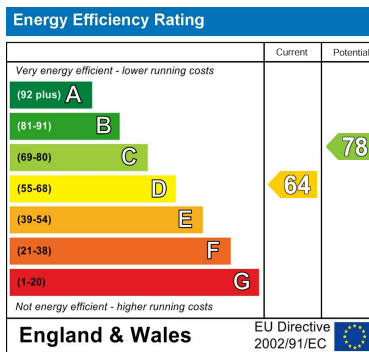


Floor 1

(1) Excluding balconies and terraces

Calculations reference the RICS IPMS 3C standard. Measurements are approximate and not to scale. This floor plan is intended for illustration only.

GIRAFFE360



8 Newport Road  
Caldicot  
Monmouthshire  
NP26 4HX  
01291 421600

nj@nathanjamesestateagents.co.uk  
nathanjamesestateagents.com