

# JK CapInvest



**£460,000 (Asking Price)**

**Hookfield, Harlow**  
**Essex, CM18**

## KEY FEATURES

- Corner Mid-Terrace House
- Massive Rear Garden
- Four Bedrooms
- Conservatory
- Property Band C
- Harlow Council
- 1,285 sqft.
- EPC C

## JK Prime Residential

Phone:  
+44 (0) 7392 282 397

Email:  
sales@jkcainvest.com



## ABOUT

---

Four Bedroom Home

---

Quiet Cul de Sac

---

Large Rear Garden

---

Corner Mid-Terrace Position

---

Spacious Family Lounge

---

Large Fully Fitted Kitchen

---

Conservatory

---

Close to Excellent Schools  
& Amenities

---

Excellent Transport Links-  
M11, Epping, Stansted &  
Liverpool Station



## THE PROPERTY

JK CapInvest proudly presents this spacious four-bedroom corner mid-terraced family home in the sought-after Hookfield area of Latton Bush, Harlow.

Ideally located with easy access to local shops, amenities, and top schools like William Martin Primary and Sir Frederick Gibberd College. Commuters benefit from close proximity to the M11, linking to Epping, Bishop's Stortford, Stansted Airport, and Liverpool Street station. Nearby parks, including Town Park and Parndon Wood Nature Reserve, enhance family living.

The ground floor offers a welcoming porch, bright family lounge, fitted kitchen/diner, guest WC, and a superb conservatory overlooking the garden. Upstairs features four generous bedrooms and a family bathroom. A large rear garden is perfect for outdoor fun and entertaining. Don't miss this ideal family home—contact JK CapInvest



[sales@jkcainvest.com](mailto:sales@jkcainvest.com)

+44 (0) 7392 282 397

Viewing: Strictly by appointment with JK CapInvest Ltd.

Important Notice: *Any areas, measurements or distances are approximate. The text, photographs and plans are for guidance only and are not necessarily comprehensive.*

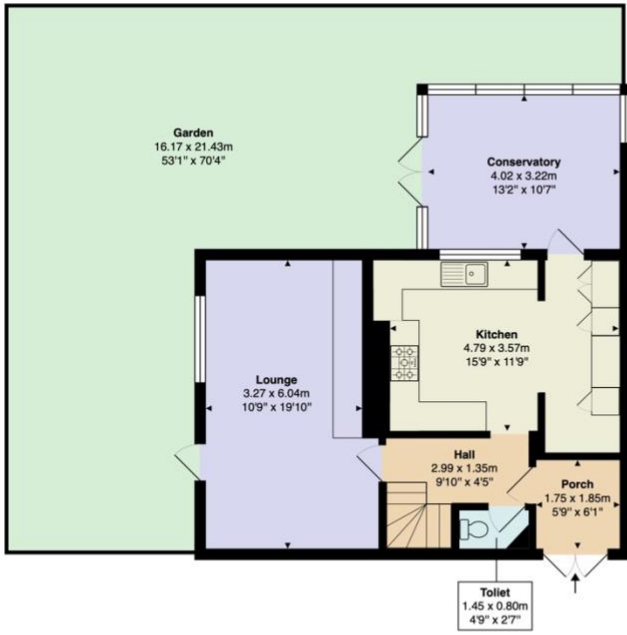


[sales@jkcainvest.com](mailto:sales@jkcainvest.com)

+44 (0) 7392 282 397

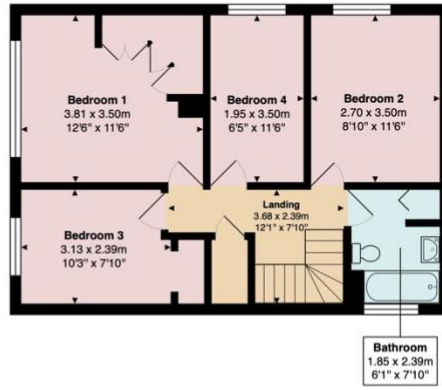
Viewing: Strictly by appointment with JK CapInvest Ltd.

Important Notice: *Any areas, measurements or distances are approximate. The text, photographs and plans are for guidance only and are not necessarily comprehensive.*



175 Hookfield, Harlow, CM18 6QW

Total Gross Internal Area: 119.40 sq m / 1285.21 sq ft  
 Garden: 272.39 sq m / 2931.98 sq ft  
 Total: 391.79 sq m / 3442.19 sq ft



All measurements are approximate and for display purposes only.  
 ©essexpropertyphotography.co.uk



Score	Energy rating	Current	Potential
92+	A		
81-91	B		85 B
69-80	C	70 C	
55-68	D		
39-54	E		
21-38	F		
1-20	G		



sales@jkcinvest.com  
 +44 (0) 7392 282 397

Viewing: Strictly by appointment with JK CapInvest Ltd.

Important Notice: Any areas, measurements or distances are approximate. The text, photographs and plans are for guidance only and are not necessarily comprehensive.