



Strawberry Vale, TW1

£2,600,000

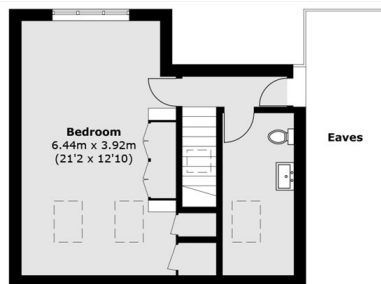
This exceptional semi-detached family home features a generous garden that backs directly onto the River Thames, with private mooring for two boats. Set across three floors, the property offers five spacious bedrooms, a wrap-around kitchen and dining area, a separate utility room, a front-facing family reception room, and off-street parking for several vehicles.

Strawberry Vale is a sought-after location in Twickenham, just a short stroll from the river, beautiful walking routes, and local green spaces like Radnor Gardens and Marble Hill Park. It's well served by nearby bus routes and around a 15-minute walk to Twickenham Station, which offers direct trains to London Waterloo.

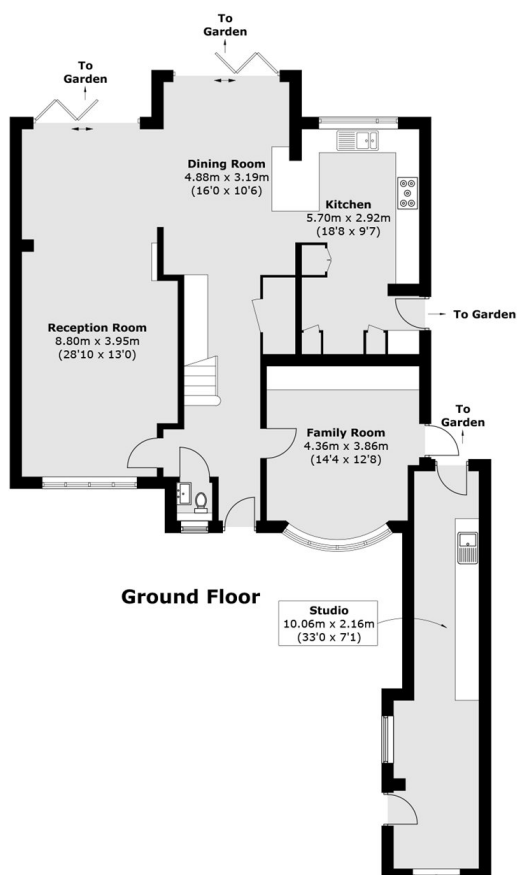
Features

- Off Street Parking
- Direct River Views
- Semi Detached
- Large Garden
- Residential Mooring
- Five Bedrooms

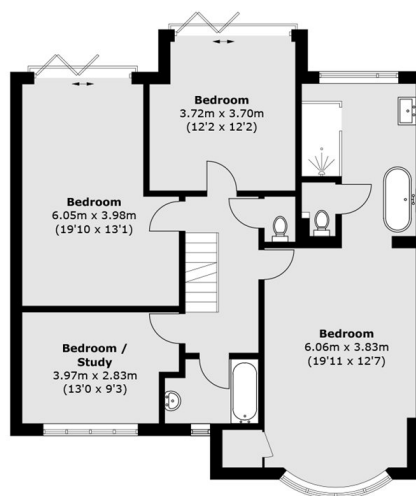
Strawberry Vale, Twickenham, TW1



Second Floor



Ground Floor



First Floor

Approx Internal Area: 236.2 sq. m (2,542.4 sq. ft)
(Excluding Eaves)
Studio: 19.0 sq. m (204.5 sq. ft)
Total: 255.2 sq. m (2,746.9 sq. ft)