



Templar Court

43 St. John's Wood Road, NW8

£6,500 per month
(£1,500 per week)

A beautiful three bedroom apartment (1,610 sq. ft /149 sq. m) with a balcony situated on the fourth floor of this modern purpose built building.

CHESTERTONS



Templar Court

43 St. John's Wood Road, NW8

- Sixth Floor Flat
- 3 Bedrooms, 2 Bathrooms
- Porter, Lift, Parking
- Close to St John's Wood High Street

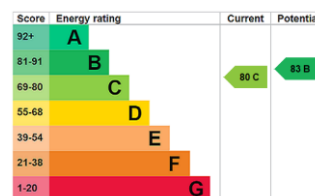


Sole Agent. A beautiful 3 bedroom apartment (1,610 sq. ft /149 sq. m) with a balcony situated on the 4th floor of this modern purpose built building.

The property is offered in superb decorative condition throughout and boasts a 29ft south facing reception/dining room, 16ft kitchen/breakfast room, 3 double bedrooms, guest WC and a balcony with views across the London skyline.

Templar Court is located close to both Lord's Cricket Ground and the multiple shops and cafes of Little Venice. The building has 24 hour porteraqe, 2 passenger lifts, secure underground parking and a

Minimum Term: 12 months
Deposit Required: £7,500.00
Local Authority: City Of Westminster
Council Tax Band: H
EPC Rating: C
Furnished, Part Furnished

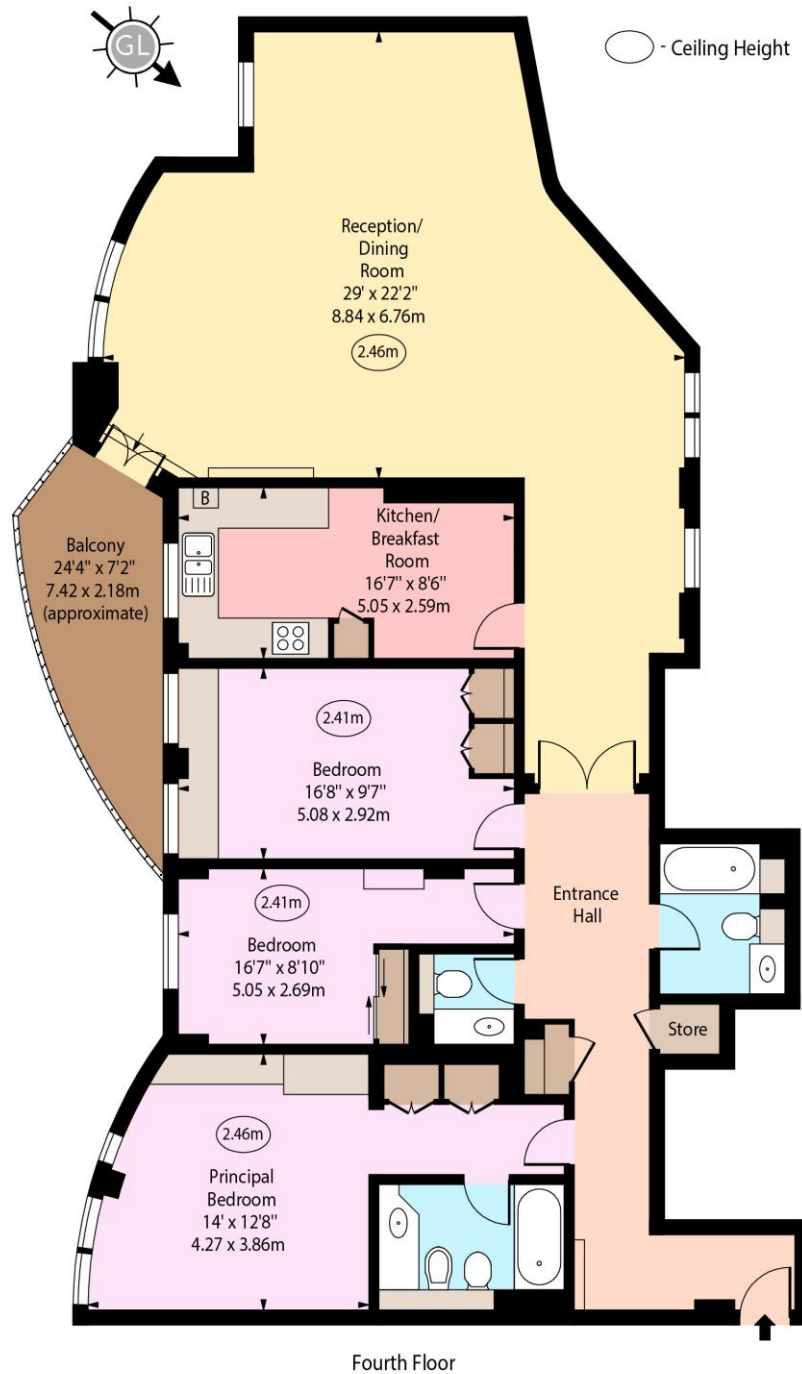


Chestertons St John's Wood Lettings

105 St. John's Wood Terrace
 London
 NW8 6PL
 stjohslettingsusers@chestertons.co.uk
 02030408622
 chestertons.co.uk

Additional tenant charges apply (fees apply to non-AST tenancies only)
 Tenancy Agreement Fee: £300
 References per Tenant/Guarantor: £60
 Inventory check (approx. £100 – £250 inc. VAT)
 chestertons.co.uk/property-to-rent/applicable-fees

Templar Court,
St. John's Wood Road, NW8



Approx Gross Internal Area 1610 Sq Ft - 149.57 Sq M

For Illustration Purposes Only - Not To Scale
www.goldlens.co.uk
Produced for Chestertons
Ref. No. 027520M