



Connaught Place, W2

£86,666 Per week

Dexters



Connaught Place, W2

Short Let - This 6,135 sq. Ft four bedroom duplex is situated in a premier development directly next to Marble Arch. Combining the privacy of a townhouse with the security of a modern apartment, the property features its own private entrance and a high-quality finish throughout. The layout includes a formal reception and dining room that opens onto a large south-facing terrace overlooking Hyde Park.

Connaught Place lies in the heart of London, an area of classic colonnades and magnificent Georgian facades, overlooking the lush green expanse of Hyde Park and nestling between Connaught Square and Marble Arch.

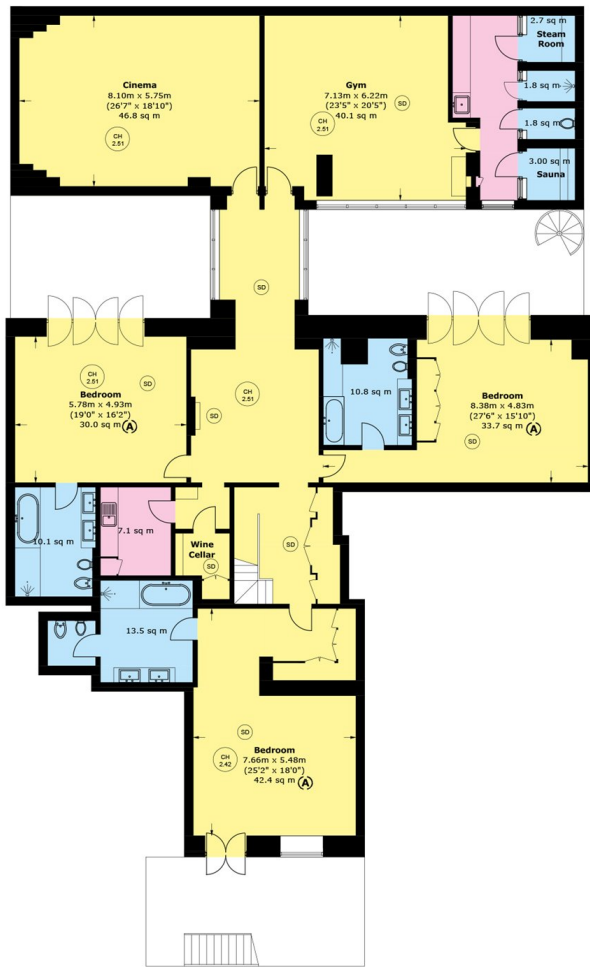
Features

- Four Luxury En Suite Bathrooms
- Bespoke Media Room and Gymnasium
- Internal Courtyards and External



Connaught Place, London, W2

SD Smoke Detector



Lower Ground Floor



Ground Floor

Total area (approx.): 569.9 sq. m (6,134.4 sq. ft)
(Excluding Void)

National Guidelines (may differ depending on Local Authority).

- E) 4.6 square meters > = no one
- D) 4.6 - 6.5 square meters = 1/2 person (Child up to 10 years)
- C) 6.5 - 8.4 square meters = 1 person
- B) 8.4 - 10.2 square meters = 1 1/2 people
- A) 10.2 square meters < = 2 people