

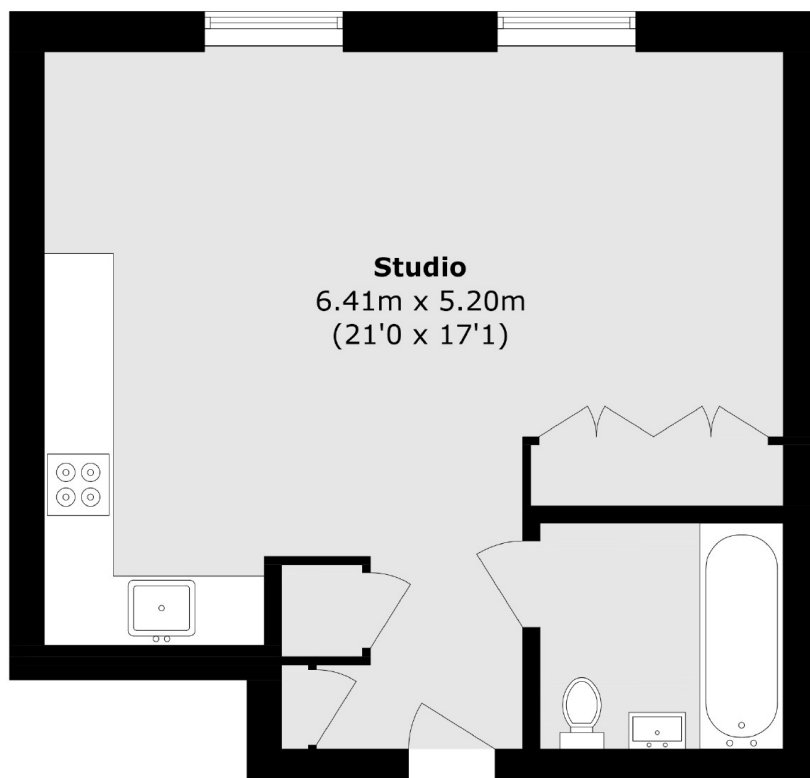


## CORSAIR HOUSE, E16

**£275,000**

**\*\*Offers Over\*\*** A spacious studio apartment located in Corsair House. This property offers a modern and bright living space, a kitchen with built in appliances, a contemporary bathroom, and several high end amenities included in the development.

- Studio Apartment
- Concierge
- Gym and Swimming Pool
- Lease 990 Years
- Ground Rent £360
- Service Charge £2,256



Total area (approx.): 37.2 sq. m (400.4 sq. ft)

**LiFE RESIDENTIAL**

36 Millharbour, London, E14

9JS

Sales: 020 3668 1033

Lettings: 020 3668 1030

Energy Rating: B. We aim to make our particulars both accurate and reliable. However they are not guaranteed; nor do they form part of an offer or contract. If you require clarification on any points then please contact us, especially if you're traveling some distance to view. Please note that appliances and heating systems have not been tested and therefore no warranties can be given as to their good working order.