



1 Highfield View

Tamerton Foliot, Plymouth, PL5 4BY

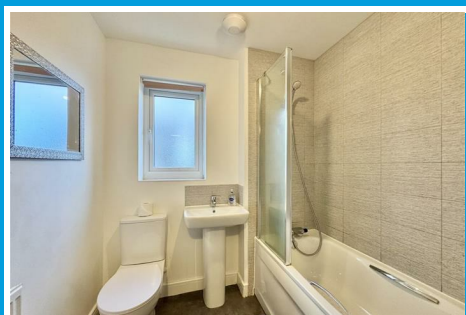
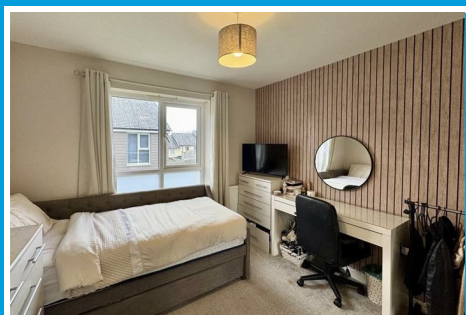
£450,000



1 Highfield View

Tamerton Foliot, Plymouth, PL5 4BY

£450,000



HIGHFIELD VIEW, TAMERTON FOLIOT, PLYMOUTH, PL5 4BY

SUMMARY

Built by Taylor Wimpey Homes in December 2019 & having the remaining part (4 years) of the NHBC warranty. Centrally heated & double-glazed. Porch & spacious reception hall. Useful downstairs cloakroom/wc, generous-sized triple aspect lounge with door to the rear garden. Fitted integrated kitchen/dining room, useful utility room with boiler. Four double bedrooms, master bedroom with en-suite & family bathroom/wc. A front garden & good-sized enclosed rear garden.

LOCATION

Found on the Northern fringe of Tamerton Foliot in this popular village with an excellent range of local services & amenities including shops, a choice of public houses, takeaway outlets, bus service & popular primary school. With convenient access into the city.

ACCOMMODATION

GROUND FLOOR

HALL

14'9 maximum x 6'7 maximum (4.50m maximum x 2.01m maximum)

LOUNGE

19'9 x 11'4 (6.02m x 3.45m)

KITCHEN/DINING ROOM

19'8 x 11'8 maximum (5.99m x 3.56m maximum)

UTILITY ROOM

6'6 x 4'7 (1.98m x 1.40m)

WC

5'3 x 2'10 (1.60m x 0.86m)

FIRST FLOOR

LANDING

MASTER BEDROOM

11'7 x 11'2 maximum (3.53m x 3.40m maximum)

EN-SUITE SHOWER ROOM

6'5 x 4'9 (1.96m x 1.45m)

BEDROOM TWO

11'11 x 9'10 (3.63m x 3.00m)

BEDROOM THREE

10' x 9'8 (3.05m x 2.95m)

BEDROOM FOUR

10'2 x 8'4 maximum (3.10m x 2.54m maximum)

BATHROOM

6'7 x 6'3 (2.01m x 1.91m)

EXTERNALLY

DOUBLE GARAGE

24'3 x 19'8 (7.39m x 5.99m)

Power points & lighting.

DOUBLE WIDTH DRIVE

25' x 19'8 wide (7.62m x 5.99m wide)

Potential for four vehicles.

FRONT GARDEN

GOOD-SIZED ENCLOSED REAR GARDEN

Patio & lawn.

MANAGEMENT CHARGE

To be confirmed.

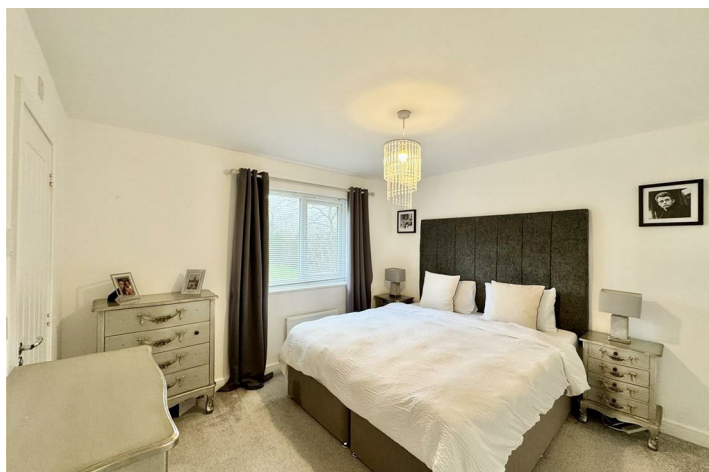
COUNCIL TAX

Plymouth City Council

Council Tax Band: E

SERVICES PLYMOUTH

The property is connected to all the mains services: gas, electricity, water and drainage.



Road Map



Hybrid Map

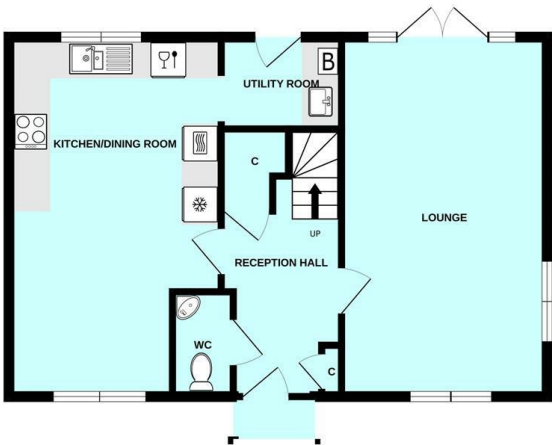


Terrain Map

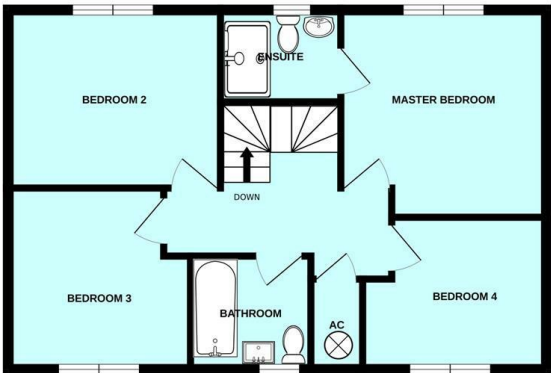


Floor Plan

GROUND FLOOR



1ST FLOOR

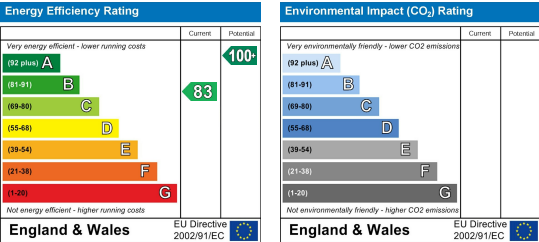


Made with Metropix ©2025

Viewing

Please contact our Plymouth Office on 01752 664125 if you wish to arrange a viewing appointment for this property or require further information.

Energy Efficiency Graph



These particulars, whilst believed to be accurate are set out as a general outline only for guidance and do not constitute any part of an offer or contract. Intending purchasers should not rely on them as statements of representation of fact, but must satisfy themselves by inspection or otherwise as to their accuracy. No person in this firms employment has the authority to make or give any representation or warranty in respect of the property.