



Waterline House, Merchant Square East, W2

£3,750 pcm

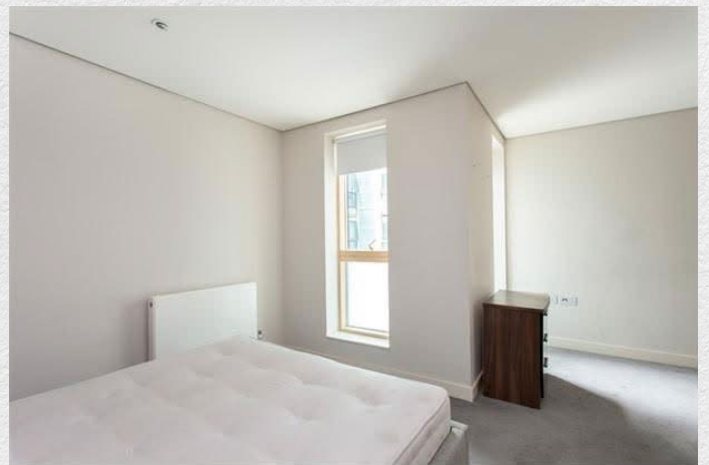
- 2nd floor apartment
- Two Bedrooms
- Two Bathrooms
- 775 sq ft
- Bright open plan reception space
- Fully integrated kitchen
- Utility room
- Comfort cooling and underfloor heating
- 24 hour concierge
- Excellent transport links

This exceptional second-floor apartment is situated within the highly anticipated and prestigious newest residential development in London's vibrant Paddington Basin district.

Showcasing flawless internal space planning throughout, this stylish property comprises a luxurious principal bedroom complete with a private en-suite shower room, a second generously sized double bedroom, and an elegant family bathroom. The bright, expansive reception room seamlessly flows into a dedicated dining area and a contemporary open-plan kitchen, which comes fully equipped with premium fitted appliances and high-quality bespoke finishes.

Built to an elite modern specification, the home features comfortable underfloor heating and integrated air conditioning for year-round climate control. Residents benefit from professional 24-hour concierge services, ensuring around-the-clock security and personal assistance, alongside comprehensive new-build structural warranties and advanced energy-efficient building systems.

Perfectly positioned for effortless daily commuting, the Paddington Basin offers truly exceptional transport connectivity. The premium property provides rapid, direct access to the Heathrow Express, extensive London Underground networks, and the high-speed Elizabeth Line from nearby Paddington Station.





ONE LONDON

PROPERTY

*Waterline House,
Merchant Square, W2*

SIZE

775 sq ft

Two bedrooms / Two bathrooms

CONTACT

*0207 856 0396
info@one-london.uk
www.one-london.uk*



*** For illustration purposes only. Could not be to scale.
One-London aims to ensure accuracy but is not liable
for any discrepancies.*

M201