



Victoria Road, Oundle
£650,000 Freehold

**Sharman
Quinney**

Key Features



- Immaculate condition
- Double garage and driveway
- All interior doors have been recently replaced
- Very large rear garden
- Sought after location

Set within one of Oundle's most desirable residential locations, this beautifully maintained four bedroom detached home offers generous living space, modern finishes and an impressive garden rarely found in properties of this type. The home is presented in immaculate condition throughout. The bright and spacious lounge features two front facing windows that allow natural light to pour in, along with double French doors leading into the dining room - a layout that creates a superb flow for both everyday living and entertaining.



The well appointed kitchen includes a breakfast bar and a window overlooking the expansive rear garden, making it a lovely spot to enjoy morning light. Beyond the kitchen sits a good sized utility room, offering valuable additional storage and practicality.

Upstairs, all four bedrooms benefit from built in wardrobes, providing excellent storage solutions. The master bedroom enjoys its own en suite shower room, while the family bathroom features a stylish four piece suite.

The rear garden is a standout feature - very large, private and beautifully arranged. A patio area offers the perfect space for outdoor dining, with the remainder laid to lawn and framed by mature borders that add colour and character throughout the seasons.

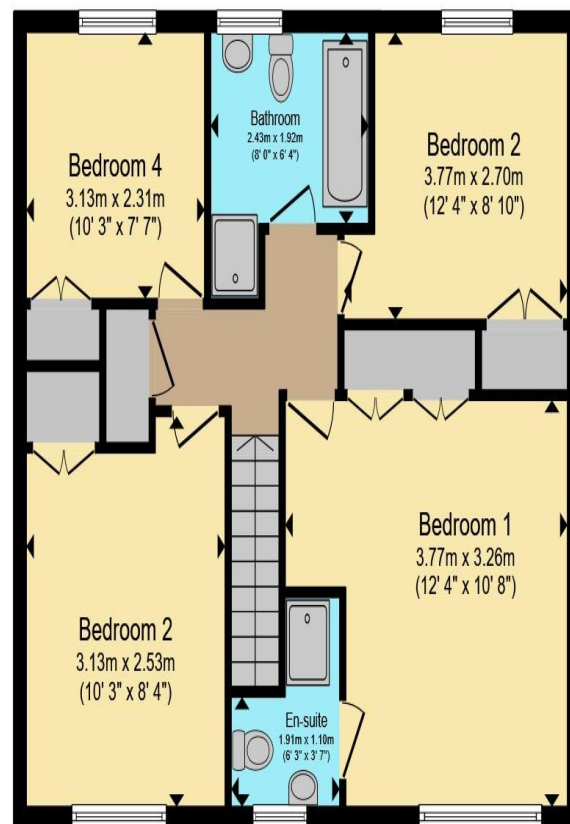
The property also benefits from an integrated double garage and a driveway, providing ample parking and secure storage. Recently installed internal doors throughout the home add a fresh, updated feel.

This is a superb opportunity to secure a spacious, immaculate family home in one of Oundle's most sought after areas - offering exceptional outdoor space, modern comfort and a layout designed for easy living.





Ground Floor



First Floor

Total floor area 137.3 m² (1,478 sq.ft.) approx

This floor plan is for illustrative purposes only. It is not drawn to scale. Any measurements, floor areas (including any total floor area), openings and orientation are approximate. No details are guaranteed, they cannot be relied upon for any purpose and they do not form part of any agreement. No liability is taken for any error, omission or misstatement. A party must rely upon its own inspection(s). Powered by www.propertybox.io

**Sharman
Quinney**

To view this property call Sharman Quinney on:
01832 274567

Selling your property?

Contact us to arrange a **FREE** home valuation.

 01832 274567

 The Old Town Hall Market Place, Oundle, Peterborough, Cambridgeshire, PE8 4BQ

 oundle@sharmanquinney.co.uk

 www.sharmanquinney.co.uk



 SCAN ME



Sharman Quinney Holdings Limited is registered in England and Wales under company number 4174227, Registered Office is Cumbria House, 16-20 Hockliffe Street, Leighton Buzzard, Bedfordshire, LU7 1GN. VAT Registration Number is 500 2481 05.

1: These particulars do not constitute part or all of an offer or contract. 2: The measurements indicated are supplied for guidance only and as such must be considered incorrect. 3: Potential buyers are advised to recheck the measurements before committing to any expense. 4: Sharman Quinney has not tested any apparatus, equipment, fixtures, fittings or services and it is the buyers interests to check the working condition of any appliances. 5: Sharman Quinney has not sought to verify the legal title of the property and buyers must obtain verification from their legal representative. 6: Intending purchasers will be asked to produce identification documentation at a later stage and we would ask your co-operation in order that there will be no delay in agreeing the sale. Ref: OUN201467 - 0001

