



Mauritius Road, SE10

£807 Per week

Mid Terraced house on quiet residential street, features 4 bedrooms or option for to convert a bedroom into second reception or work from home office, open plan living space all spread over 940 sq ft and a private garden. Ideal for growing family or can accommodate sharers,

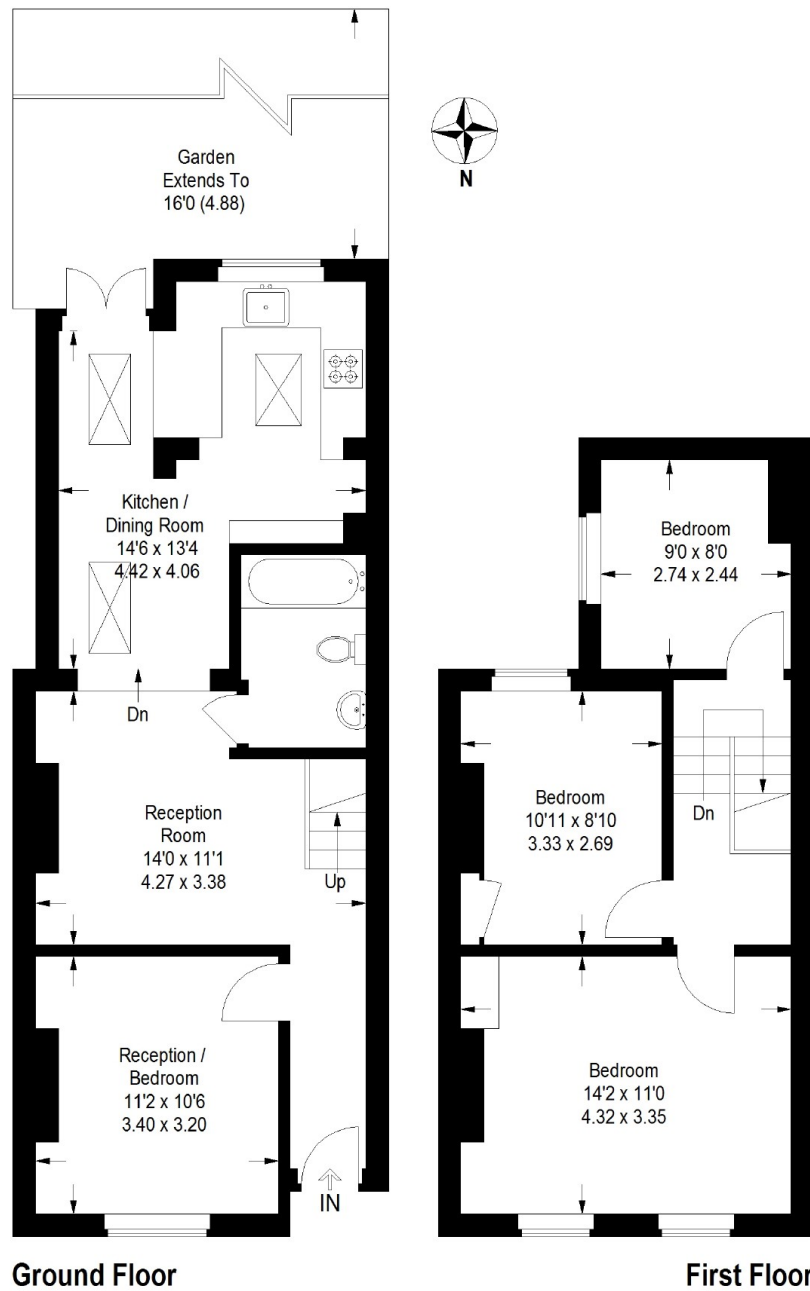
Mauritius Road is ideally located 0.7 miles from Maze Hill Railway station and just over a mile from North Greenwich Stations. The beautiful open spaces of Greenwich Park are close by as are the bars, restaurants and tourist attractions that Greenwich has to offer.

Features

Mid Terraced House
Four Bedrooms
Ideal for Sharers
Private Garden
Close to Station
Close to North Greenwich

Mauritius Road, London, SE10

Mauritius Road



Approximate Gross Internal Area
949 sq ft / 88.2 sq m

Illustration for identification purposes only,
measurements are approximate.
Drawn for Sebastian Roche.