



Shakspeare Walk, N16

£600,000

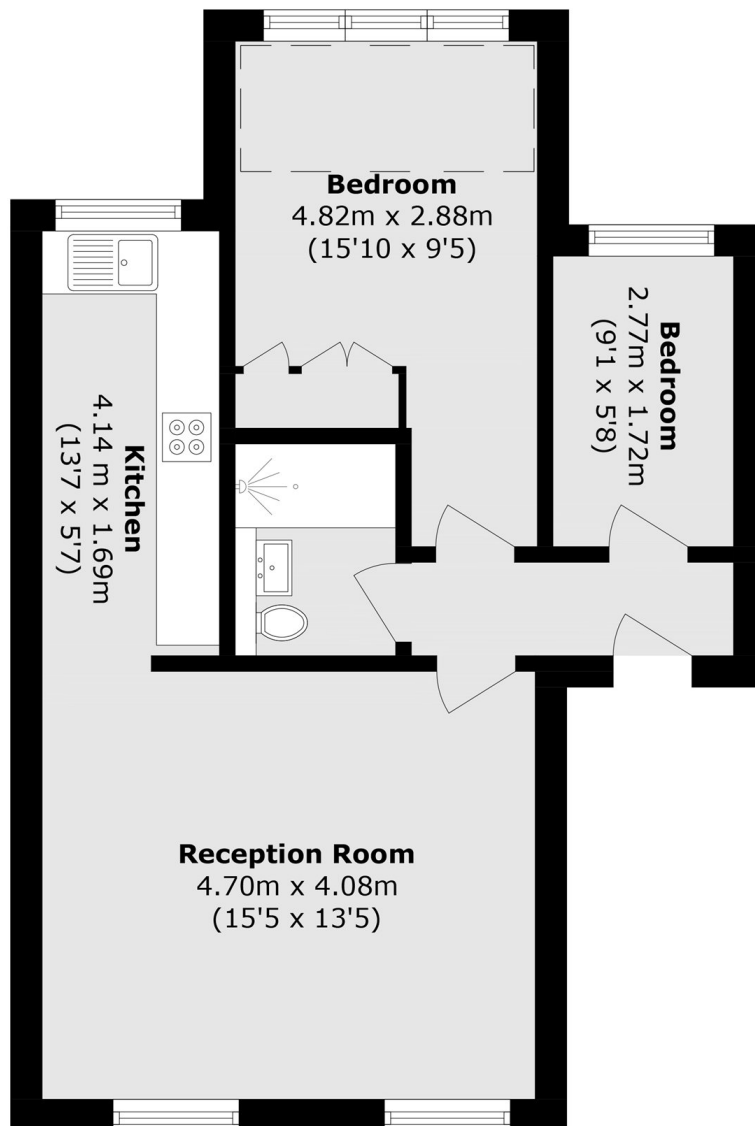
A two-bedroom first-floor apartment in a Victorian conversion in Stoke Newington. Well presented throughout, the home features a semi open-plan kitchen and living area with large sash windows, along with a generous main bedroom with fitted storage. The second bedroom is currently used as a home office and could also serve as a single or guest room.

Ideally located in between Clissold Park, Newington Green and Stoke Newington Church Street this flat benefits from the plethora of restaurants, cafés & boutique shops that the area has to offer. Being within a mile of Canonbury Overground station and having multiple bus routes close by means that there are numerous ways to get to the City, the West End and beyond.

Features

- Share of Freehold
- Two Bedrooms
- First Floor
- Period Conversion
- Chain Free

Shakspeare Walk, London, N16



Total area (approx.): 51.3 sq. m (552.2 sq. ft)