



Plot 4 Milestone Close | Waverton | Wigton | CA7 0AE

Guide Price £595,000



**david britton**  
ESTATES



## Key Features

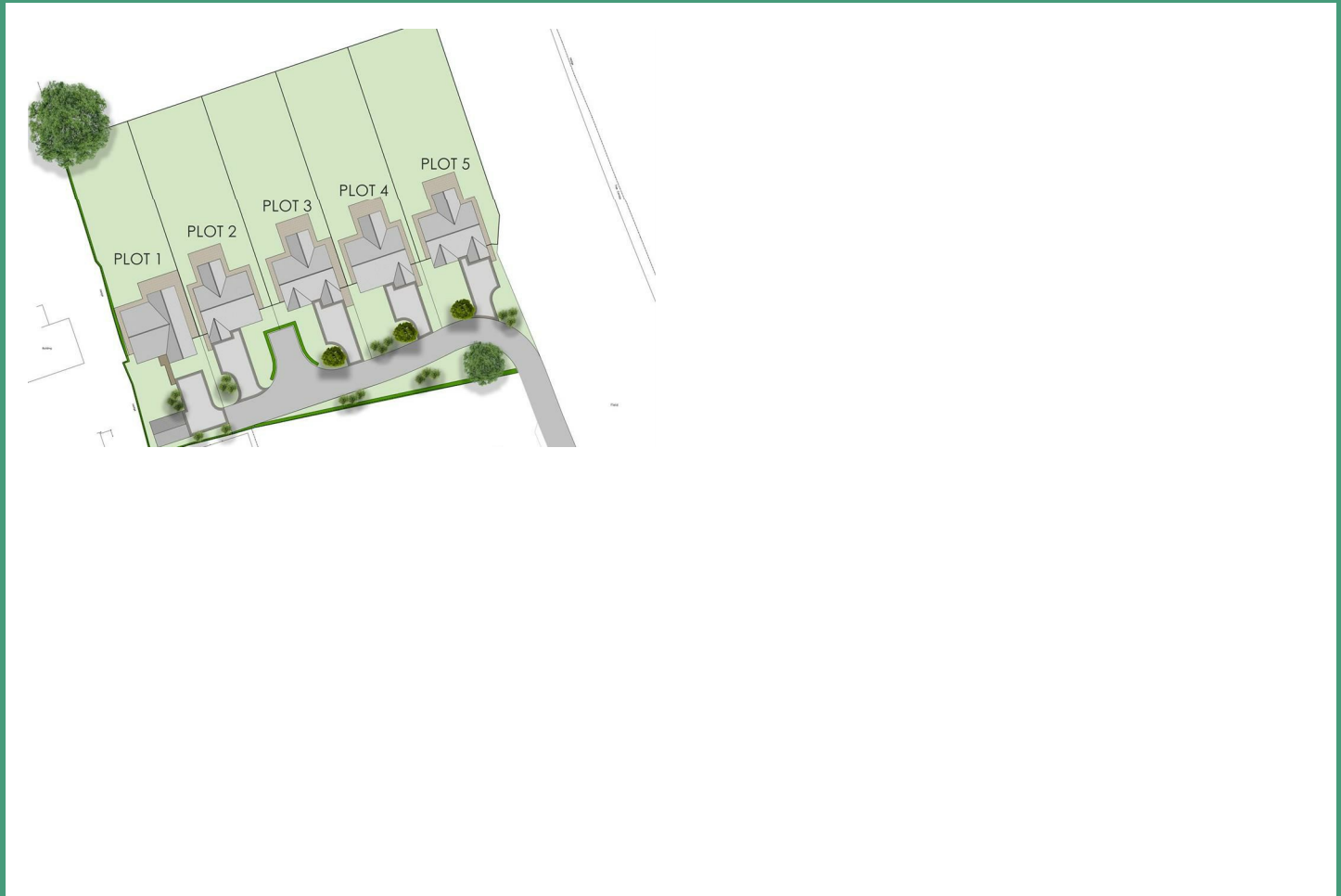
- Luxury New build Home
- Built by locally renowned Lattimer Homes
- 4 bedroom detached home
- Around 2000 sq ft of living accommodation
- Luxurious Specification
- Stunning views to the rear
- Gardens to front and rear
- Integral Garage
- Driveway parking
- Close to Wigton, Carlisle, Lake District and Solway Coast

## Summary

PHASE TWO - MILESTONE CLOSE – BRAND NEW BUILD FOUR BEDROOM DETACHED HOME WITH LUXURY, QUALITY FINISH & ATTENTION TO DETAIL BUILT BY LATTIMER HOMES!

**\*\*Viewings strictly by appointment only\*\***



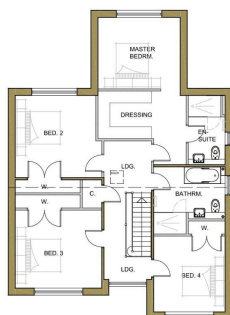


## Floor plans



GF PLAN  
83.79m<sup>2</sup> G.I.A.  
garage @ 19.25m<sup>2</sup>

TOTAL G.I.A. 103.04m<sup>2</sup>  
(2007 sq. ft. plus garage)



FF PLAN  
102.68m<sup>2</sup> G.I.A.



COUNCIL TAX BAND - AllerdaleNew Build

### DISCLAIMER

These particulars, whilst believed to be accurate are set out as a general guideline and do not constitute any part of an offer or contract. Intending Purchasers should not rely on them as statements of representation of fact but must satisfy themselves by inspection or otherwise as to their accuracy. The services, systems, and appliances shown may not have been tested and has no guarantee as to their operability or efficiency can be given. All floor plans are created as a guide to the lay out of the property and should not be considered as a true depiction of any property and constitutes no part of a legal contract.



Unit 3 Mason Court Gillan Way, Penrith 40 Business Park

Penrith

Cumbria

CA11 9GR

01768881111

[Sales@brittonestates.co.uk](mailto:Sales@brittonestates.co.uk)

[www.brittonestates.co.uk](http://www.brittonestates.co.uk)