



Guide Price

£500,000

Freehold

5x  2x  4x 

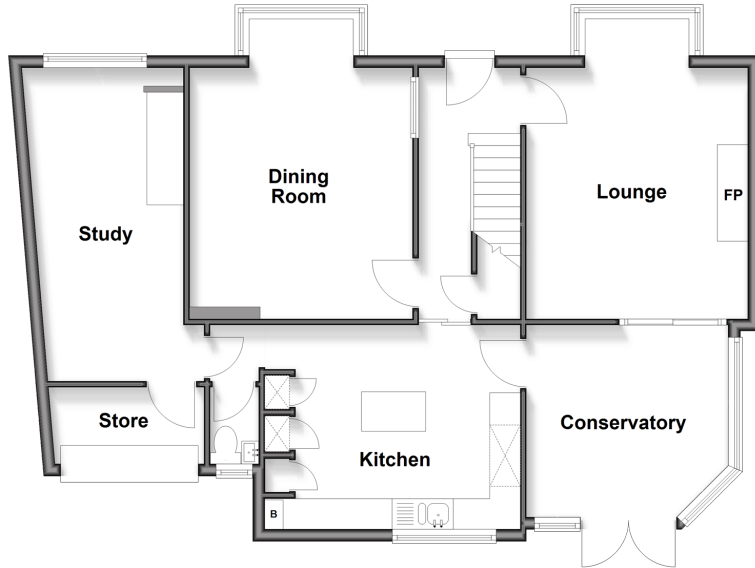
**Sandwich Road,
Whitfield, Dover, Kent,
CT16**

OVER 60?

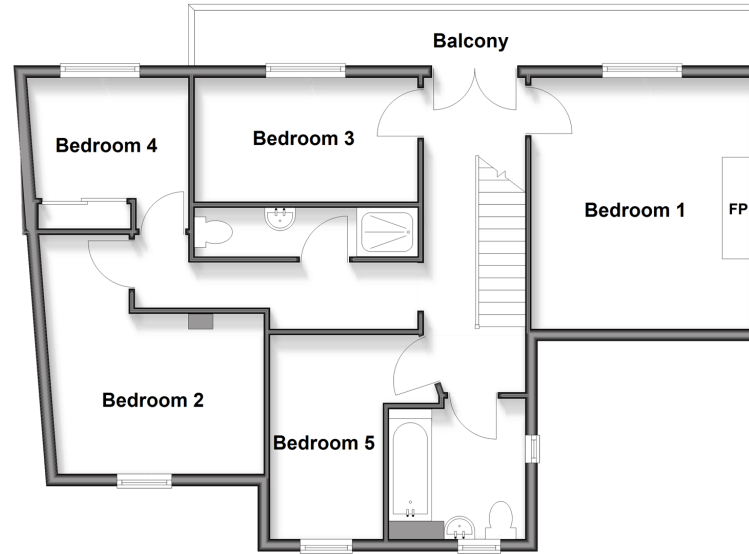
Secure this property
for up to **59% less!**

Wards
Helping you move forwards

Ground Floor
Approx. 82.2 sq. metres (885.2 sq. feet)



First Floor
Approx. 71.0 sq. metres (764.3 sq. feet)



Outbuilding
Approx. 18.3 sq. metres (196.6 sq. feet)



Accommodation

GROUND FLOOR

Entrance Hallway
Kitchen: 13'7 x 10'3 (4.14m x 3.13m)
Downstairs Cloakroom
Study: 15'3 x 7'8 (4.65m x 2.34m)
Dining Room: 16'2 x 11'9 (4.93m x 3.58m)
Lounge: 15'8 x 11'8 (4.78m x 3.56m)
Conservatory : 11'5 x 10'11 (3.48m x 3.33m)

FIRST FLOOR

Landing
Balcony
Bedroom 1: 12'9 x 12'0 (3.89m x 3.66m)
Bedroom 3: 12'1 x 6'6 (3.69m x 1.98m)
Bathroom: 7'7 x 7'3 (2.31m x 2.21m)
Bedroom 4: 9'2 x 6'2 (2.80m x 1.88m)
Shower Room
Bedroom 2: 11'9 x 8'2 (3.58m x 2.49m)
Bedroom 5: 9'1 x 6'1 (2.77m x 1.86m)

OUTBUILDING

Garage (Used as Workshop)

OUTSIDE

Car Port
Off-Road Parking
Front and Rear Gardens
Cabin



Main features

- Well-proportioned bedrooms
- Stylish Wren kitchen featuring a central island
- Flexible living areas, including a double-glazed conservatory, adaptable dining space, and a converted garage perfect for a home office
- Beautiful rear garden with lawn, shed, bike store, and a fully equipped entertainment cabin
- Extensive off-street parking with a large driveway

Nearest Schools

Primary Schools: Whitfield and Aspen School 0.5 miles, Temple Ewell C of E Primary 1.3 miles, Green Park Community Primary 1.4 miles
Secondary Schools: Dover Christchurch Academy 1.1 miles, St Edmund's Catholic School 2.1 miles.

Transport Information

Train Stations: Kearsney 1.3 miles, Martin Mill 2.6 miles, Dover Priory 2.8 miles

Address

Sandwich Road, Whitfield, Dover, Kent, CT16

Directions

For directions to this property please contact us.



Wards
Helping you move forwards

Call Dover Branch 01304 214876 ■ wardsof Kent.co.uk



- Legal advice should be taken to verify fixtures/fittings, planning, alterations and/or lease details
- Appliances & services are untested, dimensions are approximate and floor plans are not to scale
- Through a Homewise Home For Life Plan people aged 60+ can secure this property for up to 50% less, by purchasing a Lifetime Lease.



EPIC RATING
CURRENT: C(71) POTENTIAL: C(80)

10734844/20251017/TE/OV