



Cedarcroft Road, Ipswich, IP1 6BQ

welcome to

Cedarcroft Road, Ipswich

This beautiful, extended, semi-detached home benefits from three bedrooms, a kitchen/diner, a utility space, a ground floor cloakroom, a 1st floor cloakroom with separate bathroom, a stunning rear garden, a garage and off street parking. NO ONWARD CHAIN!

Entrance Hall

Wood effect flooring, one radiator and double glazed window to the side.

Lounge

Wood effect flooring, TV point, double glazed bay window to the front, a fireplace with space for a log burner and double doors to the kitchen/diner.

Kitchen/Diner

Tiled flooring, under floor heating, spot lights, fitted shelving and cupboards, one radiator, French doors to the garden, two Velux sky light windows, space for a table and chairs, a one and a half bowl sink plus drainer and chrome mixer tap, eye and base level units in cream with marble effect worktop surfaces, double glazed window to the rear, brick effect splashback, space for an American fridge/freezer, an integrated oven, a gas hob and extractor hood.

Utility Space

Tiled effect flooring and space for a fridge/freezer, microwave oven, washing machine, dishwasher and tumble dryer.

Ground Floor Cloakroom

Tiled effect flooring, double glazed window to the side, low level WC, spotlights and wash hand basin.

First Floor Landing

Carpet flooring, loft hatch and double glazed window to the side.

Master Bedroom

Wood effect flooring, a built in storage cupboard, double glazed window to front and one radiator.

Bedroom Two

Carpet flooring, a full wall of built in, sliding wardrobes, double glazed window to the rear and one radiator.

Bedroom Three

Carpet flooring, double glazed window to the front and one radiator.

First Floor Cloakroom

Dark oak wood effect flooring, low level WC and double glazed window to the side.

Bathroom

Dark oak wood effect flooring, double glazed windows to the side and rear, one radiator, wash hand basin, fully tiled walls and a bath with overhead shower and glass screen.

Outside:

Front Garden

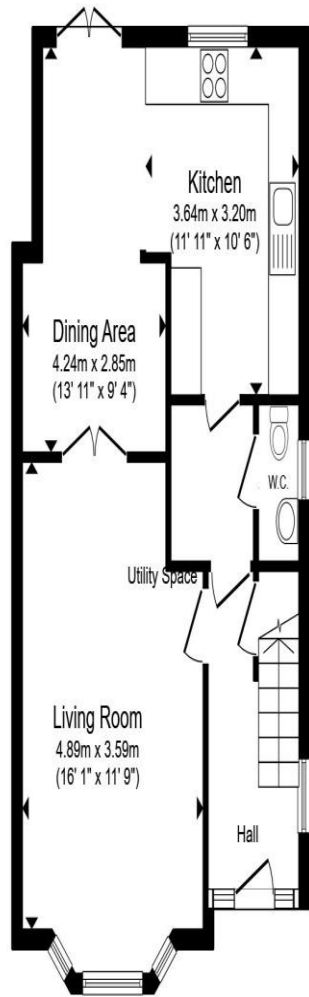
A shared, block paved driveway, a partially walled border, shrubs and shared access to the garage.

Rear Garden

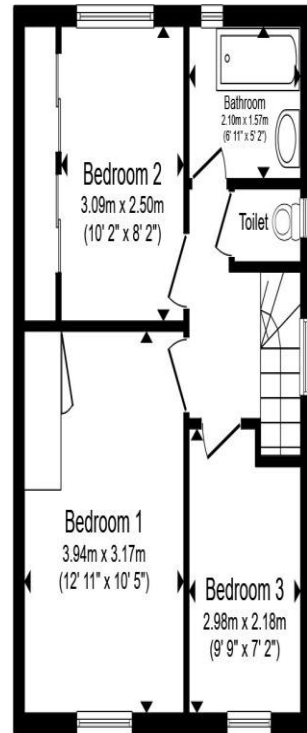
Stunning rear garden with a decked seating area with canopy over, a further covered, decked seating area with wood store, shrubs, flower beds, fully enclosed border, a grassed area, a stoned seating area, a side access and a door to the garage.

Garage

An up and over door and power.



Ground Floor



First Floor

Total floor area 89.3 m² (962 sq.ft.) approx

This floor plan is for illustrative purposes only. It is not drawn to scale. Any measurements, floor areas (including any total floor area), openings and orientation are approximate. No details are guaranteed, they cannot be relied upon for any purpose and they do not form part of any agreement. No liability is taken for any error, omission or misstatement. A party must rely upon its own inspection(s). Powered by www.propertybox.io



welcome to
Cedarcroft Road,
Ipswich

- No onward chain
- Extended three bedroom home
- Beautiful kitchen/diner
- Ground floor cloakroom, 1st floor cloakroom & separate bathroom
- Garage & off street parking

Tenure: Freehold EPC Rating: C
Council Tax Band: B

guide price

£300,000 – £325,000



view this property online williamhbrown.co.uk/Property/IPS121527



Property Ref:
IPS121527 - 0003

1. MONEY LAUNDERING REGULATIONS Intending purchasers will be asked to produce identification documentation at a later stage and we would ask for your co-operation in order that there is no delay in agreeing the sale. 2. These particulars do not constitute part or all of an offer or contract. 3. The measurements indicated are supplied for guidance only and as such must be considered incorrect. Potential buyers are advised to recheck measurements before committing to any expense. 4. We have not tested any apparatus, equipment, fixtures or services and it is in the buyers interest to check the working condition of any appliances. 5. Where an EPC, or a Home Report (Scotland only) is held for this property, it is available for inspection at the branch by appointment. If you require a printed version of a Home Report, you will need to pay a reasonable production charge reflecting printing and other costs. 6. We are not able to offer an opinion either written or verbal on the content of these reports and this must be obtained from your legal representative. 7. Whilst we take care in preparing these reports, a buyer should ensure that his/her legal representative confirms as soon as possible all matters relating to title including the extent and boundaries of the property and other important matters before exchange of contracts.

William H Brown is a trading name of Sequence (UK) Limited which is registered in England and Wales under company number 4268443, Registered Office is Cumbria House, 16-20 Hockliffe Street, Leighton Buzzard, Bedfordshire, LU7 1GN. VAT Registration Number is 500 2481 05.



william h brown



01473 226101



ipswich@williamhbrown.co.uk



16-18 Wolsey House, Princes Street, IPSWICH,
Suffolk, IP1 1QT



williamhbrown.co.uk