

Location:

Located just a one-minute walk from West Acton station, the property enjoys excellent transport links via the Central Line, providing direct access to Ealing Broadway, the West End and the City.

Key points:

- Two bedrooms
- First floor flat
- 672 sq ft / 62.6 sq m
- Newly converted in 2017
- Private rear garden
- Share of freehold
- No onward chain

Do Better:

Acton

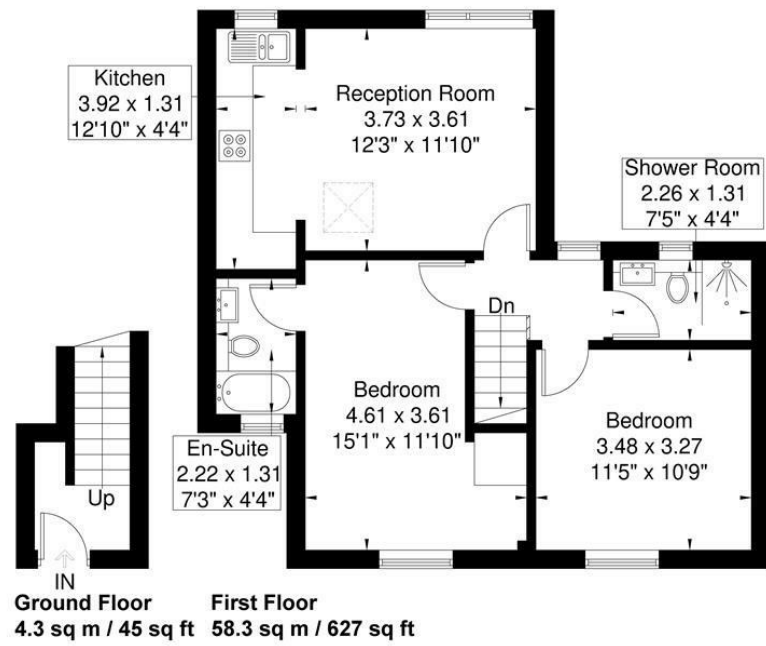
sales@astonrowe.co.uk

57-59 Churchfield Road,
Acton, London, W3 6AY

020 8992 3600



Noel Road
Approximate Gross Internal Area = 62.6 sq m / 672 sq ft



Although every attempt has been made to ensure accuracy, all measurements are approximate. The floorplan is for illustrative purposes only and not to scale. © www.perspective.co.uk

Energy Efficiency Rating		Environmental Impact (CO ₂) Rating	
Current	Potential	Current	Potential

England & Wales EU Directive 2002/91/EC

£450,000

Noel Road, London W3 0JL

- 1 Reception Rooms
- 2 Bedrooms
- 2 Bathrooms



A well presented two bedroom first floor flat located in West Acton.

Newly converted in 2017, the property offers two double bedrooms, two bathrooms (one en-suite) and a bright and spacious open-plan kitchen/living room.

The property also benefits from a private rear garden and is being sold with a share of the freehold and no onward chain.

Located just a one-minute walk from West Acton station, the property enjoys excellent transport links via the Central Line, providing direct access to Ealing Broadway, the West End and the City. Further connections are available from Acton Main Line station, offering fast Elizabeth Line services to Paddington, Bond Street, Tottenham Court Road and Canary Wharf, while Acton Town station provides Piccadilly Line and District Line routes to central London and Heathrow Airport.

The current owner says:

The property is in a fantastic location for the local shops, schools, parks and transport links.

What's better:

The property benefits from a private rear garden and is being sold with a share of the freehold and no onward chain.

