



## Bedford Hill, SW12

£595,000

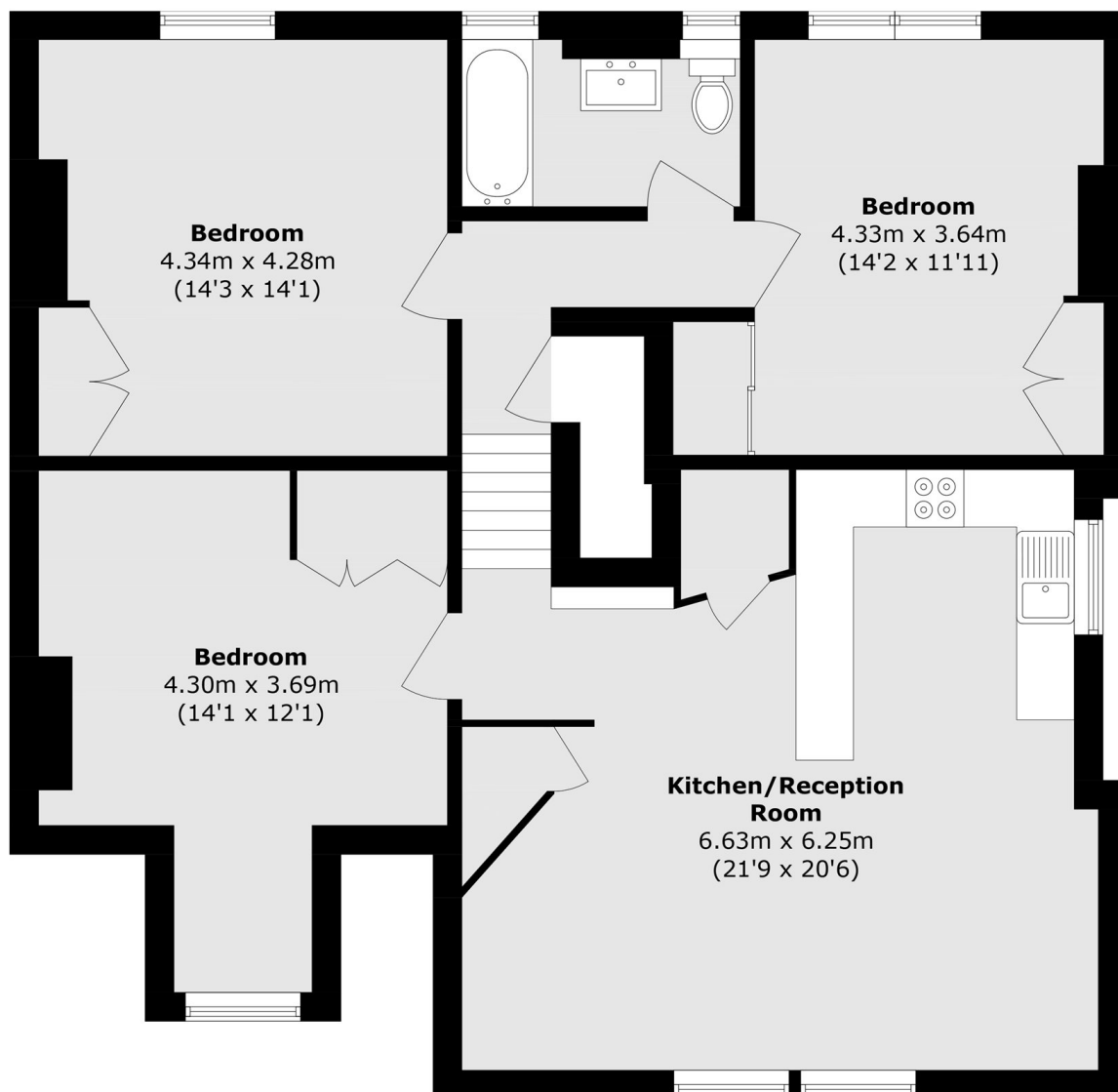
A really spacious conversion occupying the top floor of a stunning period property located on the fringes of the popular Heaver Estate moments from both Balham & Tooting Bec Common.

This property is located on Bedford Hill so ideal for easy access to Balham mainline and Underground stations, as well as the many popular shops, bars and restaurants the local area has to offer.

### Features

- Over 1000 sq ft
- Open Plan Reception
- Three Double Bedrooms
- Communal Garden
- Potential to Improve
- No Chain

# Bedford Hill, London, SW12



Total area (approx.): 93.1 sq. m (1002.1 sq. ft)