



MARYLEBONE ROAD, NW1

£1,050,000

Two double bedrooms
Gym
Porter
Two parking spaces
Share of freehold
Meticulously finished

@marshandparsons
marshandparsons.co.uk

MARSH &
PARSONS



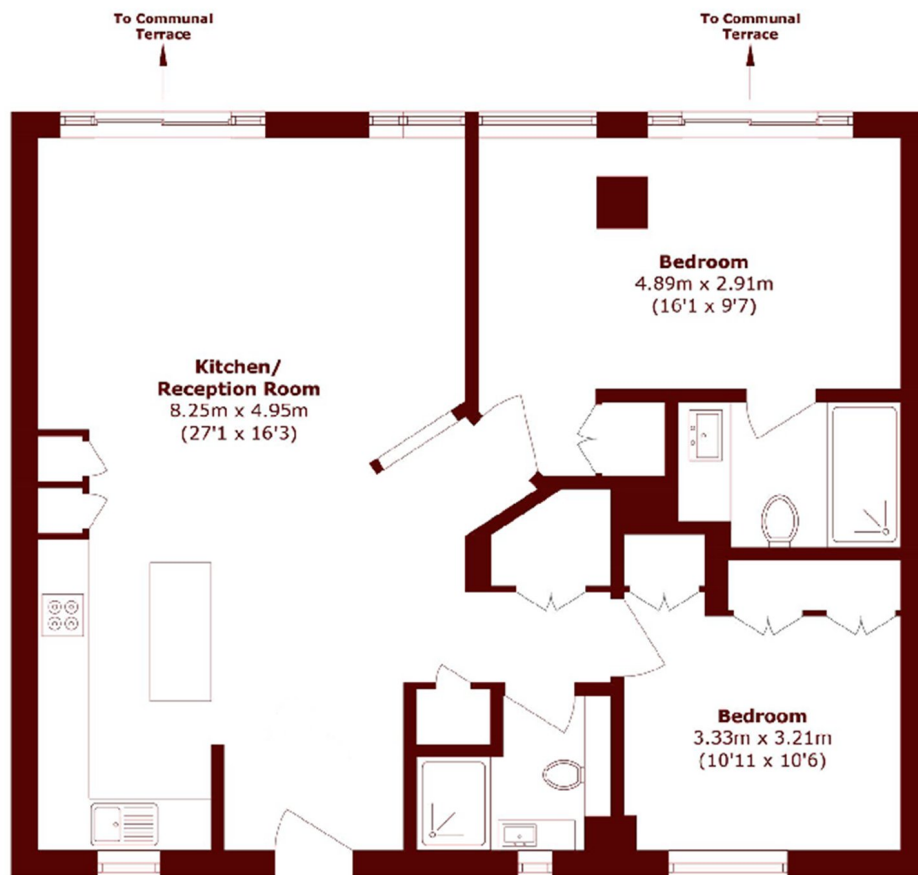
ABOUT THE PROPERTY

This beautifully redesigned two-bedroom, two-bathroom flat offers high-specification modern living throughout. Featuring impressive high ceilings and a bright open-plan layout, the south-facing reception room is filled with natural light. The property includes two well-proportioned bedrooms, two contemporary bathrooms, and benefits from a quiet setting. It also features air conditioning for added comfort, along with two allocated parking spaces

Marathon House is an incredibly popular portered development with onsite gym and within easy walking distance of both Marylebone Station (National Rail & Bakerloo Line, Zone 1) and Baker Street Tube Station.



STEP INSIDE MARYLEBONE ROAD



Second Floor

Total area (approx.): 82.4 sq. m (887.0 sq. ft)

Marylebone & Mayfair
020 7935 1775

Energy Rating: C We aim to make our particulars both accurate and reliable. However, they are not guaranteed; nor do they form part of an offer or contract. If you require clarification on any points then please contact us, especially if you're traveling some distance to view. Please note that appliances and heating systems have not been tested and therefore no warranties can be given as to their good working order

MARSH &
PARSONS