



43 Gemini Road, Sherford, Plymouth, PL9 8FL



## Guide Price £415,000



This impressive five-bedroom family home is set over three spacious floors, offering both flexibility and modern living. Situated in the sought-after area of Sherford, the property enjoys a prime position with beautiful views over the parkland, providing a peaceful and picturesque backdrop.

On the ground floor, you will find a spacious reception room currently used as the lounge, with ample natural light flooding through the windows. The stylish modern fitted kitchen/diner ideal for entertaining. The kitchen has a range of integrated appliances and a breakfast bar whilst doors provide access to the rear garden.

On the first floor there are three bedrooms and a family bathroom. On the second floor you have two spacious double bedrooms both of which have private en-suite bathrooms.

Outside, to the front of the property you have a small gated garden leading to the front entrance. To the rear there is a low maintenance garden ideal for outdoor living, with a BBQ seating area and artificial lawn. A gate provides access to the rear where you will find the garage and parking.

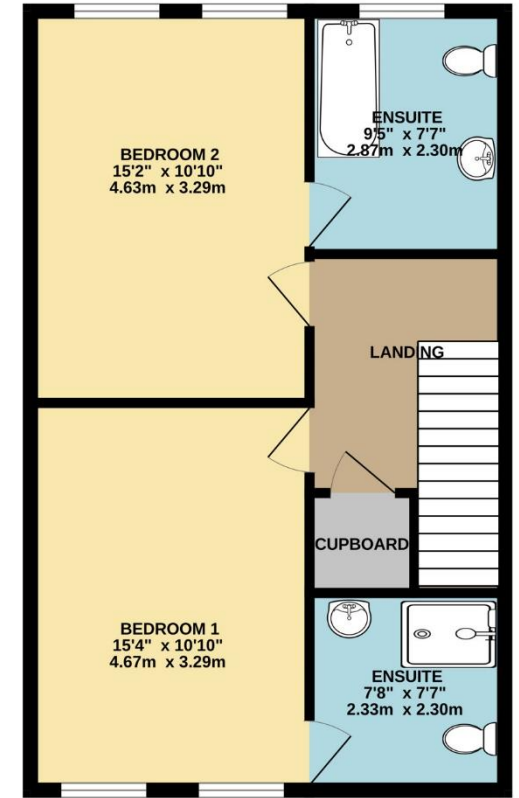
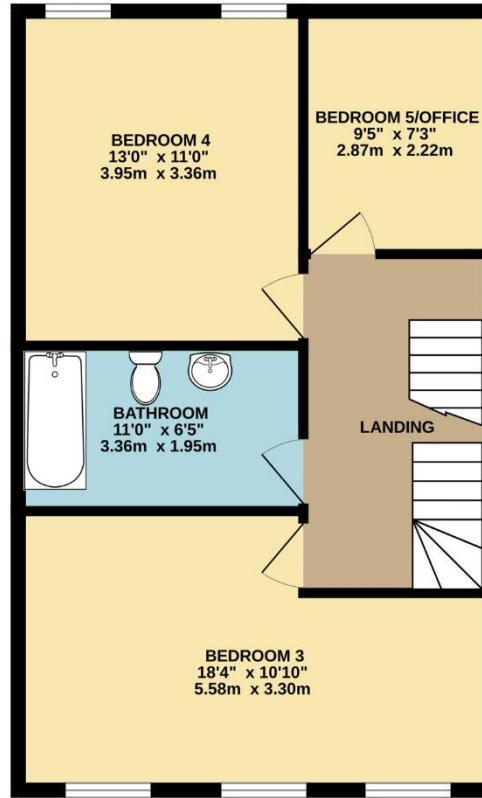
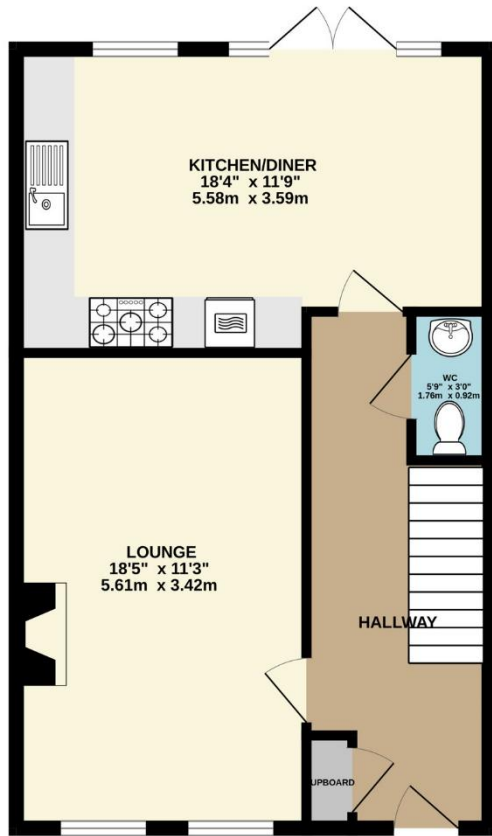
Perfectly located with excellent local amenities, schools, and transport links, this is the ideal family home offering comfort, space, and flexibility to suit a growing family.

The development is run by a management company the details of which should be confirmed by your solicitor. Management charges apply of approximately £235 per annum.



To view this property call Lang Town & Country Estate Agents on **01752 456000**.





TOTAL FLOOR AREA : 1659 sq.ft. (154.1 sq.m.) approx.  
Measurements are approximate. Not to scale. Illustrative purposes only  
Made with Metropix ©2025



Lang Town & Country  
6 The Broadway  
Plymstock  
Plymouth  
PL9 7AU  
Tel: 01752 456000  
Email: [plymstockoffice@langtownandcountry.com](mailto:plymstockoffice@langtownandcountry.com)

Lang Town & Country endeavour to ensure the accuracy of property details produced and displayed, we have not tested any apparatus, equipment, fixtures, fittings or services and so cannot verify that they are connected, in working order or fit for purpose. A buyer must check the availability of any property and make an appointment to view before embarking on any journey to see a property.

